

Telelogic Publishing Engine

Examples Guide

Release 1.0

Before using this information, be sure to read the general information under Appendix, [“Notices” on page 53.](#)

This edition applies to **VERSION 1.0, Telelogic Publishing Engine** and to all subsequent releases and modifications until otherwise indicated in new editions.

© **Copyright IBM Corporation 2008**

US Government Users Restricted Rights—Use, duplication or disclosure restricted by GSA ADP Schedule Contract with IBM Corp.

Table of contents

Telelogic Publishing Engine	1
Examples	1
A template for DOORS data	1
Basic setup	1
Advanced template options	12
More advanced settings	23
Generate the document.	25
A template for Tau data	30
Define the template content	34
Generate the document.	48
Appendix A: Notices	53
Trademarks	56



Telelogic Publishing Engine

Examples

A template for DOORS data

Basic setup

Create a new Document Template

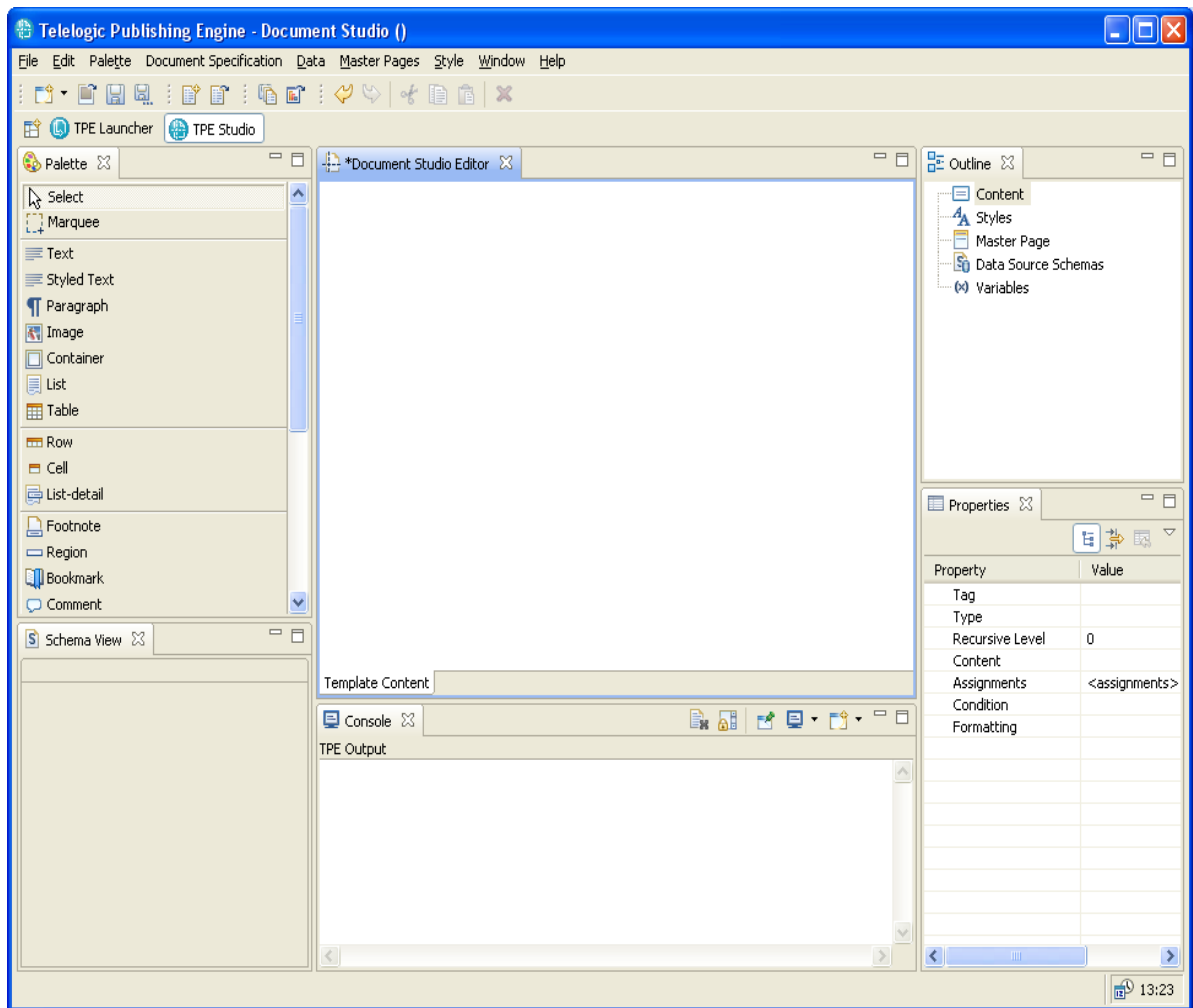


Figure 1

Add a data source schema using the Add Data Source Wizard

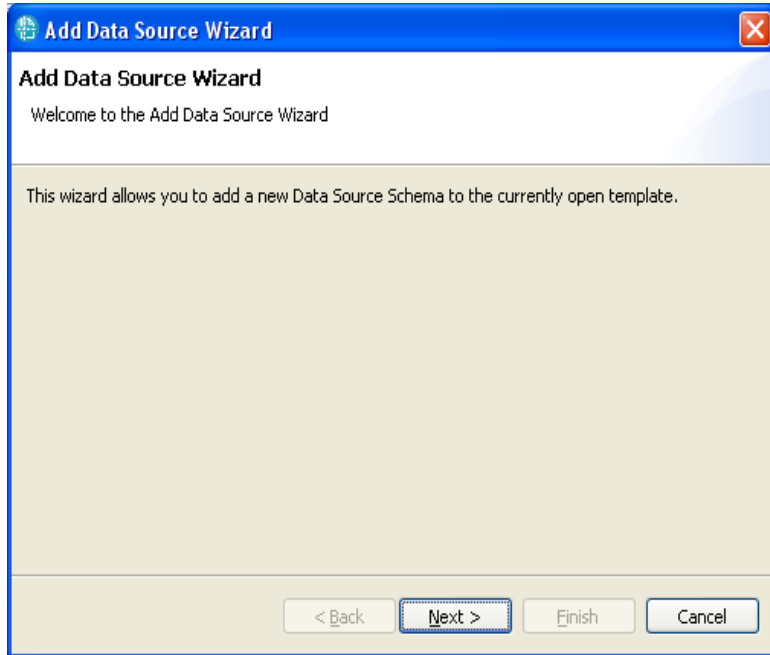


Figure 2

Select the schema provided in the TPE installation

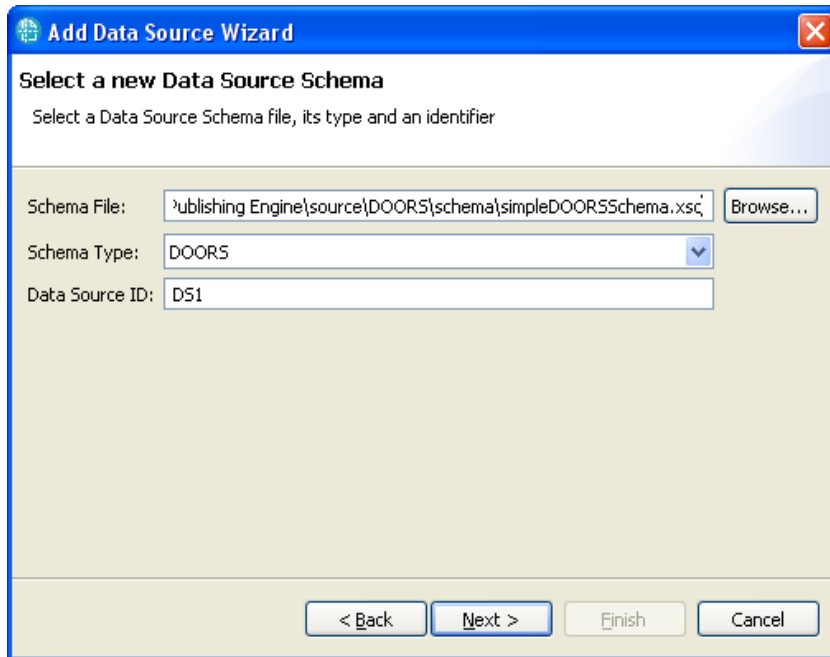


Figure 3

Review selection

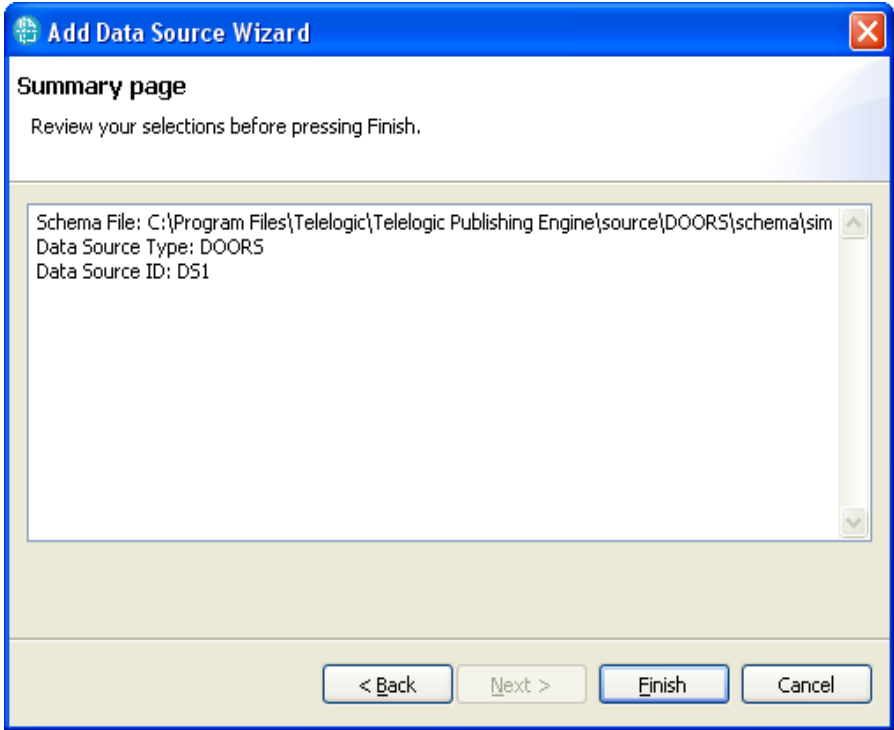


Figure 4

Add a **container** element in the template

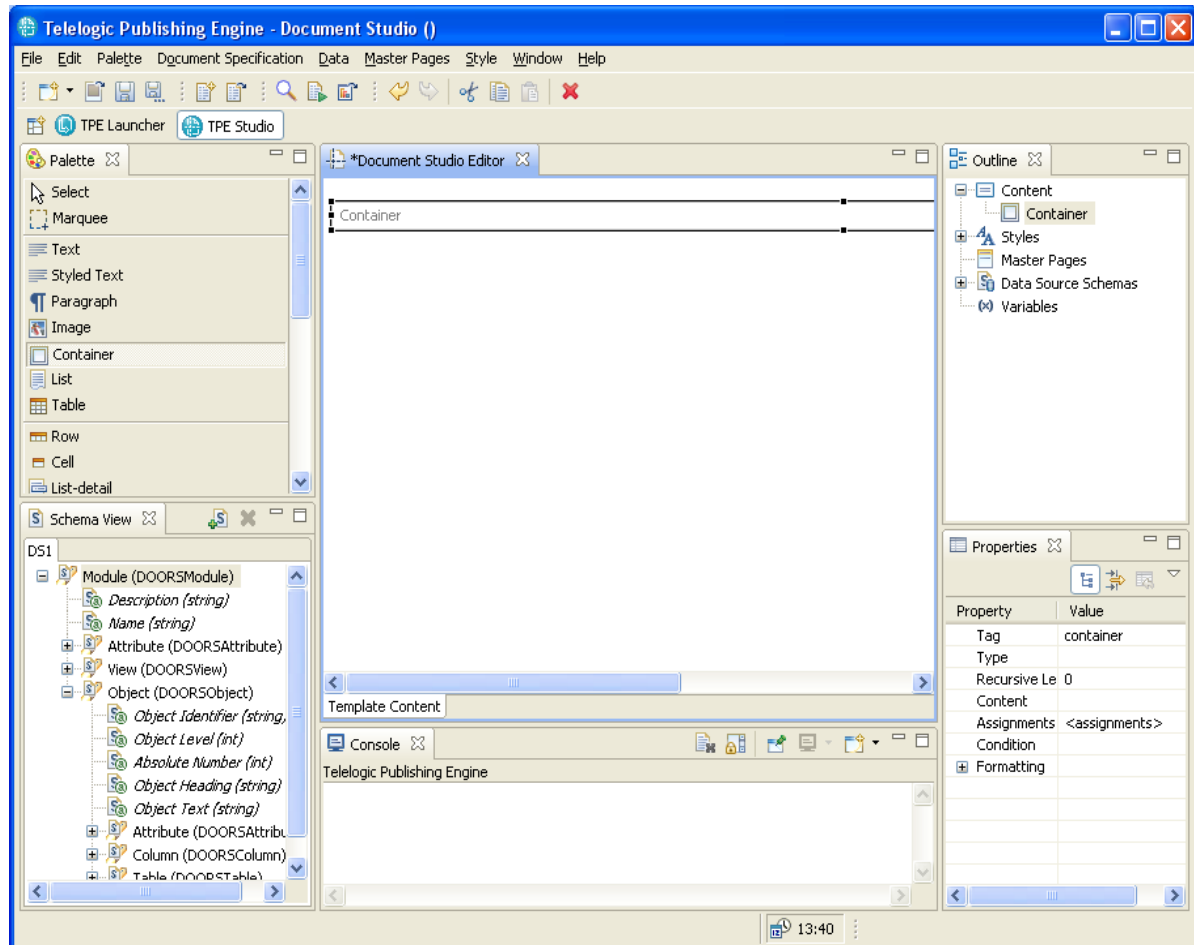


Figure 5

Assign a query to the element

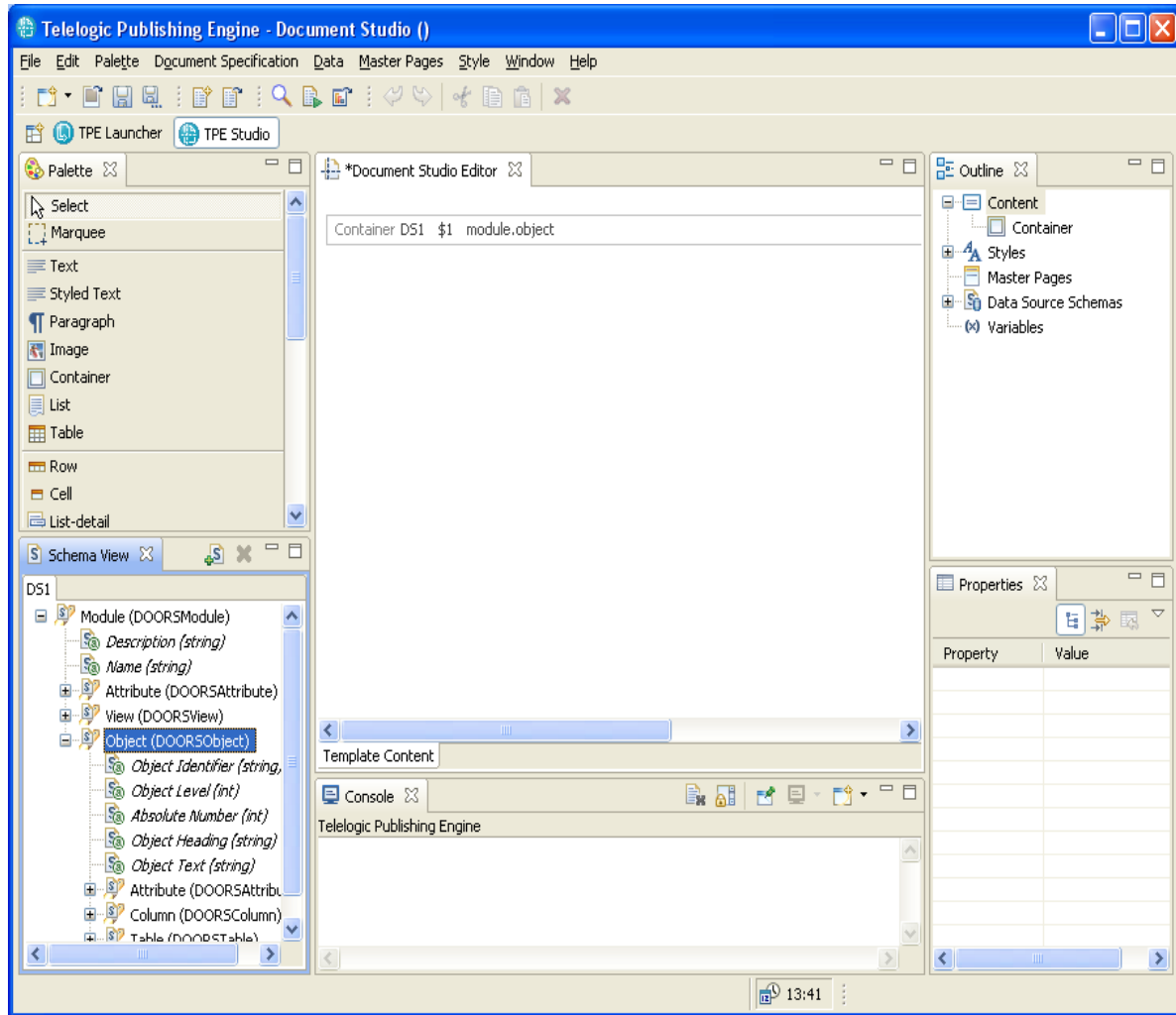


Figure 6

Add the “Object Heading” attribute

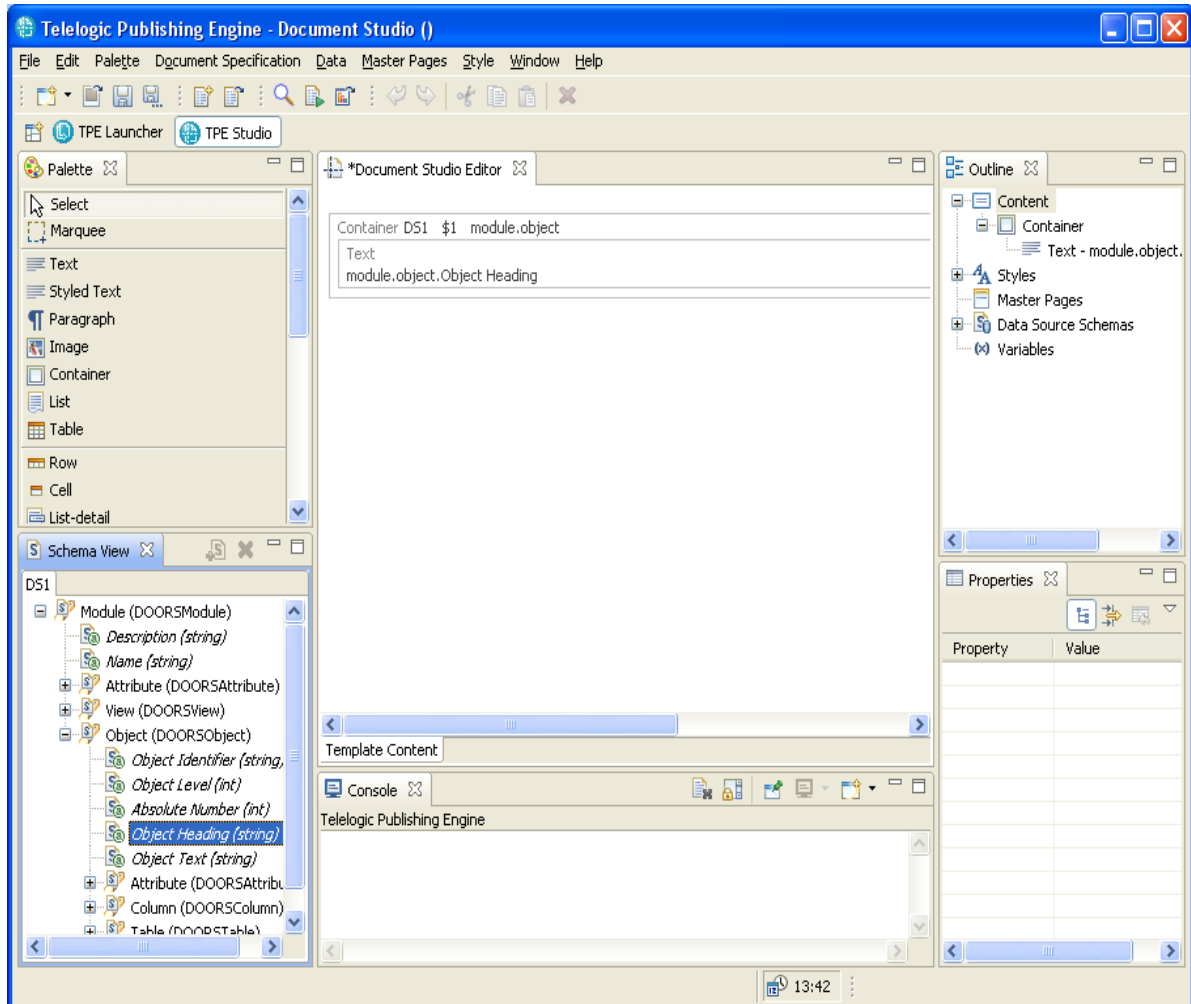


Figure 7

Apply a Condition to the display of the element

The text element containing the object heading should be processed only if the Object Heading is not empty.

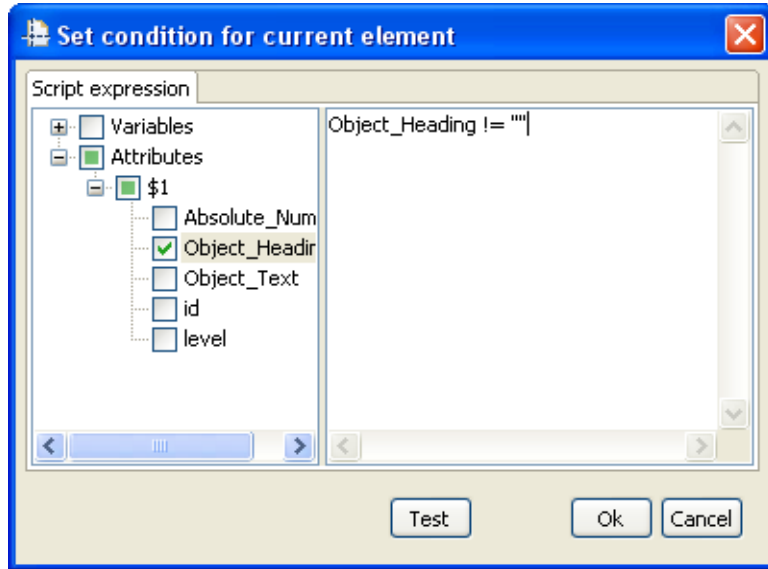


Figure 8

Add the Object text

The Object Text is added in its own paragraph to avoid collating multiple object texts on the same line.

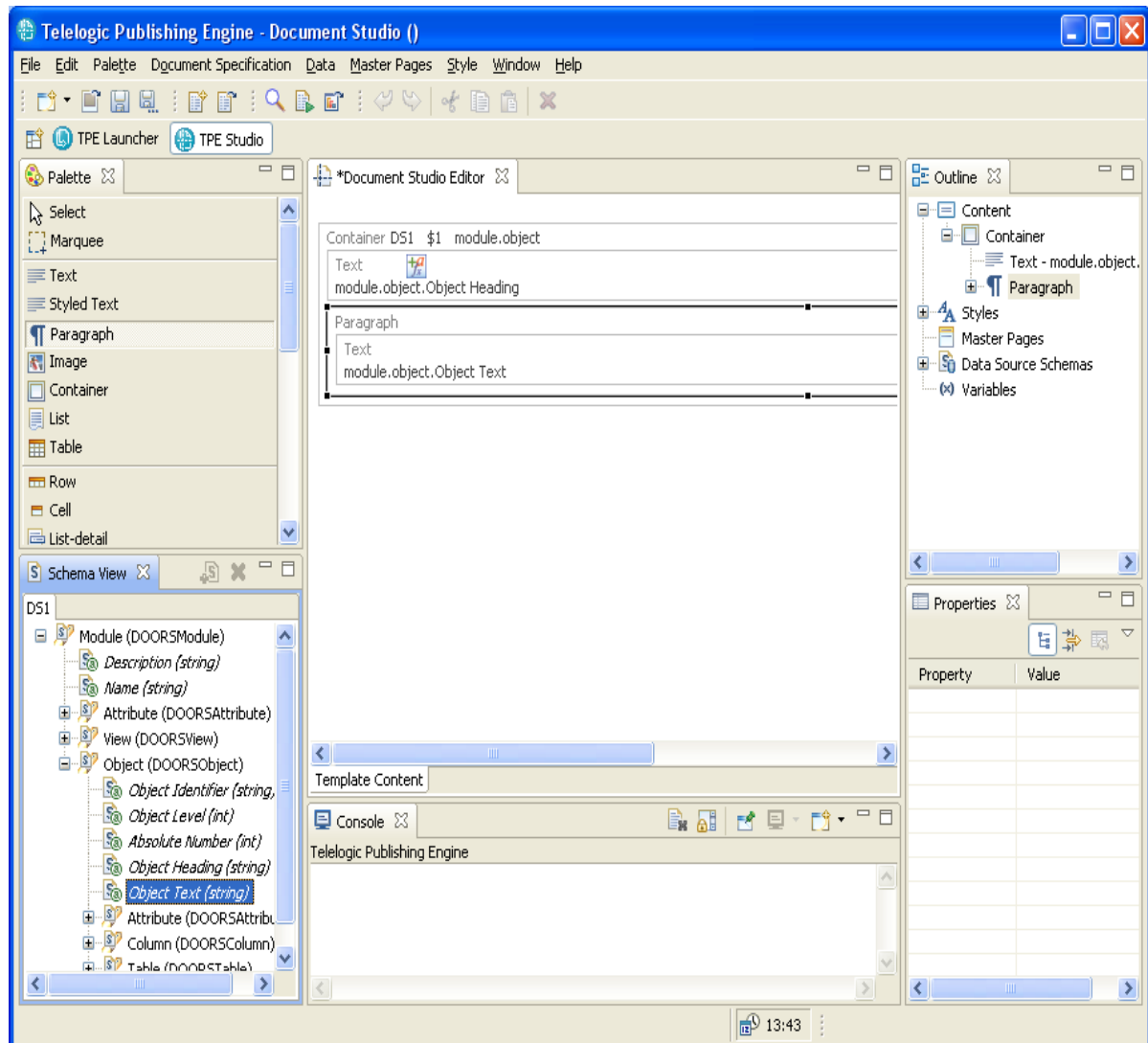


Figure 9

Condition the display of Object Text

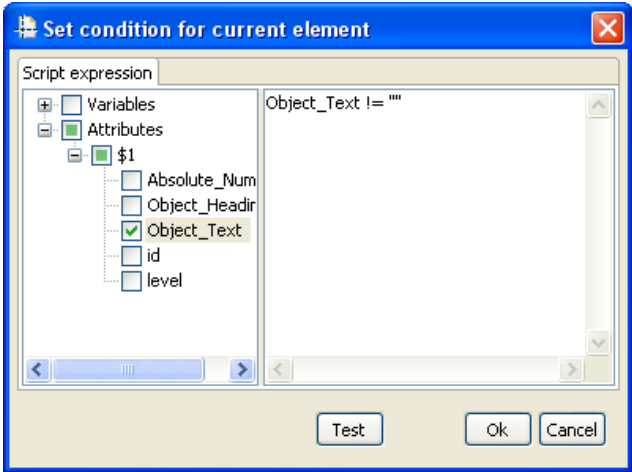


Figure 10

Save the template.

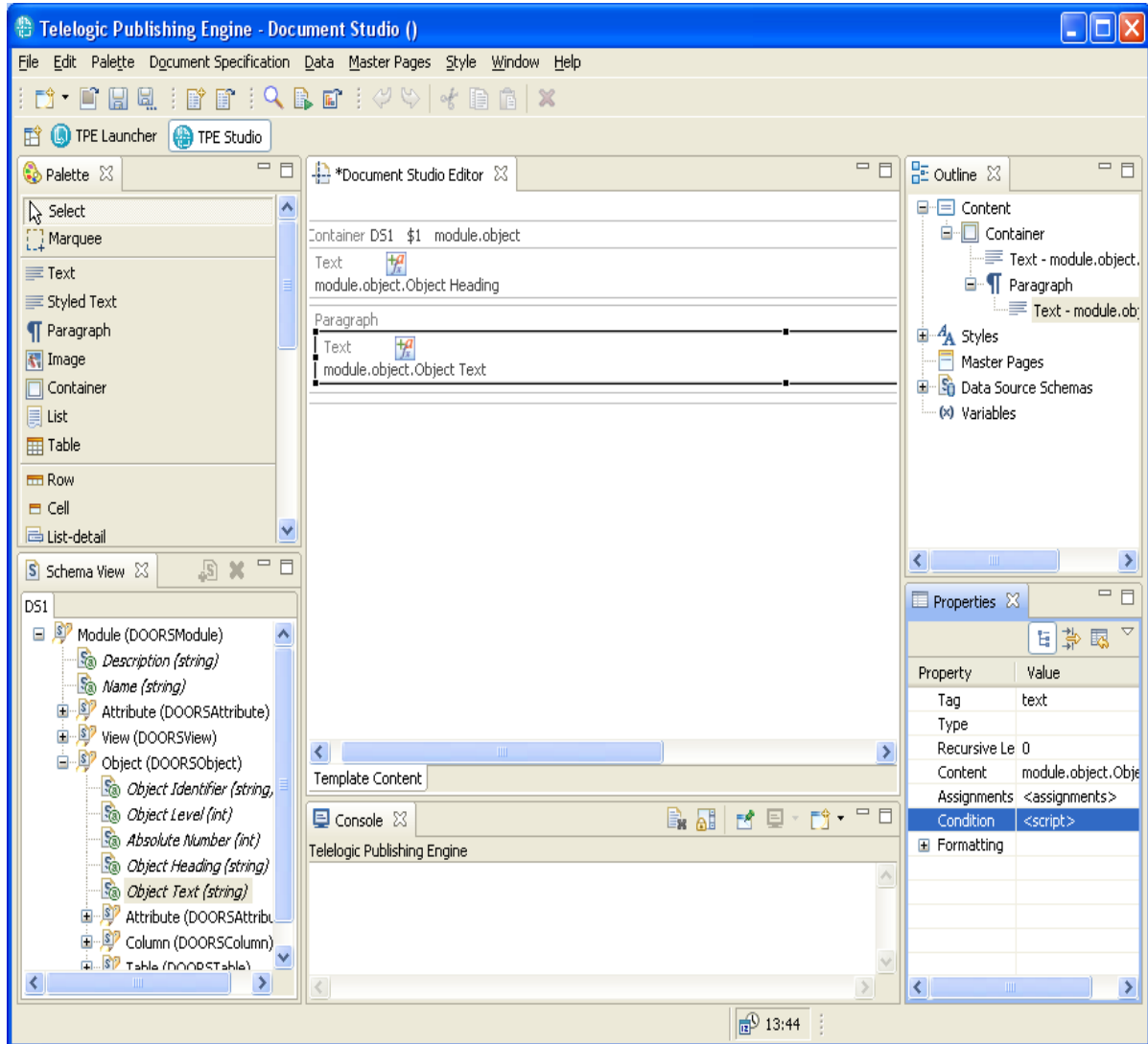


Figure 11

Advanced template options

Add a Table of contents

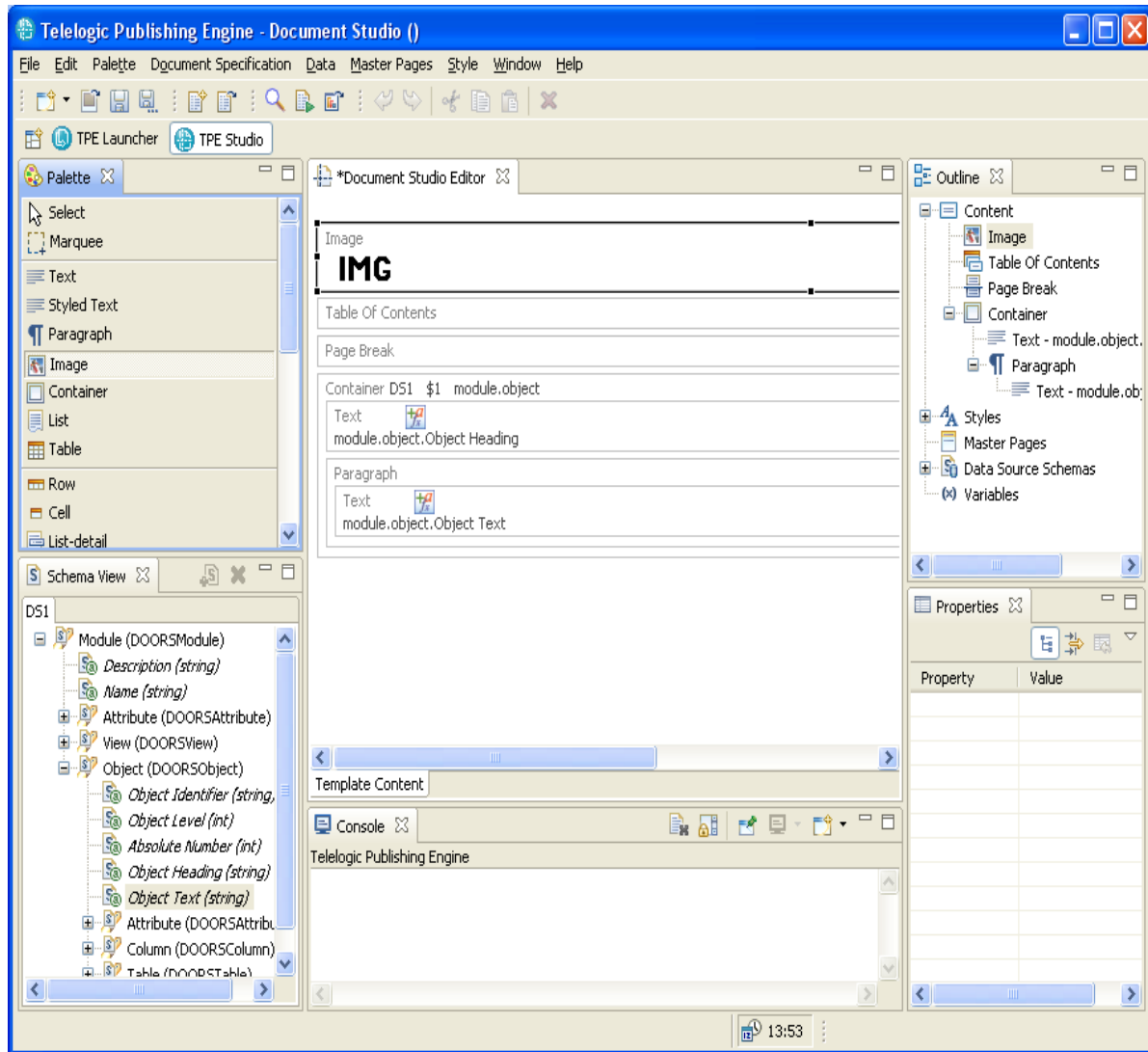


Figure 12

Add an image at the top of the document

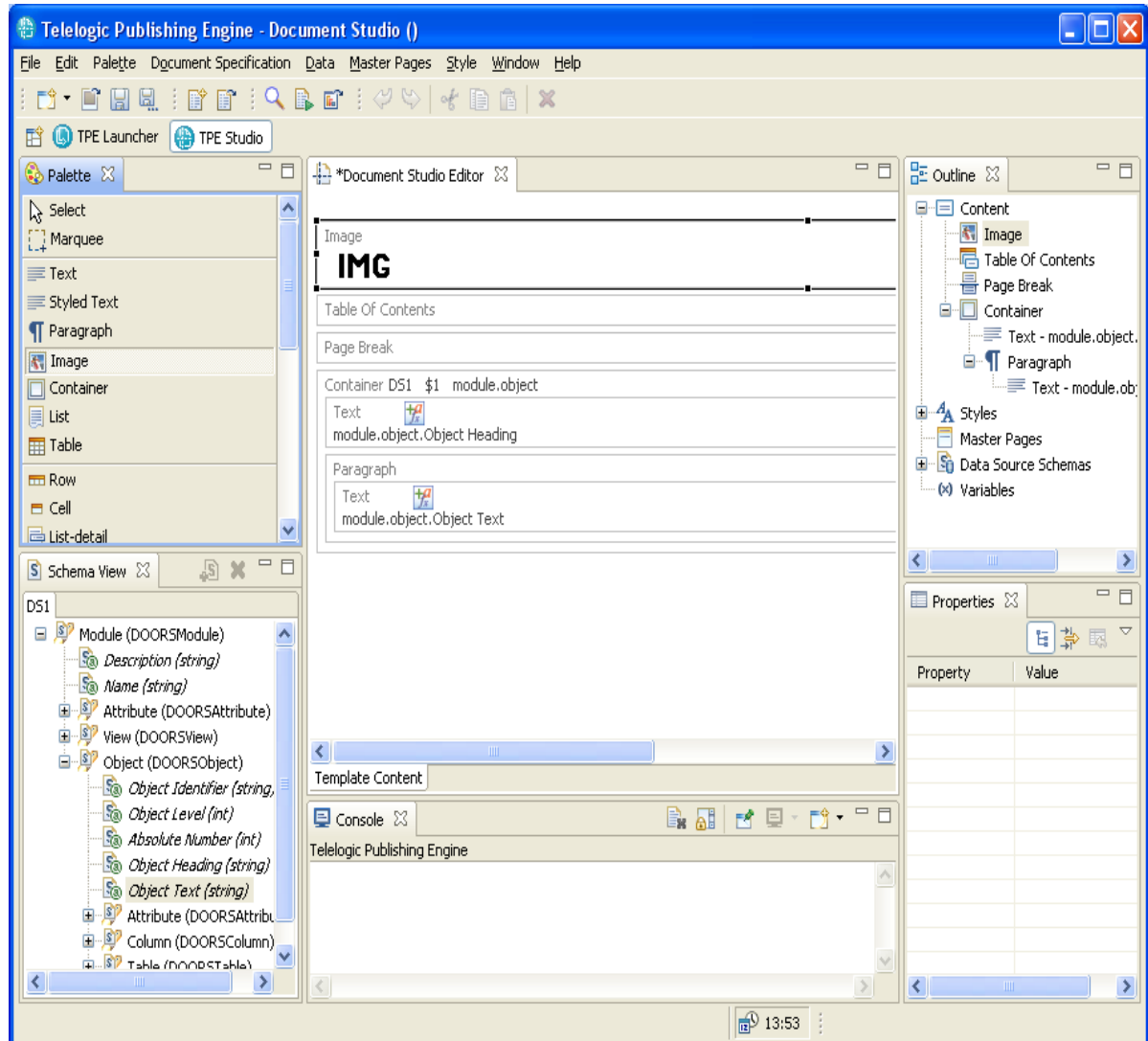


Figure 13

Load an image from the file system

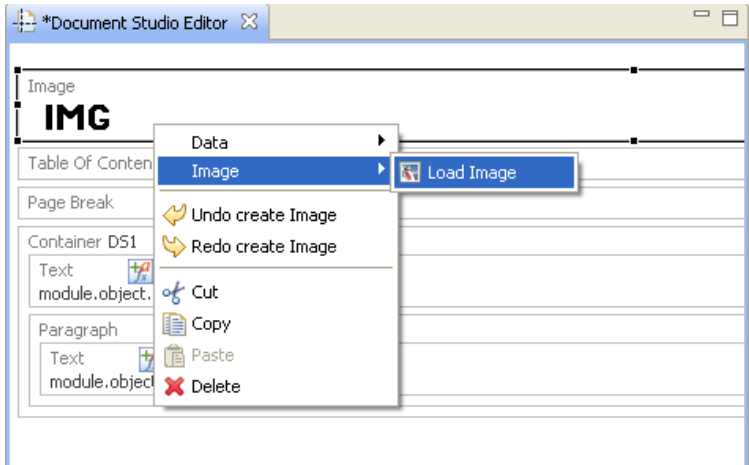


Figure 14

NOTE The selected image is copied in the template.

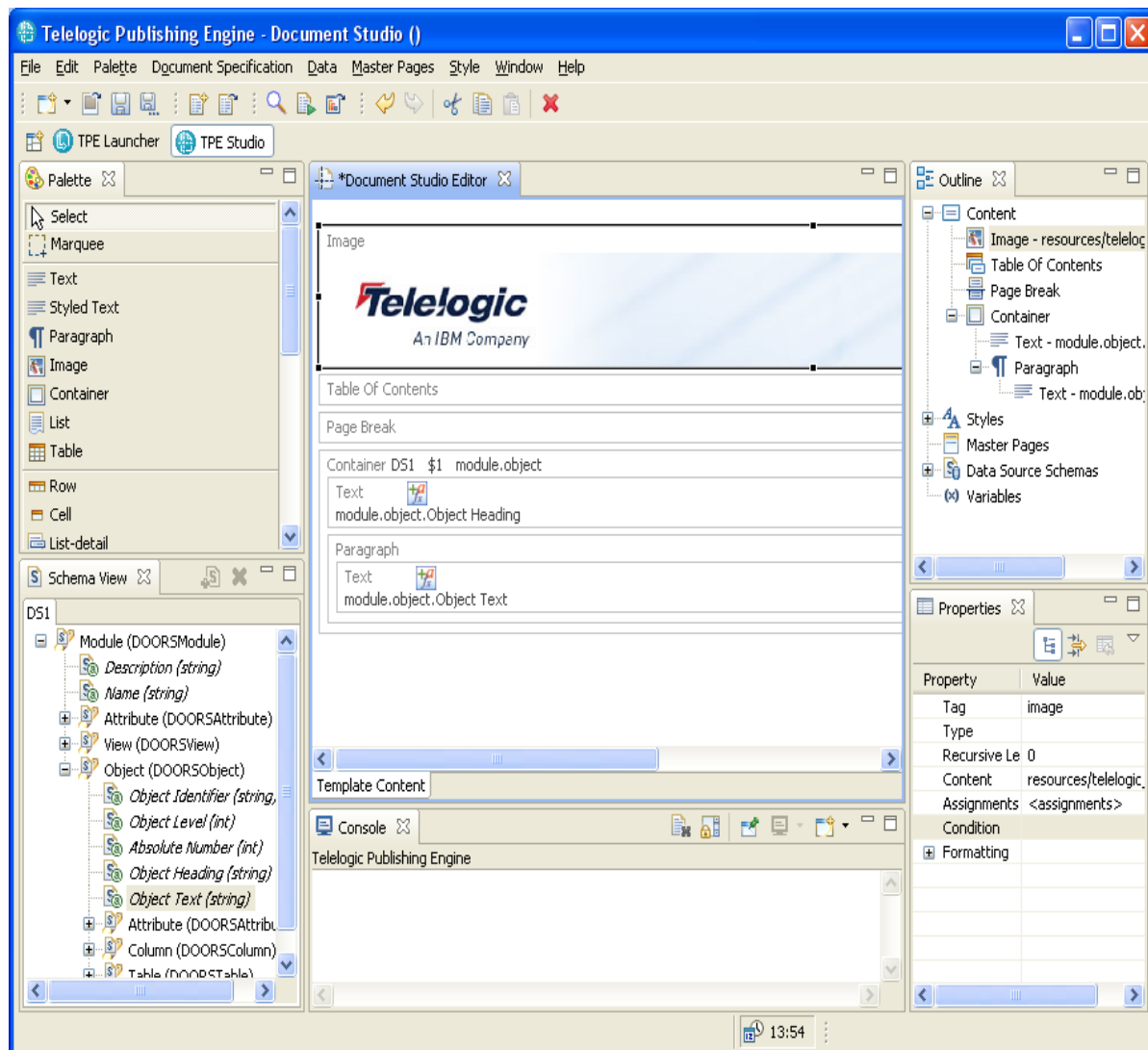


Figure 15

- Add a title to the document
- Add a paragraph with a text element

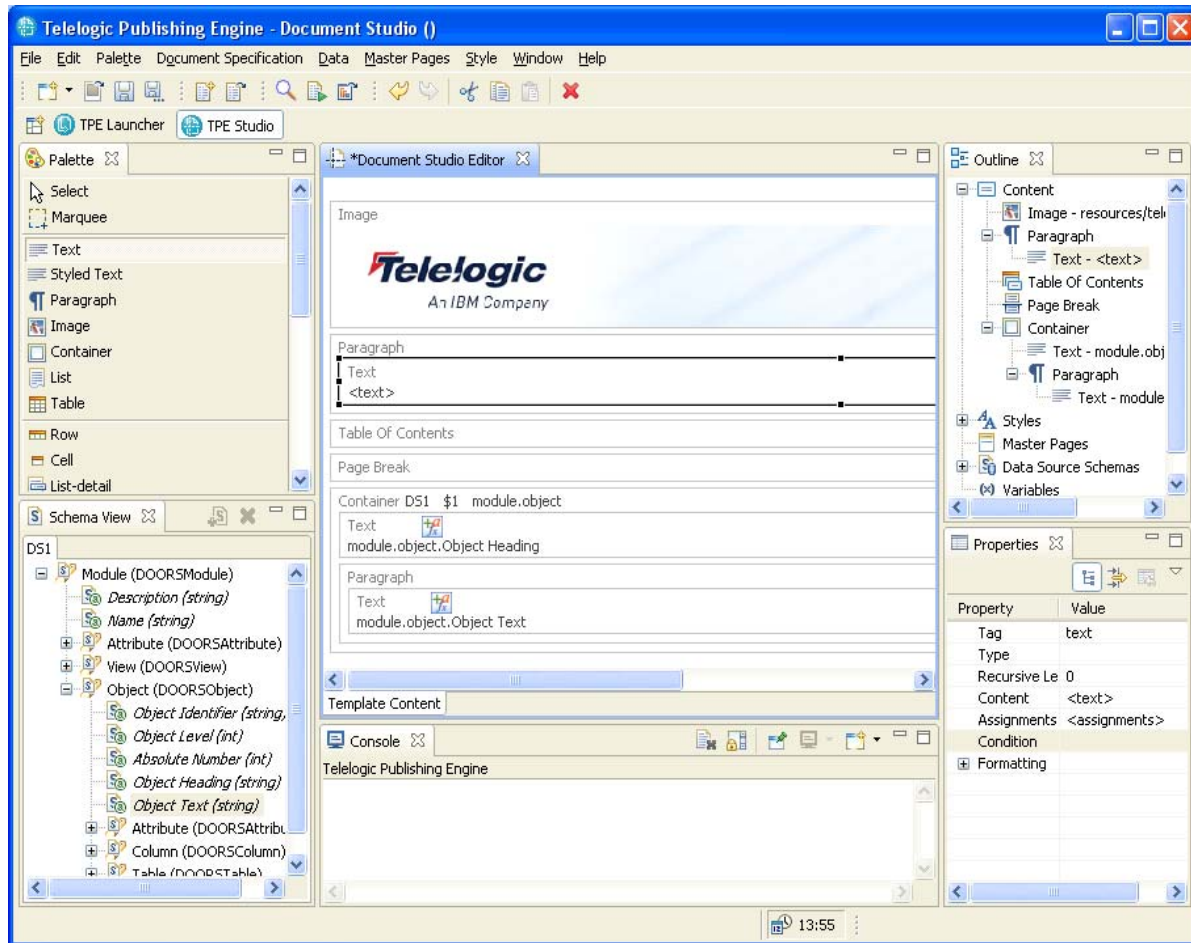


Figure 16

Set the text

Double click the text element or click the “Content” in the property page.

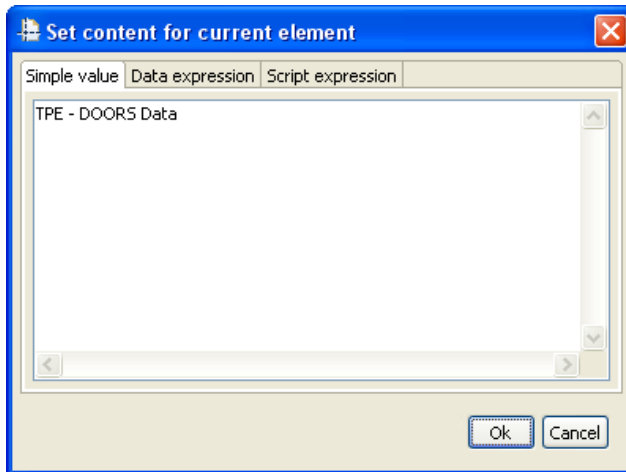


Figure 17

Define a title style

The newly created style is named “TPE_Title”

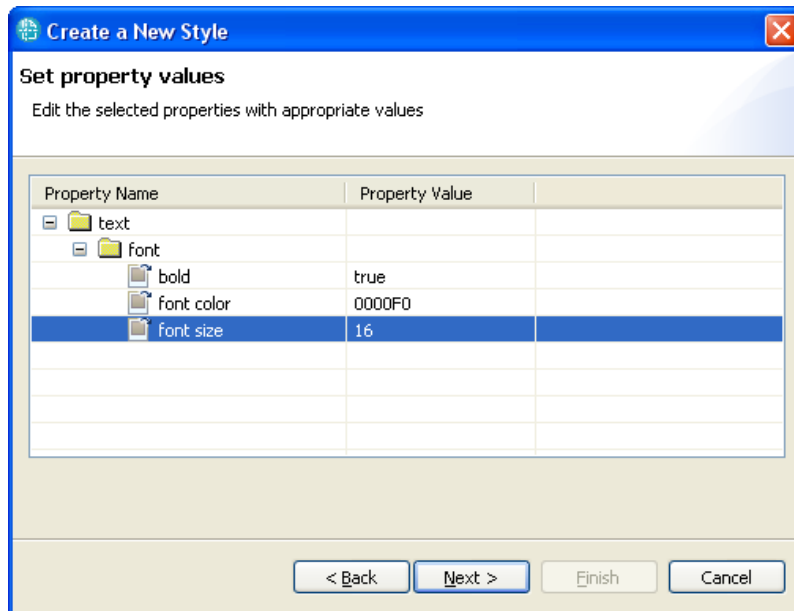


Figure 18

Set the style to the paragraph

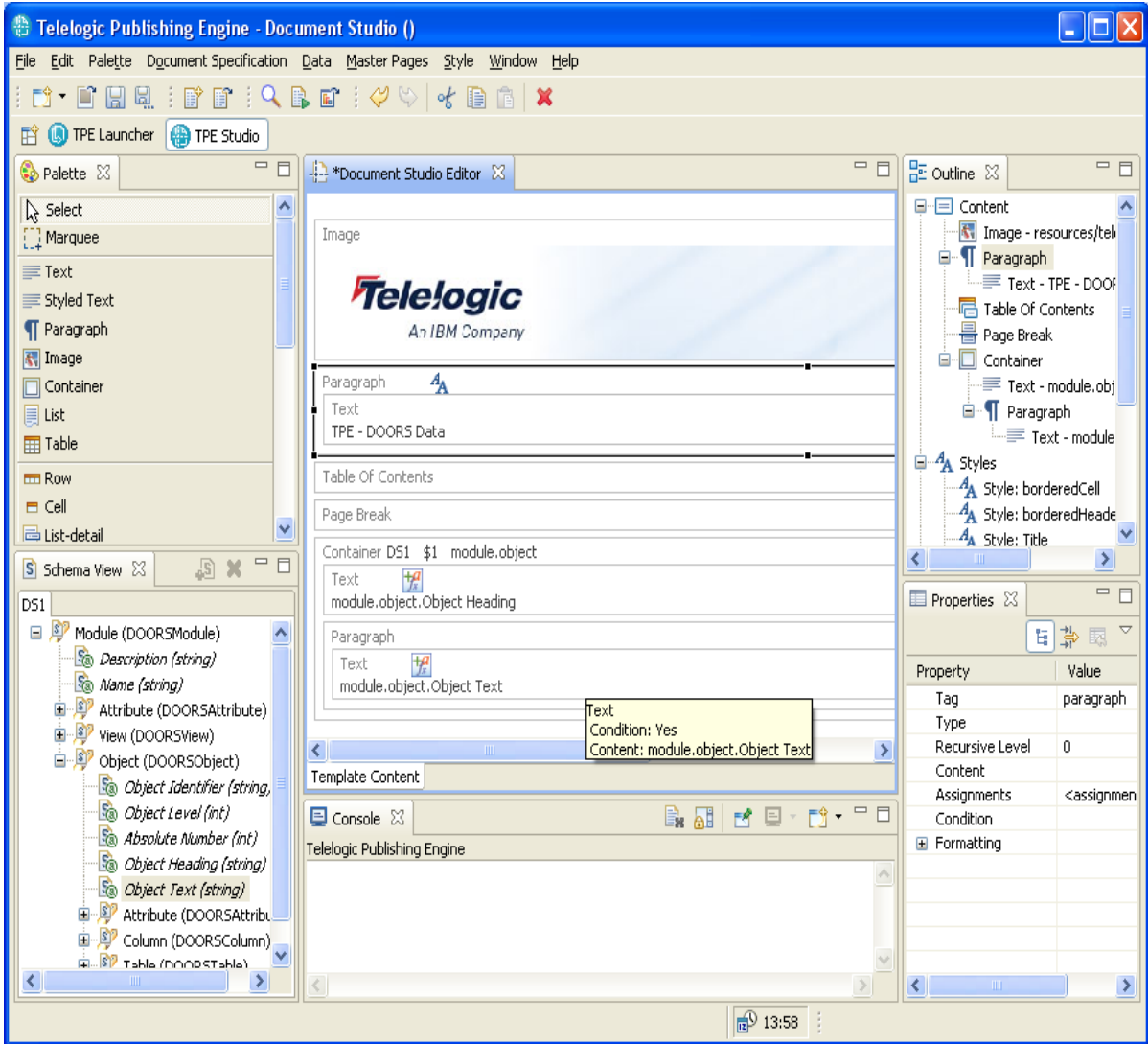


Figure 19

Create a master page for the data

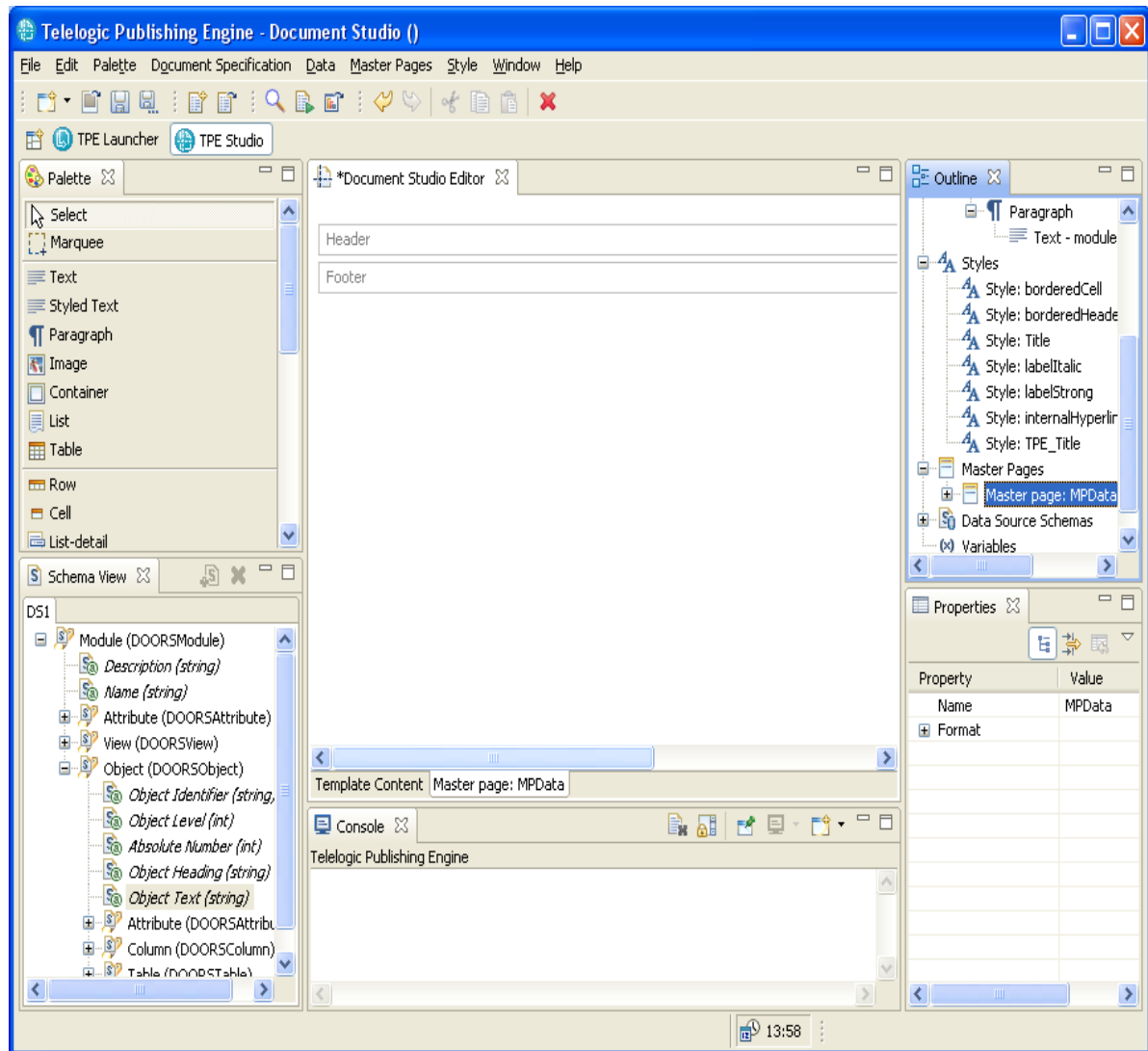


Figure 20

Add some static text in the page's header

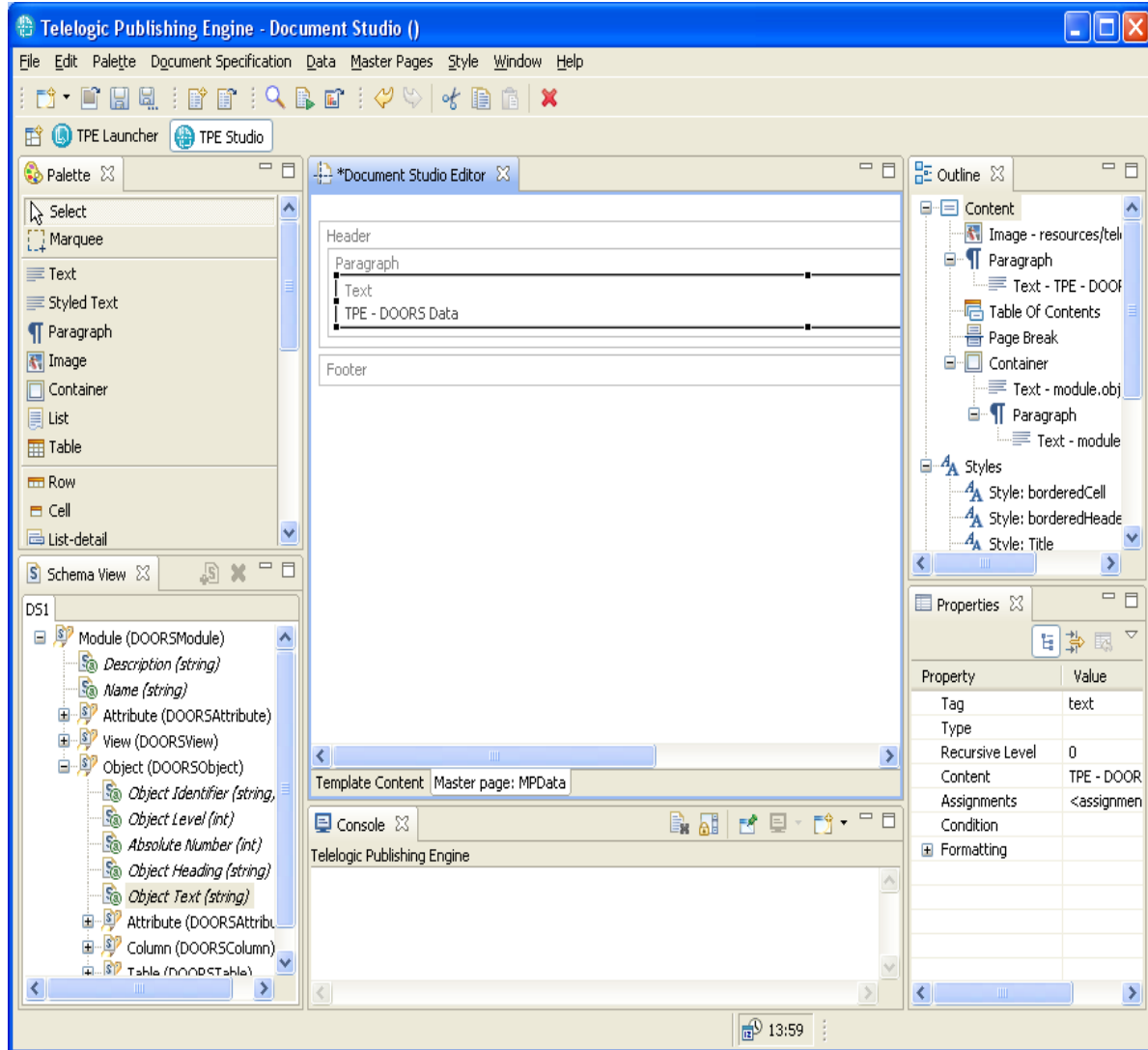


Figure 21

Add a page number field to the footer

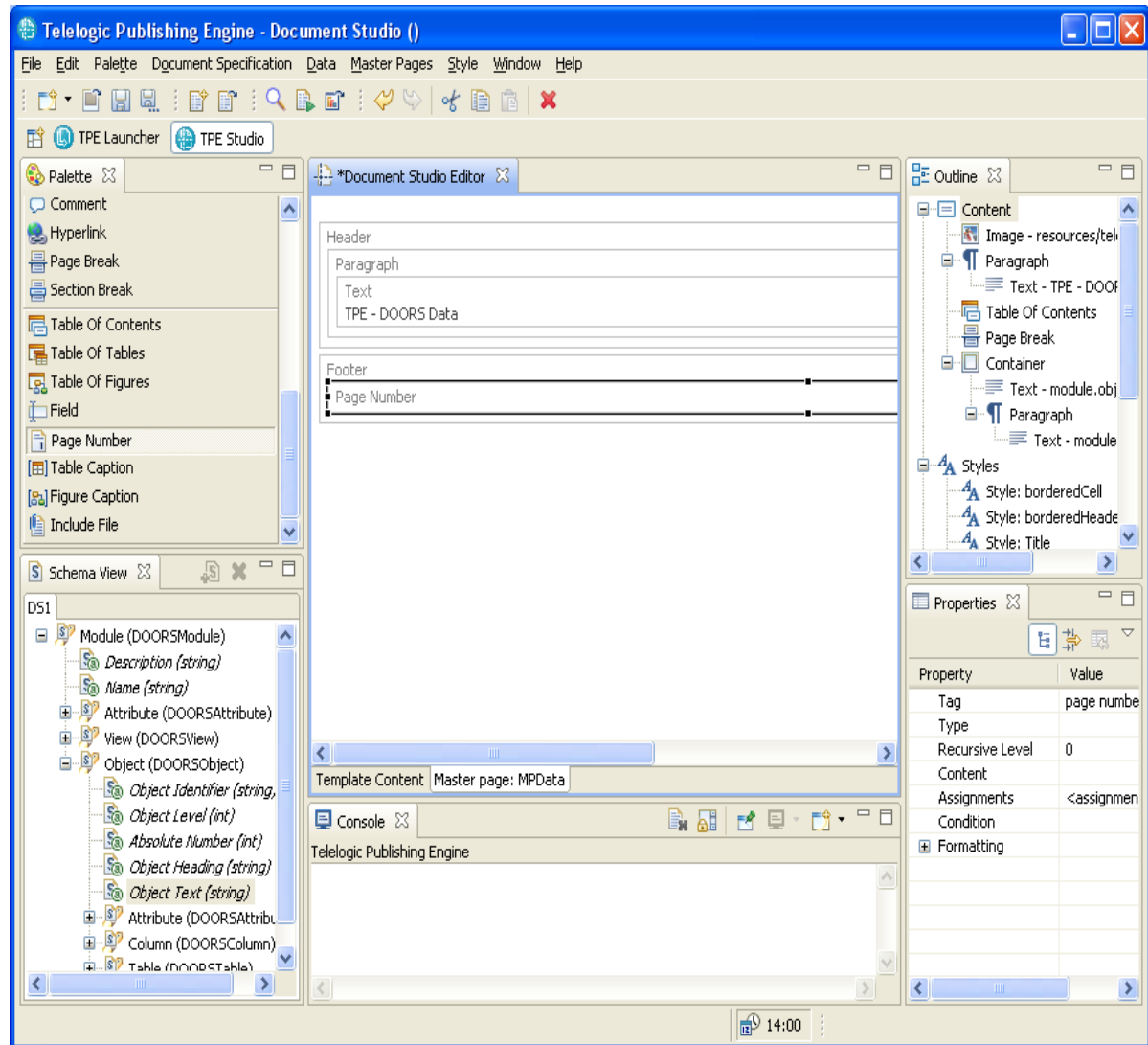


Figure 22

Assign the page

The master page is assigned to the container element.

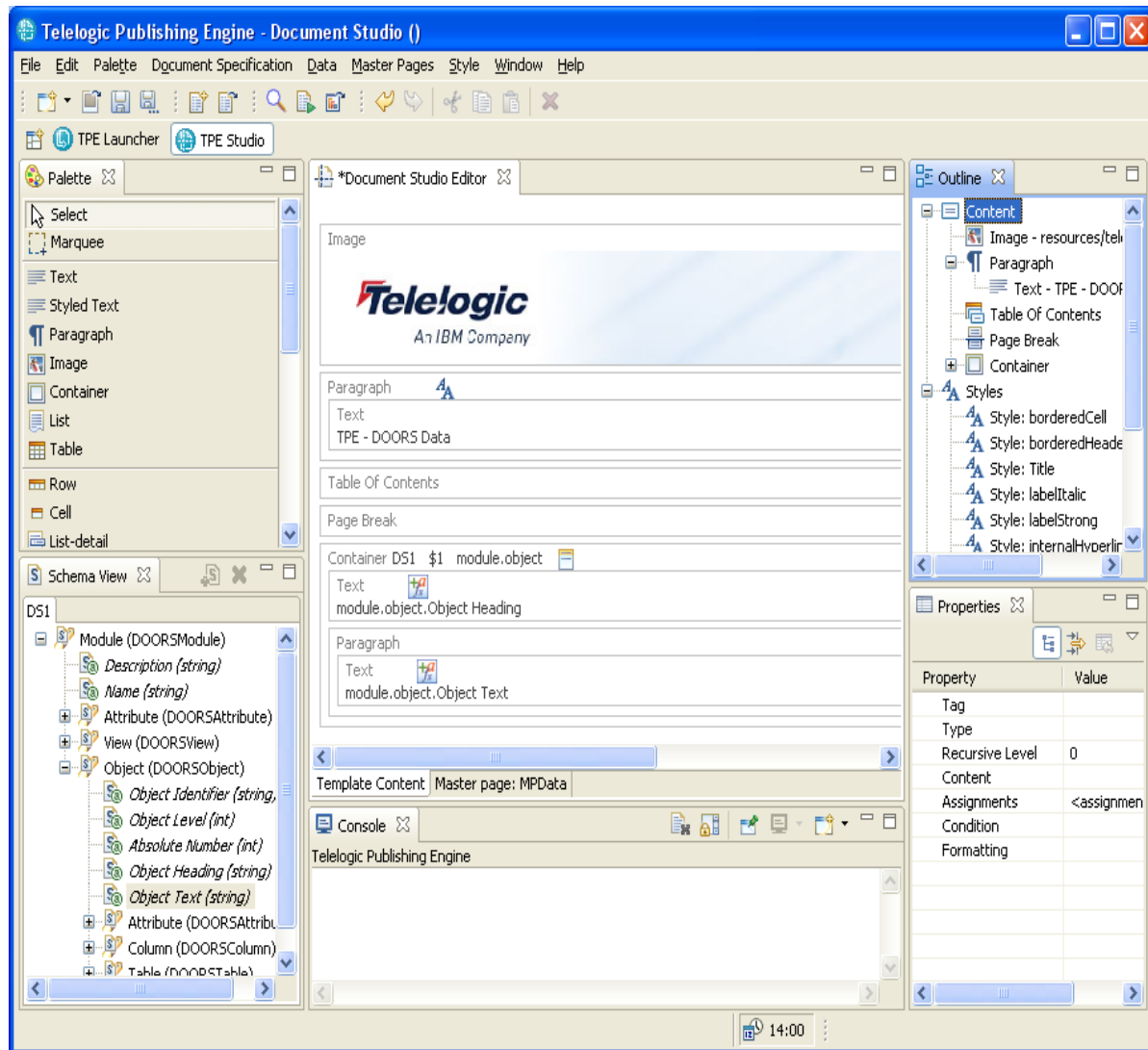


Figure 23

More advanced settings

Define a variable

The variable name is AuthorName.

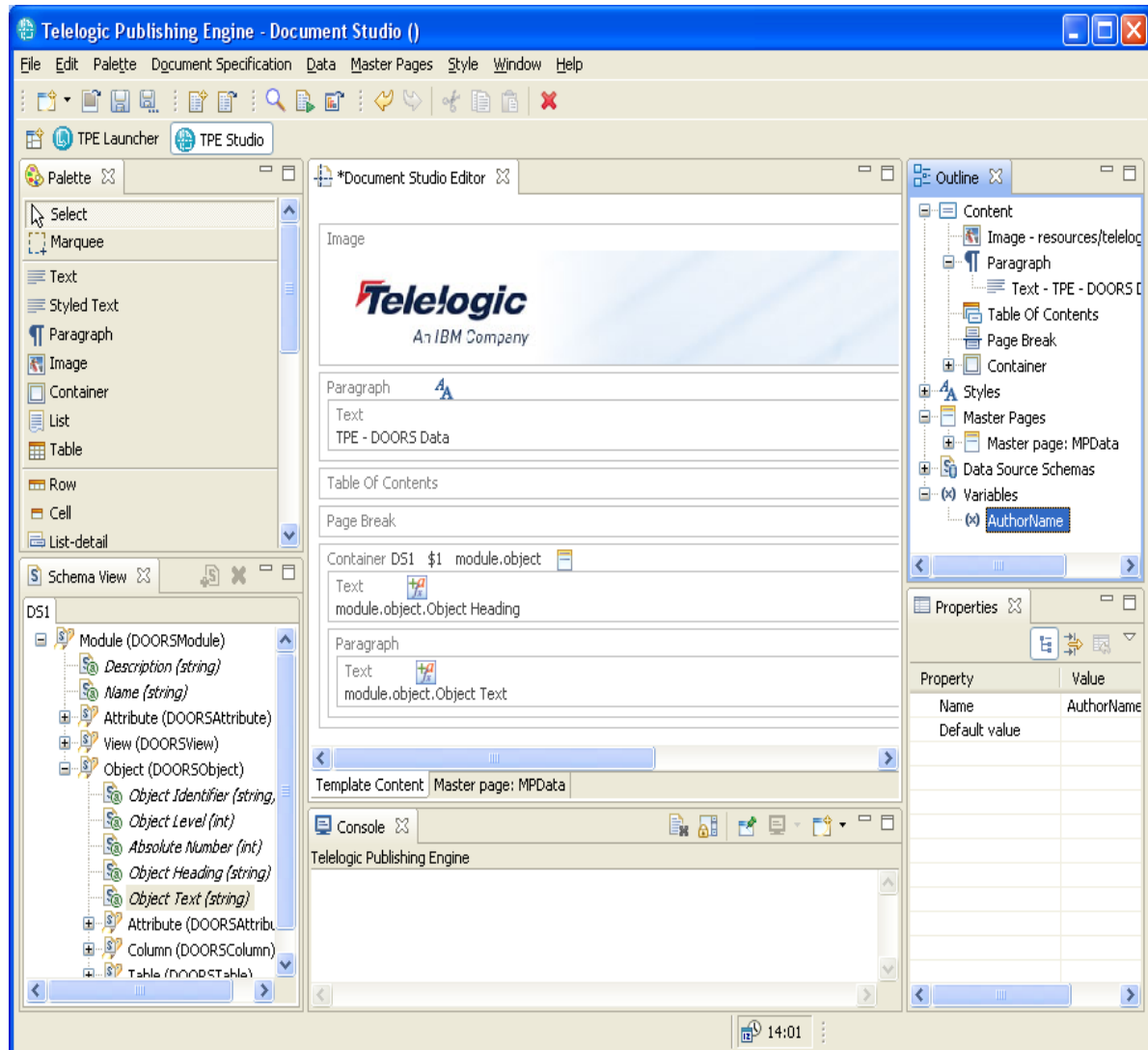


Figure 24

Use the variable in the template after the title

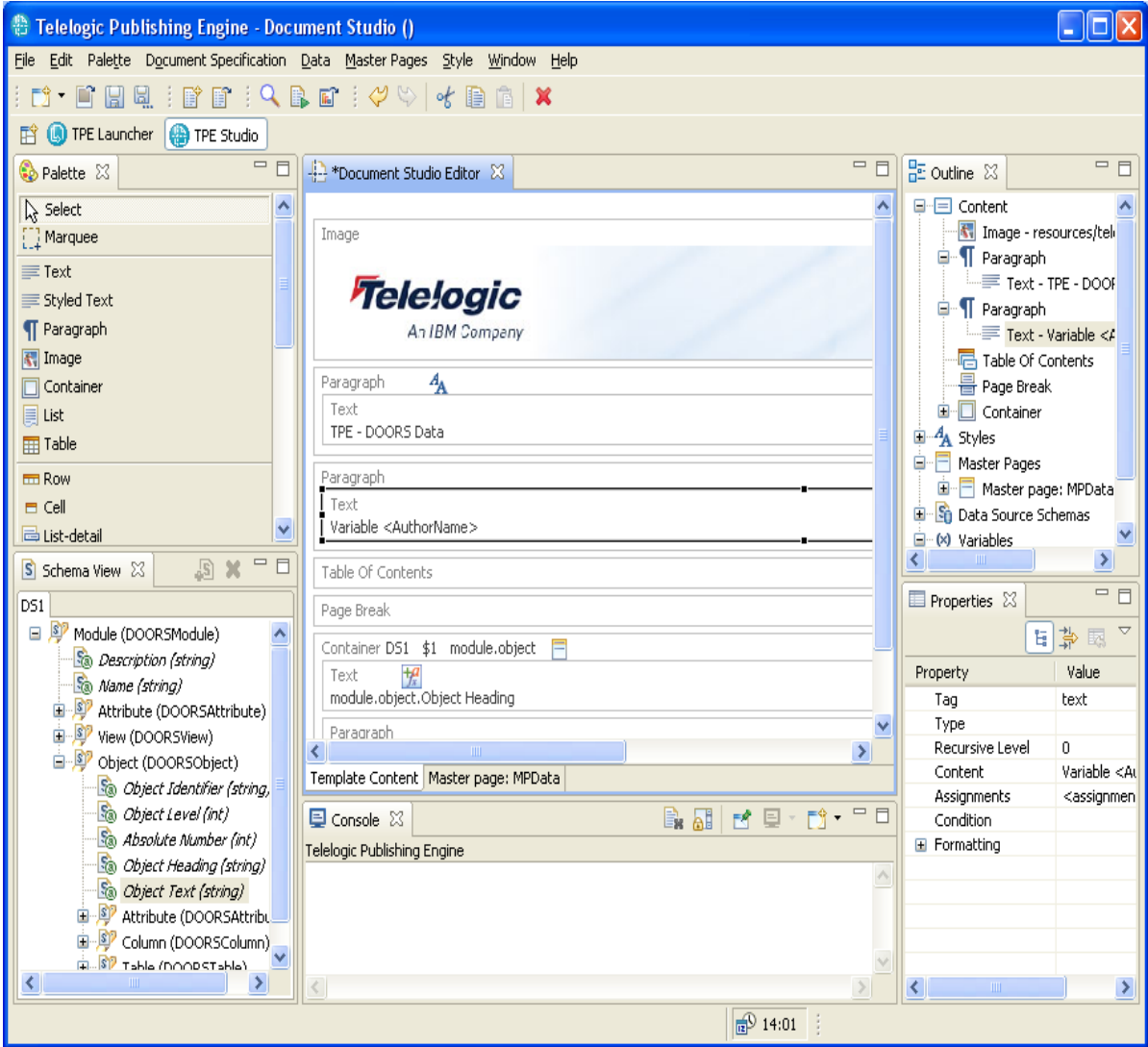


Figure 25

Generate the document

Before generating a document make sure you have saved the template.

Open the TPE Launcher Perspective

Use the button located in the top left part of the screen, right bellow the toolbar.

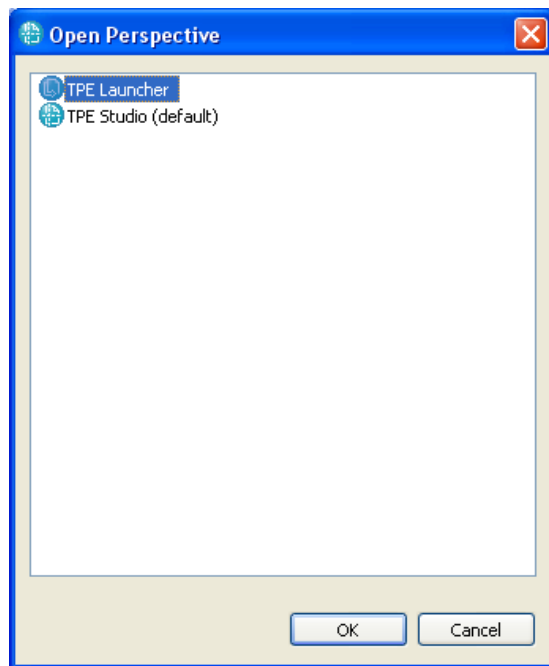


Figure 26

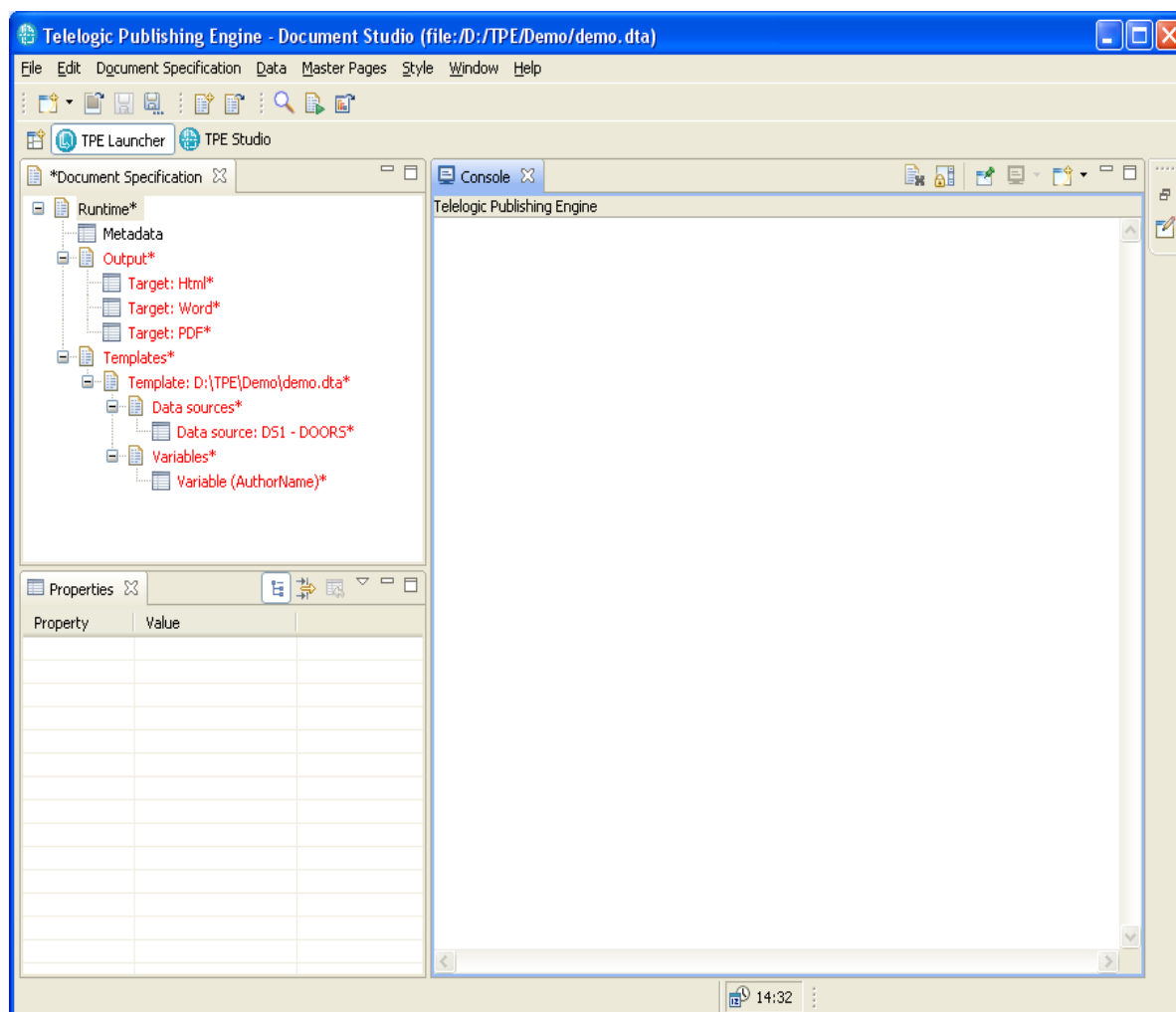


Figure 27

NOTE When the launcher is embedded in TPE Document Studio and the “keep document specification synchronized” option is checked in the preference page, the document specification is synchronized with the edited template at every load/close/save operation. Otherwise you need to manually synchronize the document specification to ensure all the data source schemas from the template have a data source equivalent in the document specification.

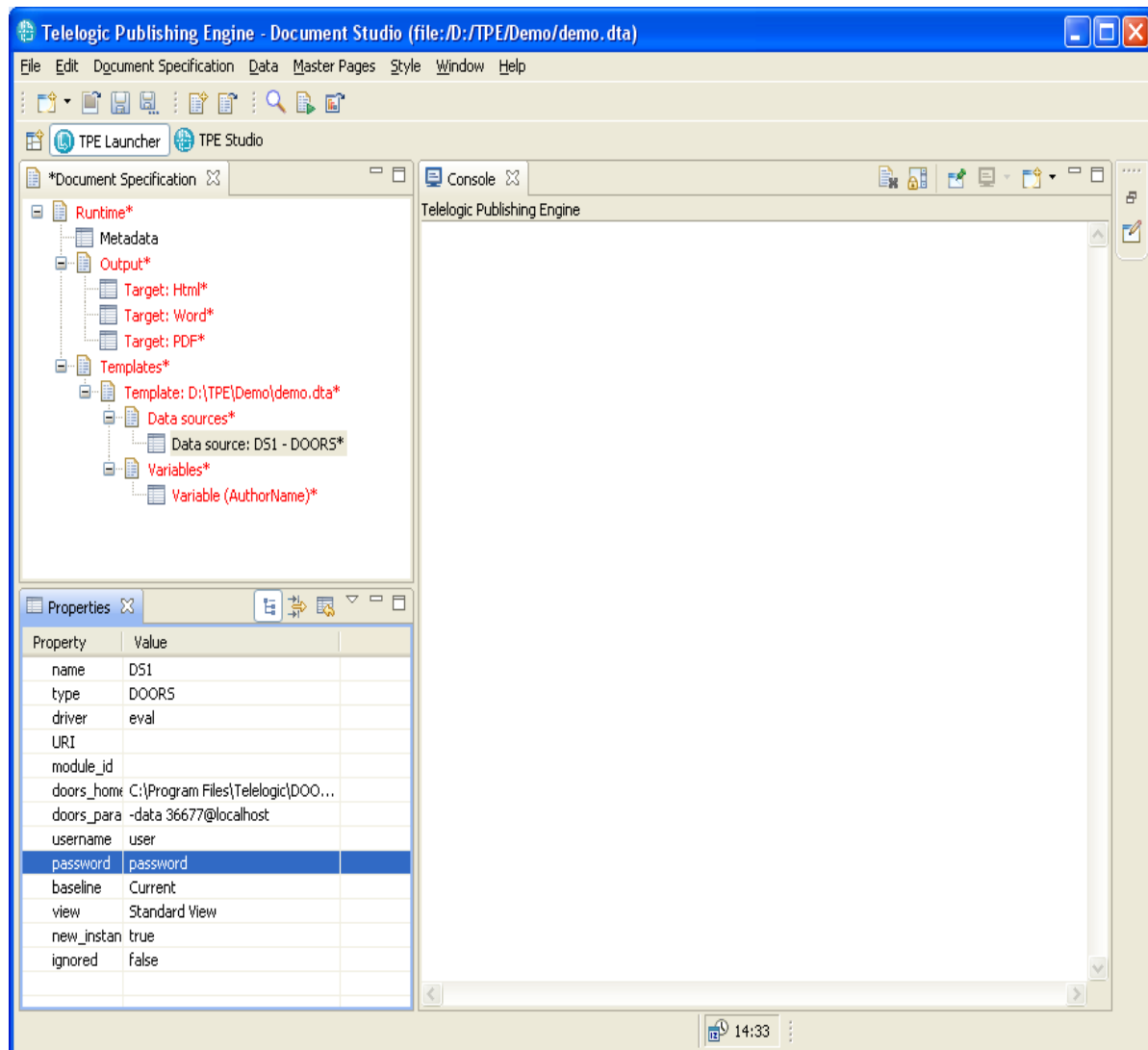
Configure the DOORS Data source

Figure 28

Set a value for the AuthorName variable

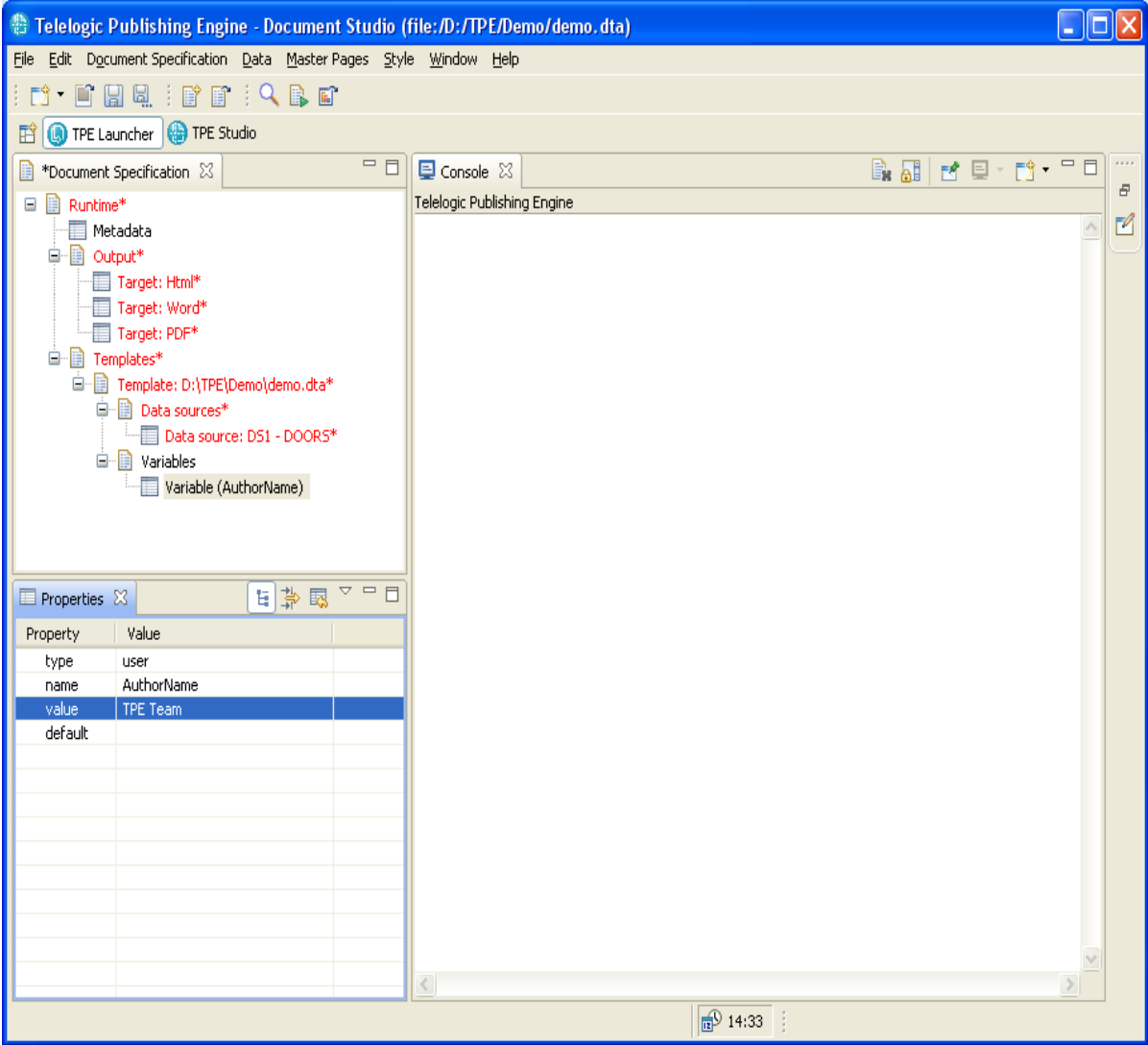


Figure 29

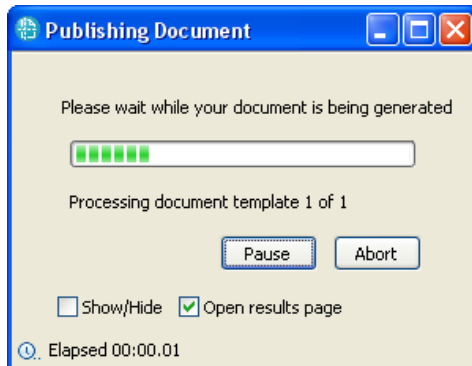
Generate the document

Figure 30

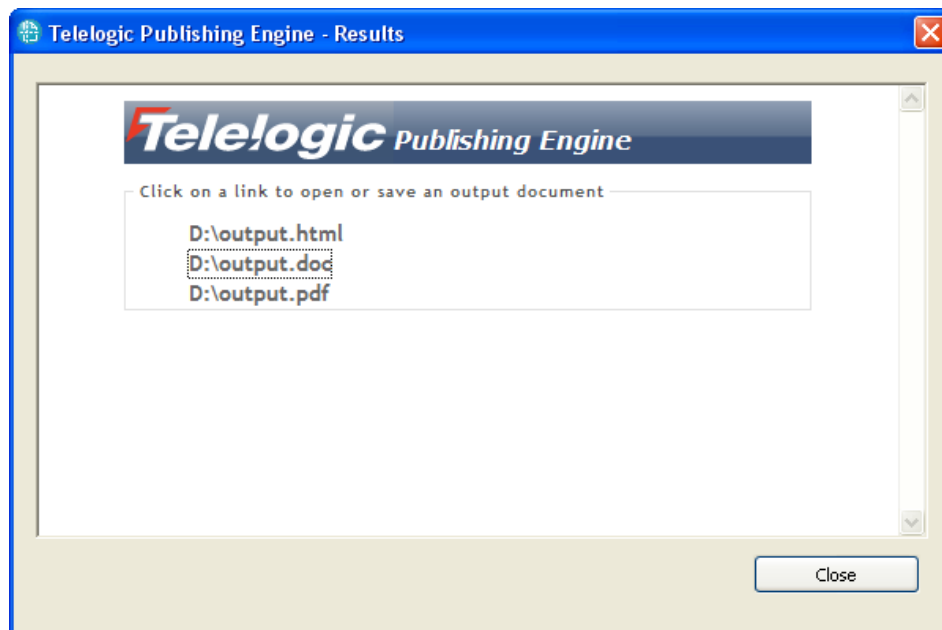
View the results

Figure 31

NOTE When you open the generated Word document for the first time you need to manually update the table of contents. You can use the provided "updateTOCs" macro to automate this task.

A template for Tau data

This chapter shows how to build a simple TPE Document Template. The output document will contain the list of top level packages, and for each package the list of classes and the diagrams contained in that package. For each class a table will be generated listing all the class's attribute names and types.

- Package
 - Diagrams
 - Diagram
 - Diagram
 - ...
 - Classes
 - Class
 - Attribute table
 - Class
 - Attribute table
 - ...

Start Document Studio

Add a Tau Data source Schema

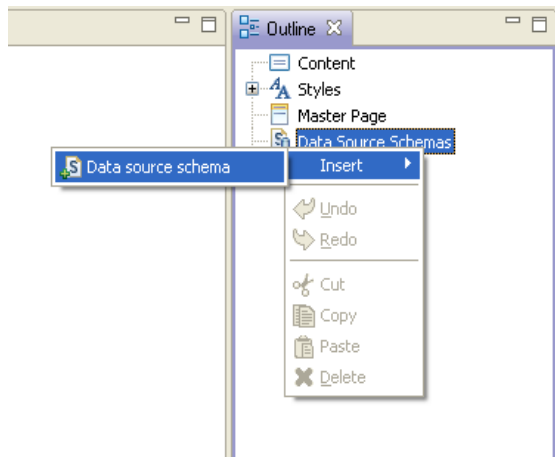


Figure 32 Selecte "Insert schema" from the outline's context menu

The “Add Datasource schema” wizard is started.

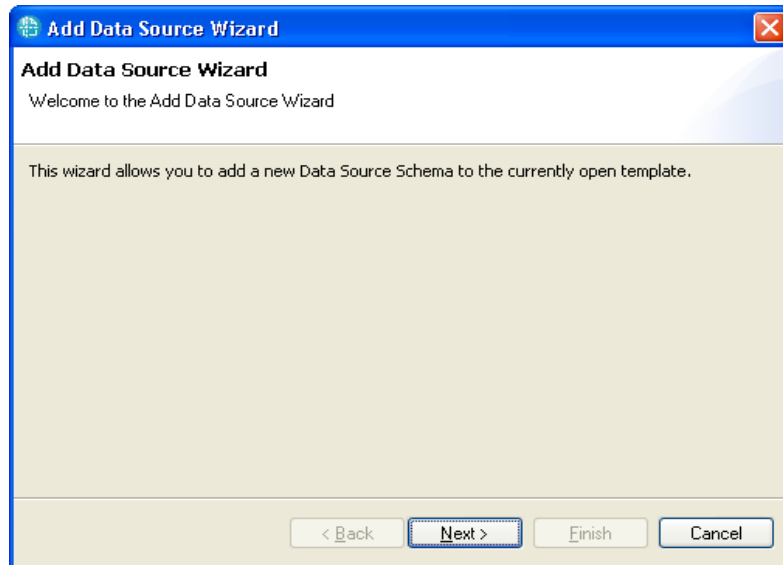


Figure 33

Select the ttdMetamodel.xsd schema provided with TPE. Make sure you set the data source type to Tau. You can use any value for the ID of the schema.

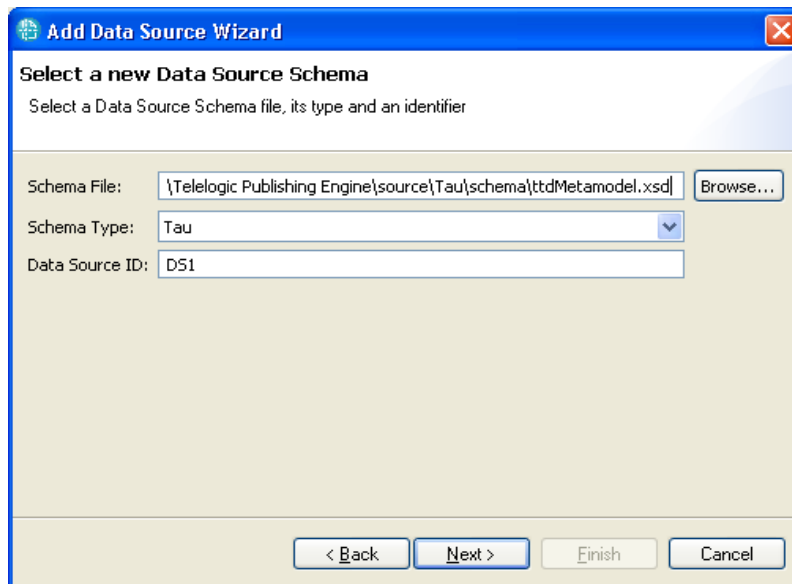


Figure 34

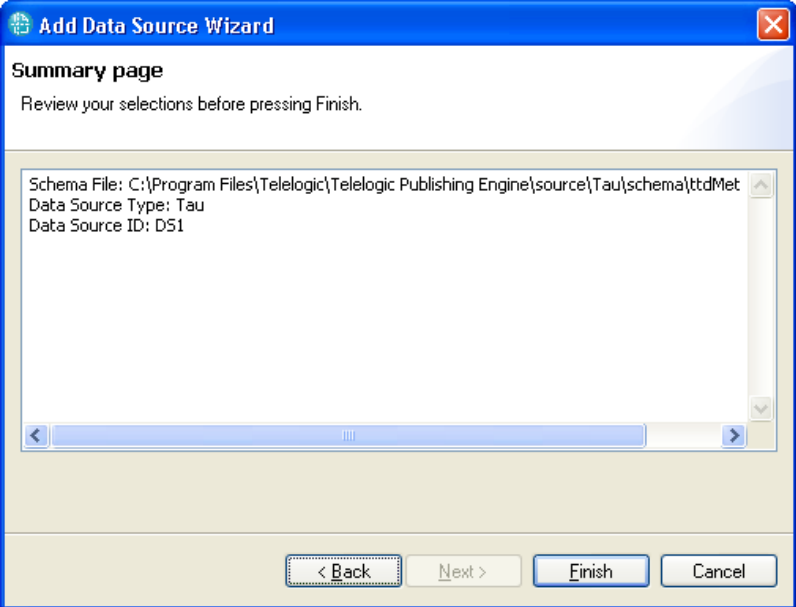


Figure 35

Once the wizard is complete, the new data source schema is added to the template.

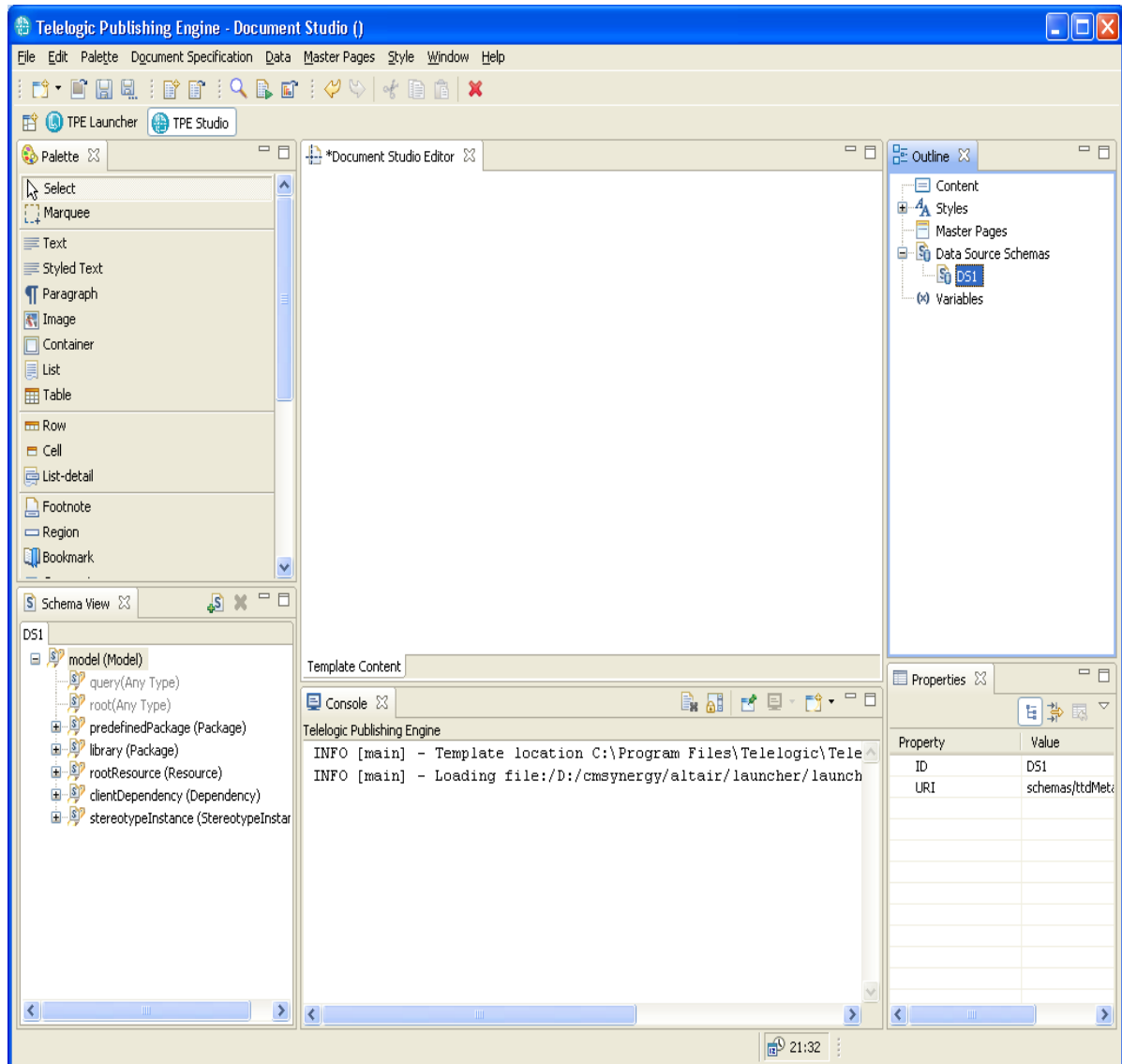


Figure 36 Tau data source schema added to the template

Save the document

Define the template content

Define a query for the top level packages. In order to do that add the "Package" cast under the *model.root* element by clicking the "Cast to type" button.

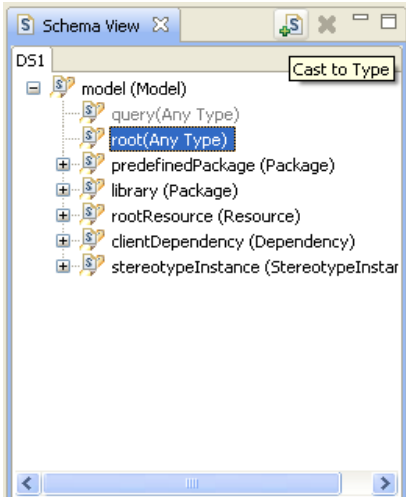


Figure 37

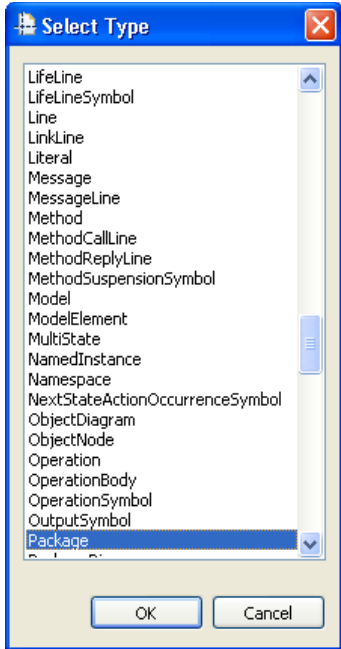


Figure 38

Create a container element in the template and drag the newly added Package element to it.

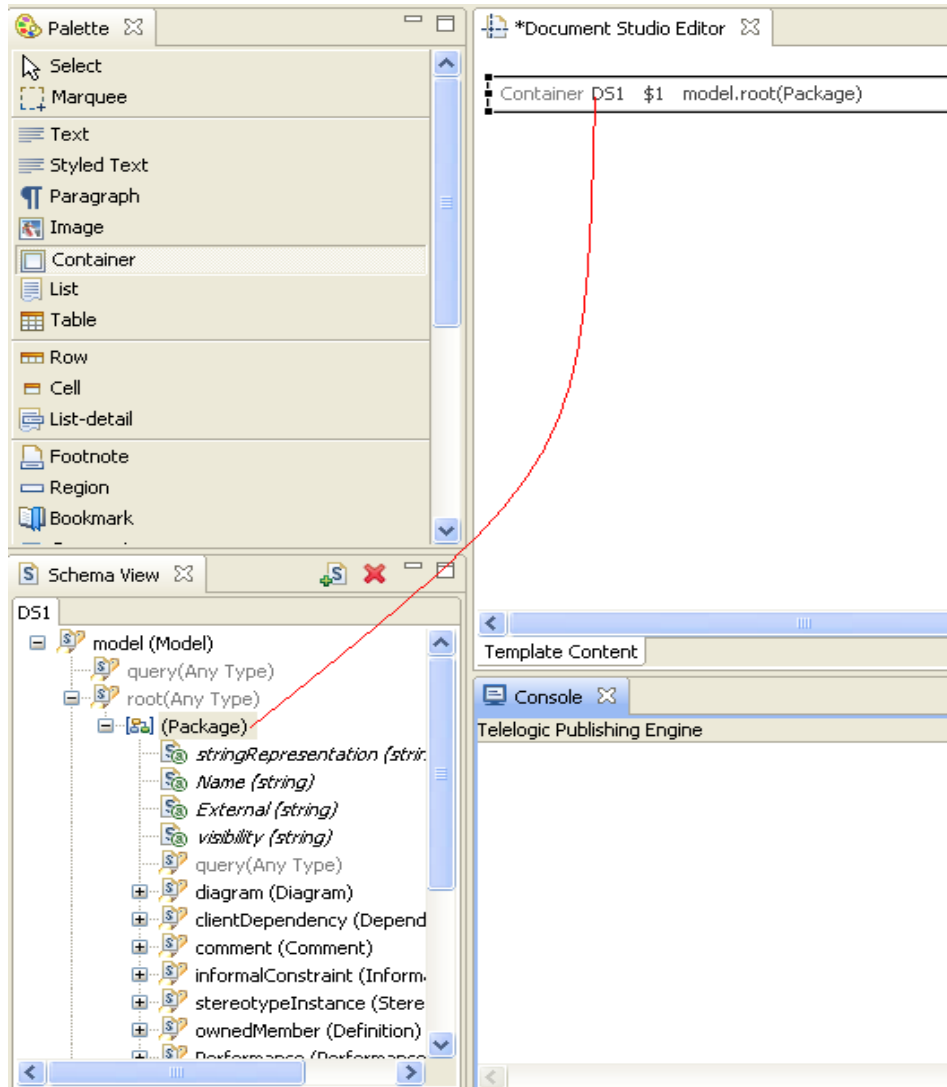


Figure 39

Create a paragraph in the container element and add the “Name” attribute.

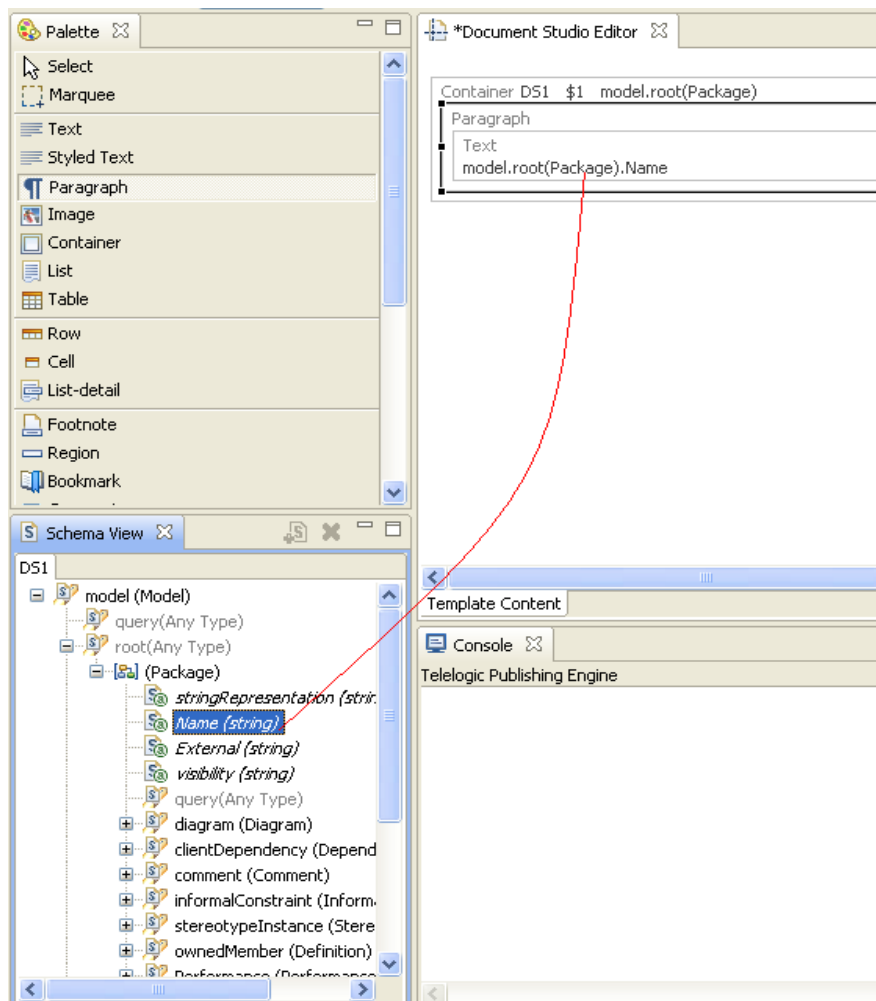


Figure 40

NOTE If you would generate the document using the template in its current form, the output will contain the name of all the top level packages in the model.

- Package
- Package
- Package

Save the document.

To continue, add the static text heading Diagrams for the list of diagrams by adding a Paragraph into the Container, adding Text into the paragraph, then double-click the text and set the value to Diagrams.

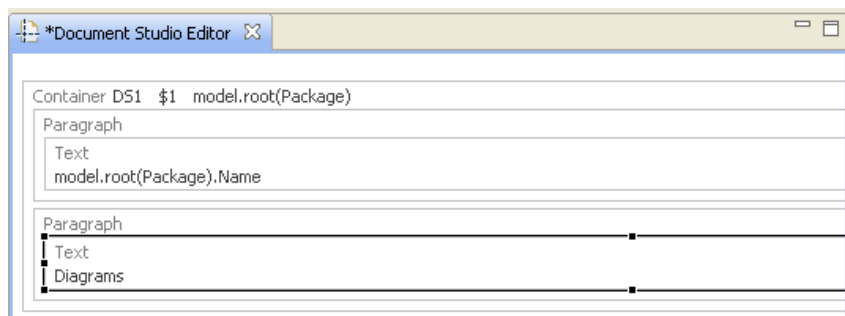


Figure 41

Add the package diagram element to the template.

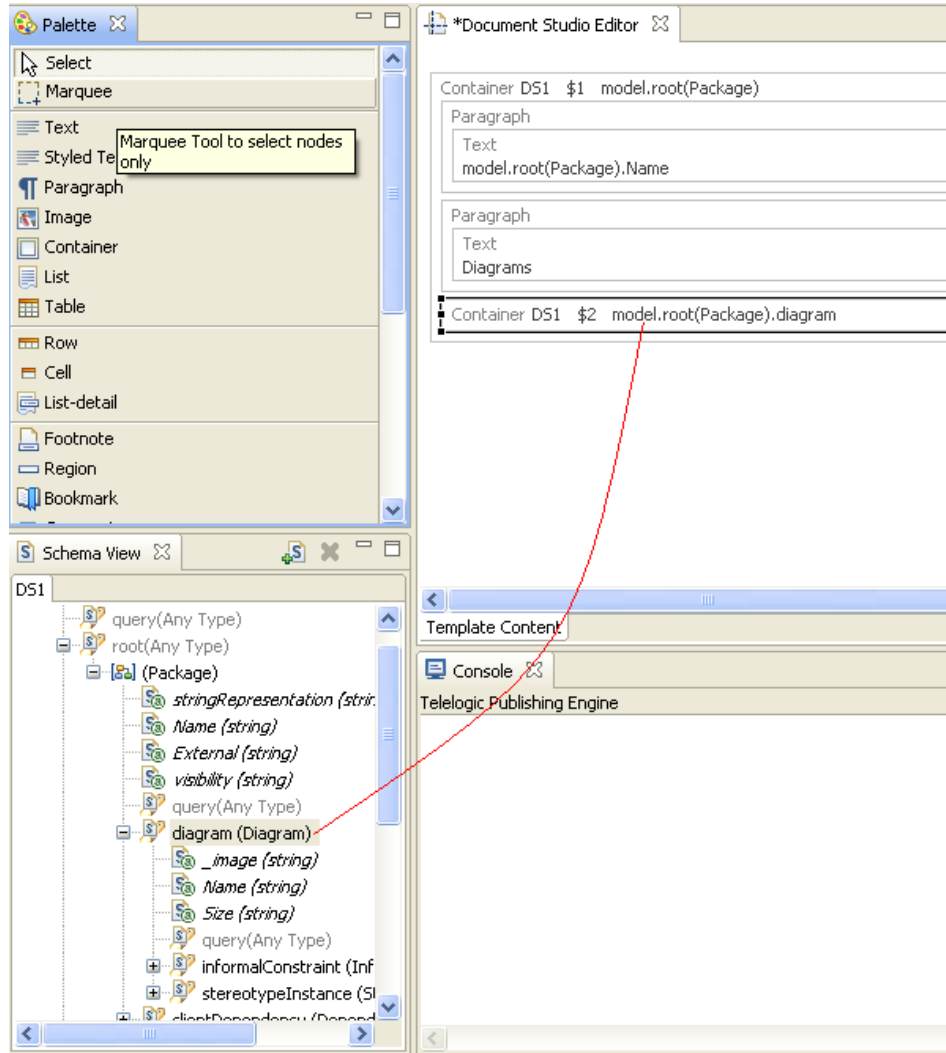


Figure 42

NOTE If you are interested in a specific diagram type you can add a cast to that diagram type below the diagram(Diagram) node and use it instead of using the generic "Diagram" type.

Add an image element in the container. Set its content to be the “_image” attribute of *model.root(Package).diagram(Diagram)*.

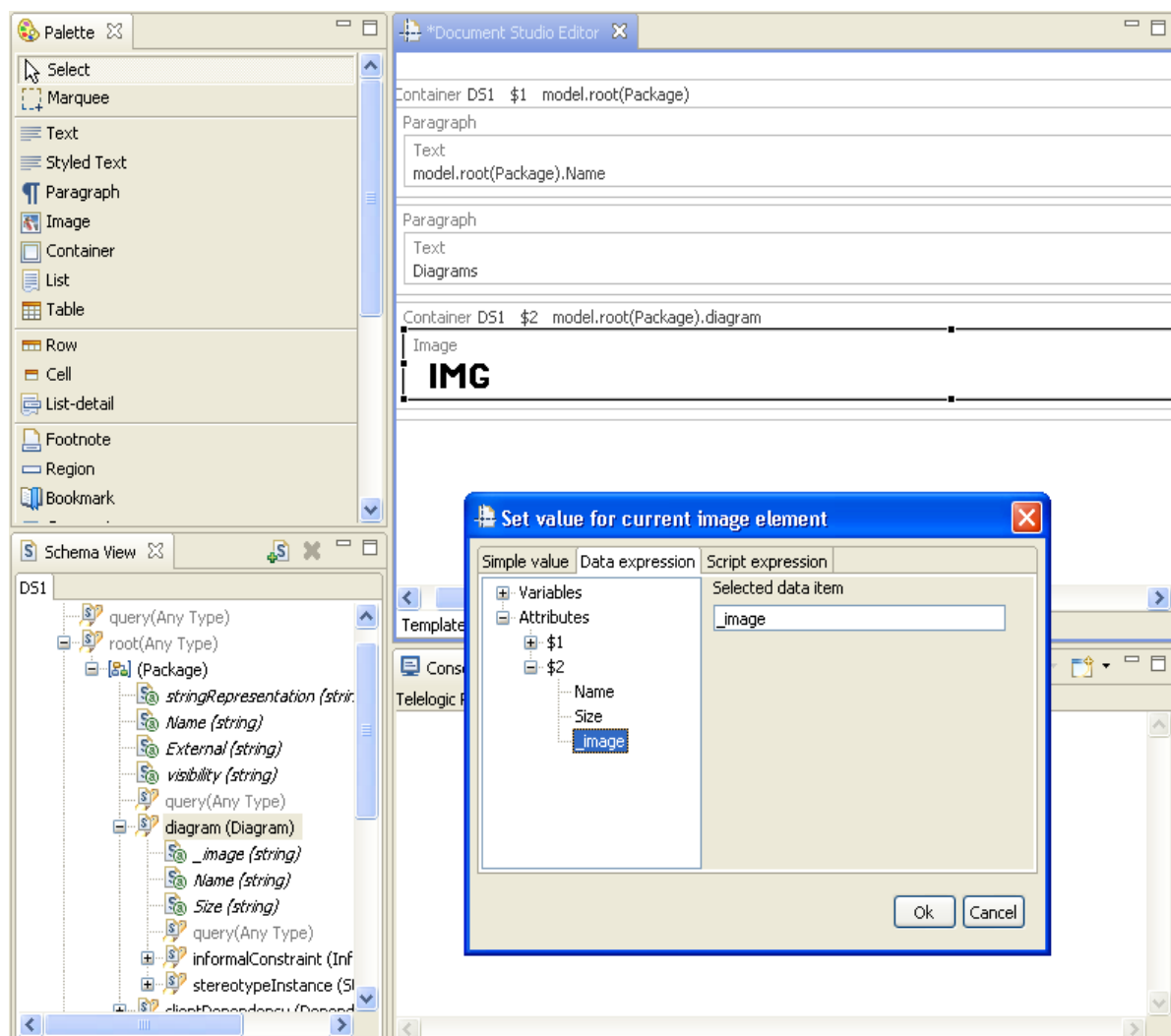


Figure 43

Add the name of the diagram below its image. Additionally you can add a figure caption field so you can build a Table of Figures.

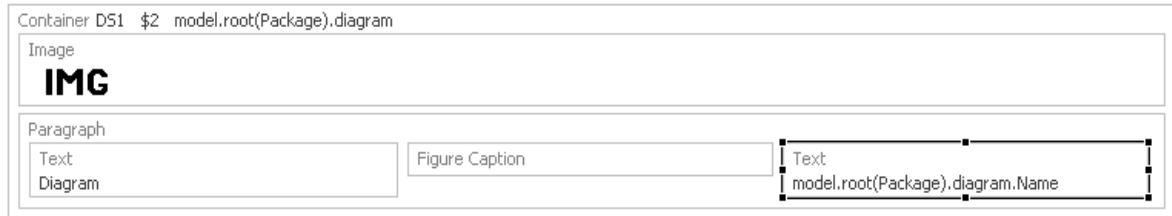


Figure 44

NOTE If you were to generate the document using the template in its current form, the output will contain the name of all the top level packages in the model, and all the diagrams in each package:

- Package
 - *Diagrams*
 - Diagram (image and name)
 - Diagram (image and name)
 - ...
- Package
 - *Diagrams*
 - Diagram (image and name)
 - Diagram (image and name)
 - ...
- ...

Save the document.

Add the static text for the class list.

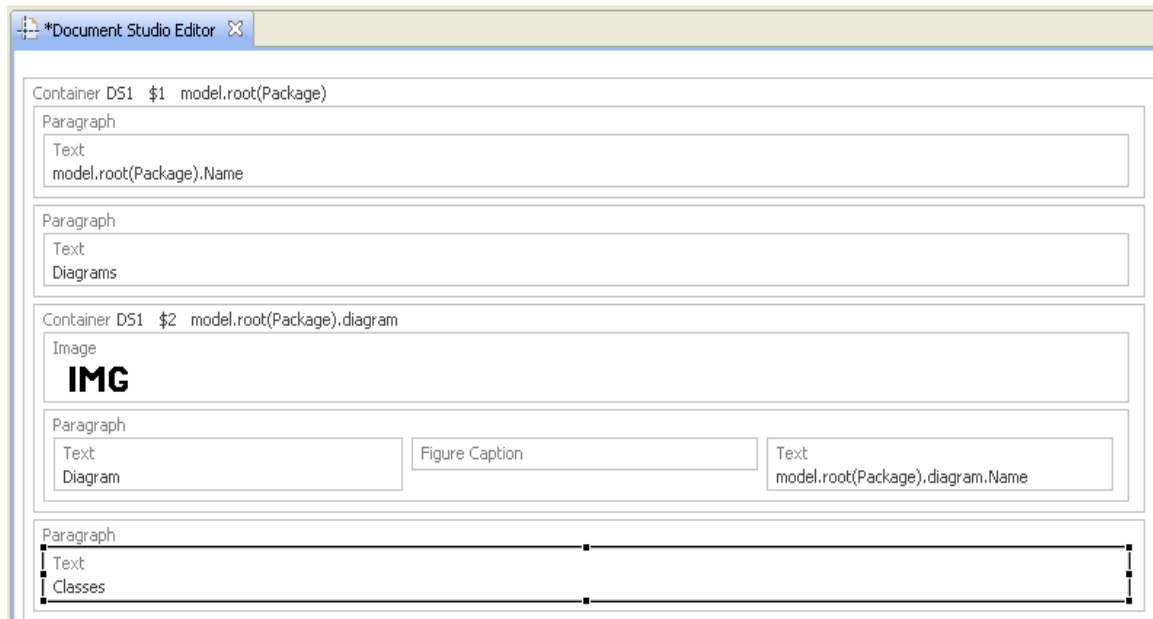


Figure 45

Add the “Class” type cast for the “ownedMember” element of the package and use it to create the query.

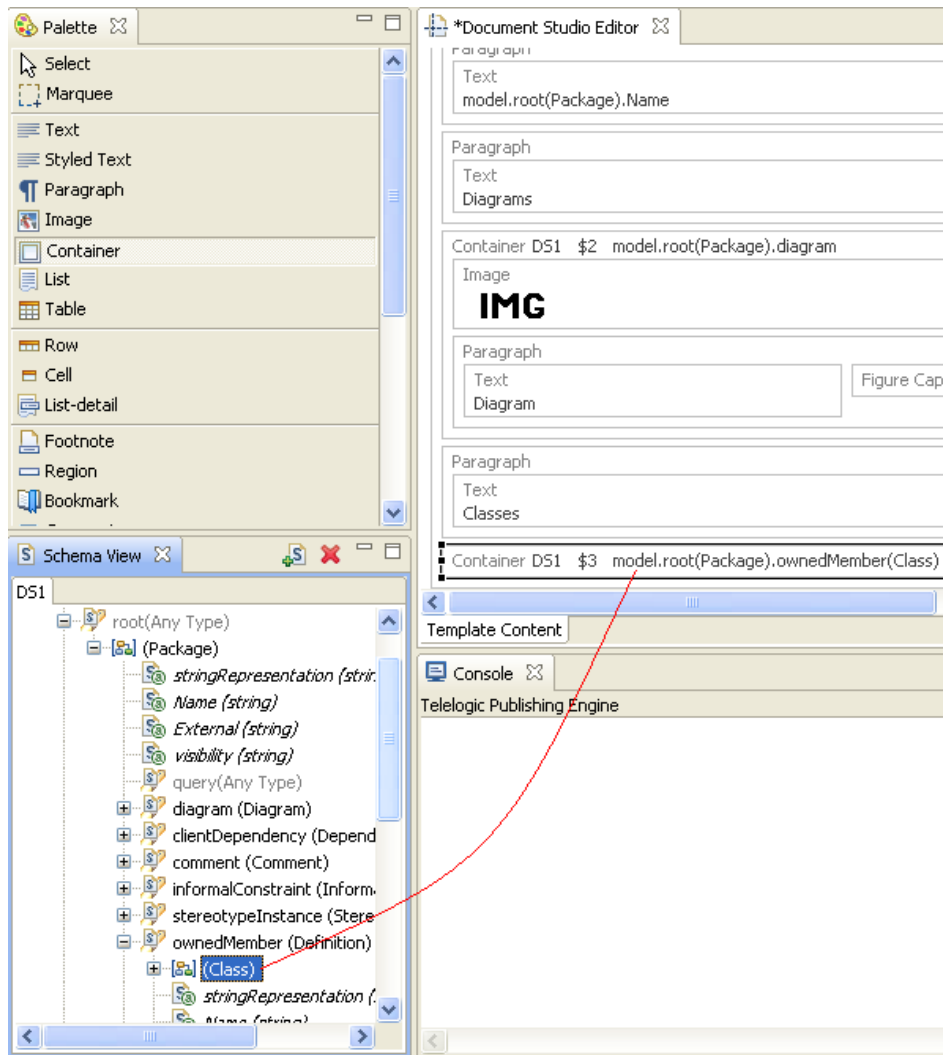


Figure 46

Add the name of the package in its own paragraph:

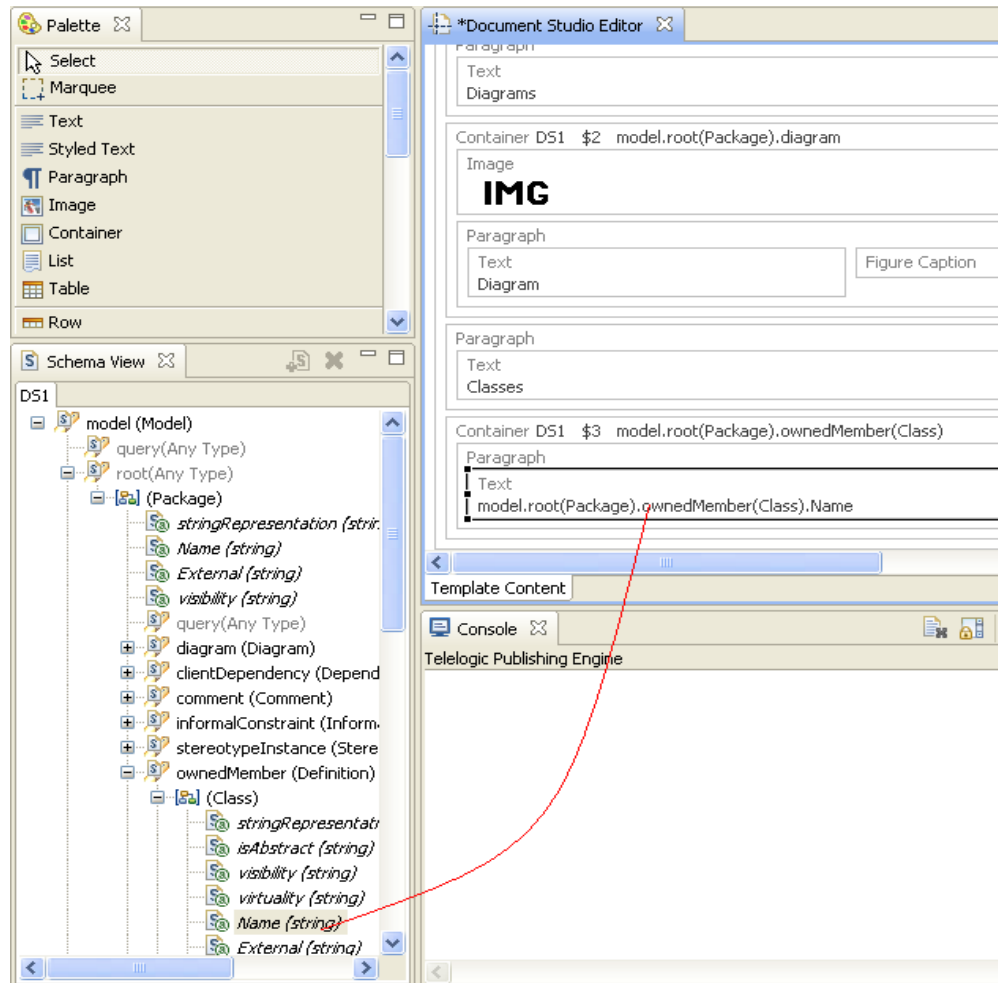


Figure 47

NOTE If you would generate the document using the template in its current form, the output will contain the name of all the top level packages in the model, and all the diagrams in each package:

- Package
 - *Diagrams*
 - Diagram (image and name)
 - Diagram (image and name)
 - ...
 - *Classes*

- Class 1
- Class 2
- Class 3
- ...
- Package
 - *Diagrams*
 - Diagram (image and name)
 - Diagram (image and name)
 - ...
 - *Classes*
 - Class 1
 - Class 2
 - Class 3
 - ...
- ...

Save the document.

Create the table with two rows and two cells that will host the class attributes:

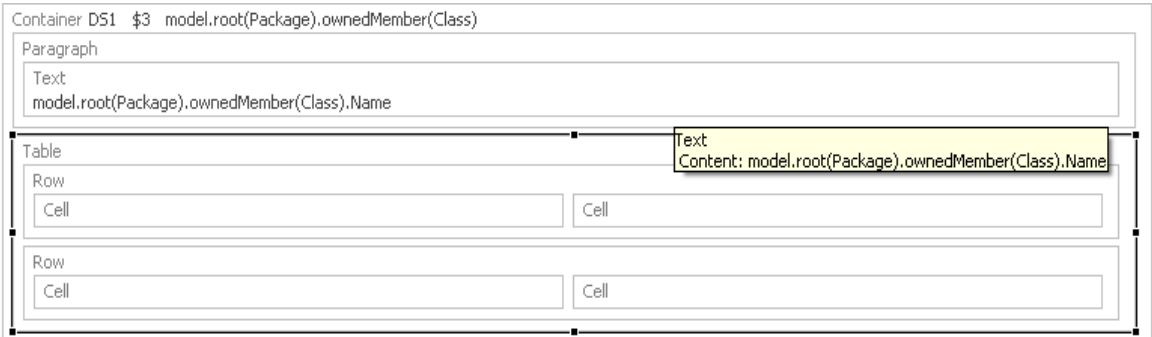


Figure 48

Add the “Attribute” type cast to the “ownedMember” element of Class and use it as a query on the second row of the table. At the same time apply the borderedCell style to all the table’s cells.

Container D51 \$3 model.root(Package).ownedMember(Class)	
Paragraph	
Text model.root(Package).ownedMember(Class).Name	
Table	
Row	
Cell ⁴ A	Cell ⁴ A
Text Name	Text Type
Row D51 \$4 model.root(Package).ownedMember(Class).ownedMember(Attribute)	
Cell ⁴ A	Cell ⁴ A

Figure 49

Use the attribute name in the first cell:

Container D51 \$3 model.root(Package).ow	
Paragraph	
Text model.root(Package).ownedMember(Class).Name	
Table	
Row	
Cell ⁴ A	Cell ⁴ A
Text Name	Text Type
Row D51 \$4 model.root(Package).ownedMember(Class).ownedMember(Attribute)	
Cell ⁴ A	Cell ⁴ A
Text model.root(Package).ownedMember(Class).ownedMember(Attribute)	

Figure 50

Drag the attribute's type element as q query on the 2nd cell of the 2nd row and drag the name attribute in the cell.

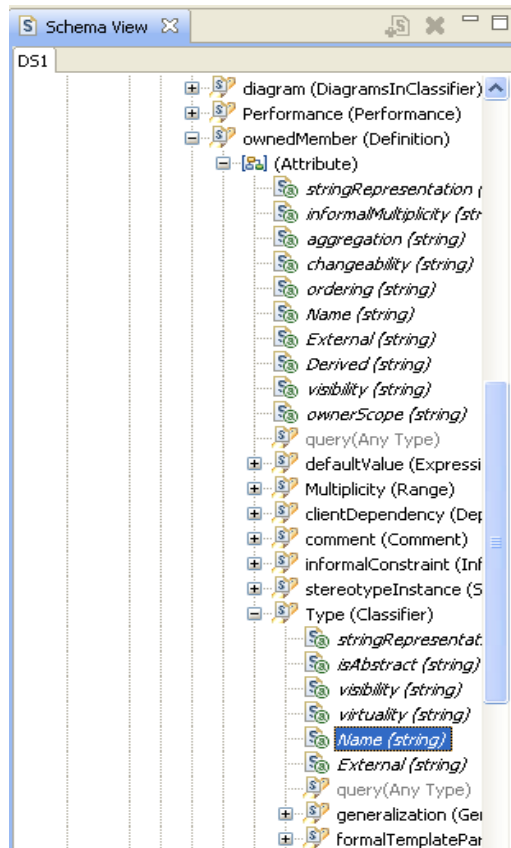


Figure 51

Container D51 \$3 model.root(Package).ownedMember(Class)	
Paragraph	
Text model.root(Package).ownedMember(Class).Name	
Table	
Row	
Cell 4A Text Name	Cell 4A Text Type
Row D51 \$4 model.root(Package).ownedMember(Class).ownedMember(Attribute)	
Cell 4A Text model.root(Package).ownedMember(Class).ownedMember(Attribute)	Cell D51 \$5 model.root(Package).ownedMember(Class).ownedMember Text model.root(Package).ownedMember(Class).ownedMember(Attribute)

Figure 52

NOTE Setting a query on a cell/row will generate as many cells/row as the query returns. But since an attribute has only 1 type, the query will return a single element.

Save the document.

Generate the document

Open the launcher perspective

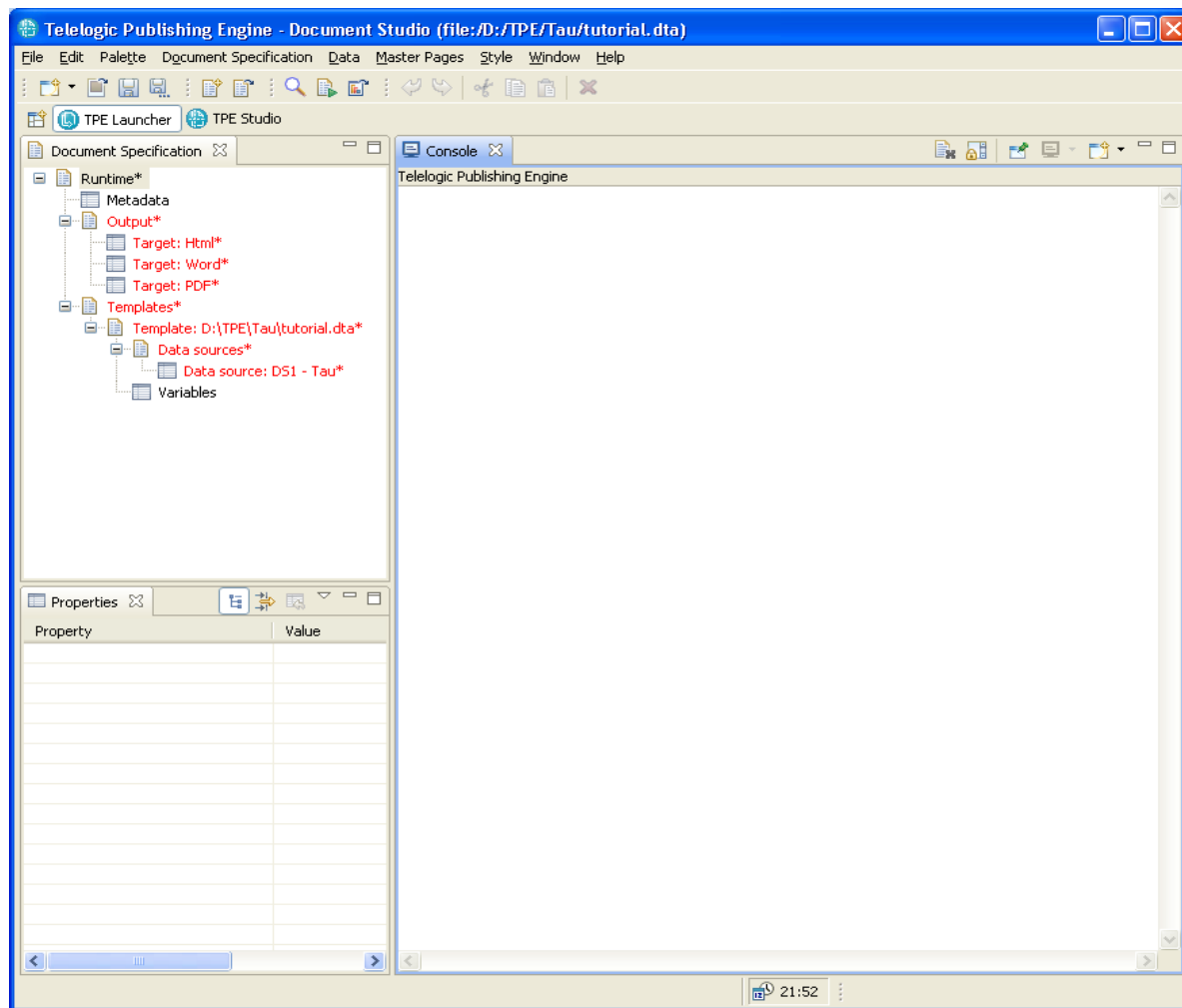


Figure 53

Select the Tau project (.ctp file) you wish to use as concrete data source for the DS1 schema used in the template. You can use one of the examples provided with Tau, which can be found in the examples directory below the Tau installation directory (on Windows the default location of the examples is C:\Program Files\Telelogic\Tau_4.2\examples):

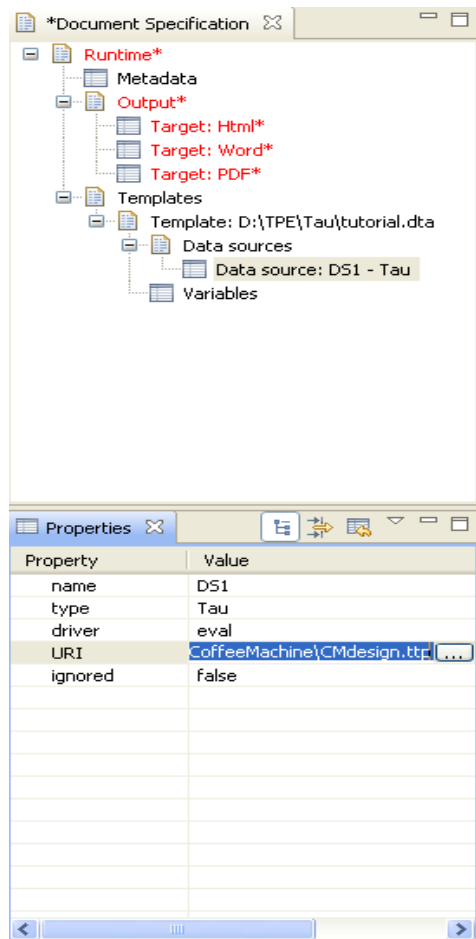


Figure 54

NOTE Optionally, you can configure each output target.

Start the document generation process. TPE will ask you to save the changes to the document template, if any unsaved changes exist.

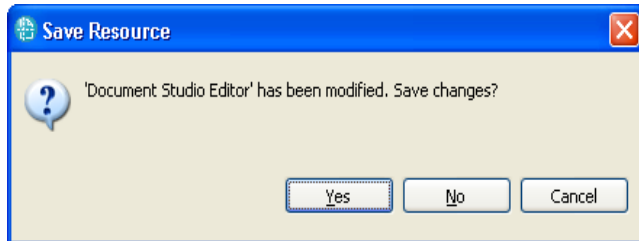


Figure 55

Unless you cancel the save the document generation process will start

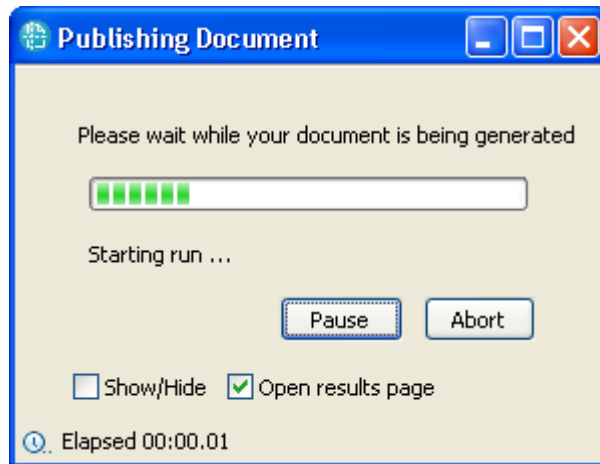


Figure 56

Once finished a window will be displayed allowing you to view/save the results

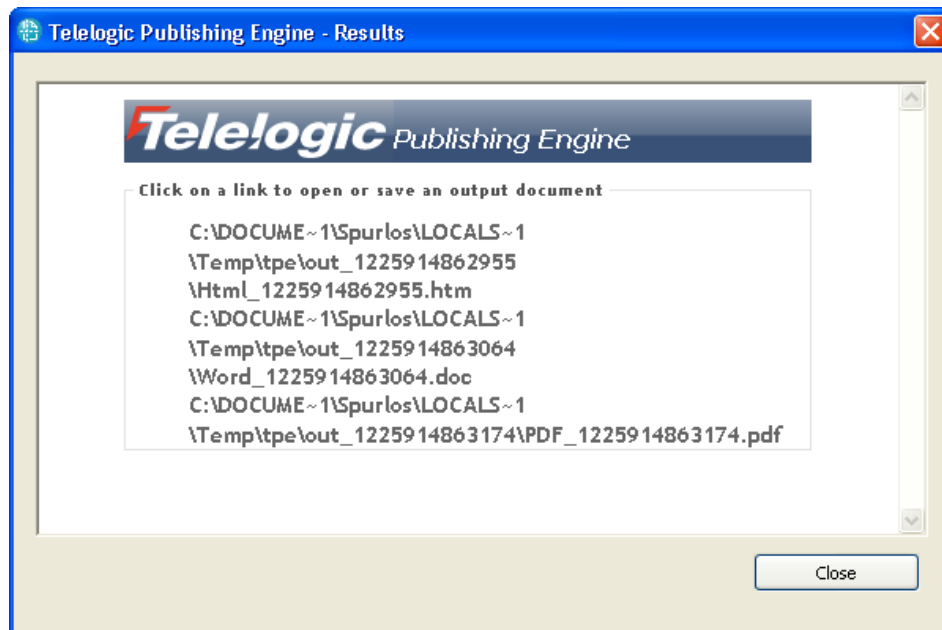


Figure 57

Appendix: Notices

This information was developed for products and services offered in the U.S.A. IBM may not offer the products, services, or features discussed in this document in other countries. Consult your local IBM representative for information on the products and services currently available in your area. Any reference to an IBM product, program, or service is not intended to state or imply that only that IBM product, program, or service may be used. Any functionally equivalent product, program, or service that does not infringe any IBM intellectual property right may be used instead. However, it is the user's responsibility to evaluate and verify the operation of any non-IBM product, program, or service.

IBM may have patents or pending patent applications covering subject matter described in this document. The furnishing of this document does not grant you any license to these patents. You can send written license inquiries to:

IBM Director of Licensing
IBM Corporation
North Castle Drive
Armonk, NY 10504-1785
U.S.A.

For license inquiries regarding double-byte character set (DBCS) information, contact the IBM Intellectual Property Department in your country or send written inquiries to:

IBM World Trade Asia Corporation
Licensing
2-31 Roppongi 3-chome, Minato-ku
Tokyo 106-0032, Japan

The following paragraph does not apply to the United Kingdom or any other country where such provisions are inconsistent with local law: INTERNATIONAL BUSINESS MACHINES CORPORATION PROVIDES THIS PUBLICATION "AS IS" WITHOUT WARRANTY OF ANY KIND, EITHER EXPRESS OR IMPLIED, INCLUDING, BUT NOT LIMITED TO, THE IMPLIED WARRANTIES OF NON-INFRINGEMENT, MERCHANTABILITY OR FITNESS FOR A PARTICULAR PURPOSE. Some states do not allow disclaimer of express or implied warranties in certain transactions. Therefore, this statement may not apply to you.

This information could include technical inaccuracies or typographical errors. Changes are periodically made to the information herein; these changes will be incorporated in new editions of the publication. IBM may make

improvements and/or changes in the product(s) and/or the program(s) described in this publication at any time without notice.

Any references in this information to non-IBM Web sites are provided for convenience only and do not in any manner serve as an endorsement of those Web sites. The materials at those Web sites are not part of the materials for this IBM product and use of those Web sites is at your own risk.

IBM may use or distribute any of the information you supply in any way it believes appropriate without incurring any obligation to you.

Licensees of this program who wish to have information about it for the purpose of enabling: (i) the exchange of information between independently created programs and other programs (including this one) and (ii) the mutual use of the information which has been exchanged, should contact:

Intellectual Property Dept. for Rational Software
IBM Corporation
1 Rogers Street
Cambridge, Massachusetts 02142
U.S.A.

Such information may be available, subject to appropriate terms and conditions, including in some cases, payment of a fee.

The licensed program described in this document and all licensed material available for it are provided by IBM under terms of the IBM Customer Agreement, IBM International Program License Agreement or any equivalent agreement between us.

Any performance data contained herein was determined in a controlled environment. Therefore, the results obtained in other operating environments may vary significantly. Some measurements may have been made on development-level systems and there is no guarantee that these measurements will be the same on generally available systems. Furthermore, some measurements may have been estimated through extrapolation. Actual results may vary. Users of this document should verify the applicable data for their specific environment.

Information concerning non-IBM products was obtained from the suppliers of those products, their published announcements or other publicly available sources. IBM has not tested those products and cannot confirm the accuracy of performance, compatibility or any other claims related to non-IBM products. Questions on the capabilities of non-IBM products should be addressed to the suppliers of those products.

This information contains examples of data and reports used in daily business operations. To illustrate them as completely as possible, the examples include the names of individuals, companies, brands, and products. All of these

names are fictitious and any similarity to the names and addresses used by an actual business enterprise is entirely coincidental.

If you are viewing this information softcopy, the photographs and color illustrations may not appear.

Trademarks

IBM, the IBM logo, ibm.com, Telelogic, and Telelogic DOORS are trademarks or registered trademarks of International Business Machines Corporation in the United States, other countries, or both. These and other IBM trademarked terms are marked on their first occurrence in this information with the appropriate symbol (® or ™), indicating US registered or common law trademarks owned by IBM at the time this information was published. Such trademarks may also be registered or common law trademarks in other countries. A current list of IBM trademarks is available on the Web at www.ibm.com/legal/copytrade.html.

Microsoft, Windows, Windows 2003, Windows XP, Windows Vista and/or other Microsoft products referenced herein are either trademarks or registered trademarks of Microsoft Corporation.

Java and all Java-based trademarks and logos are trademarks of Sun Microsystems, Inc. in the United States, other countries, or both.

Other company, product or service names may be trademarks or service marks of others.