

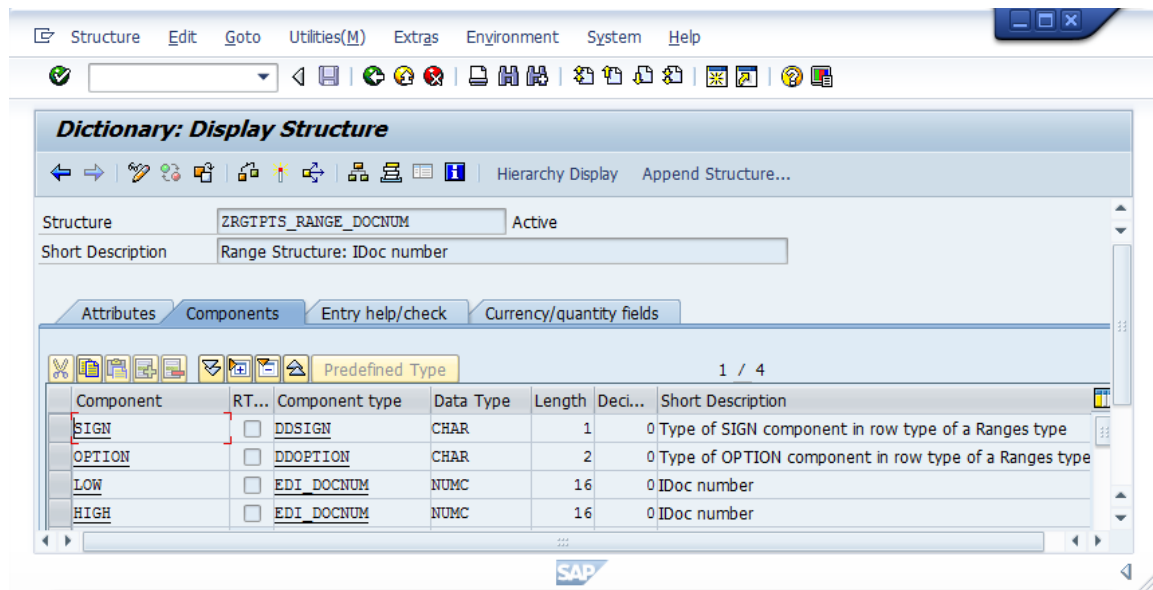
## 1. Overview

Function name is not important – the name can be configured in GHTester on the physical transport.

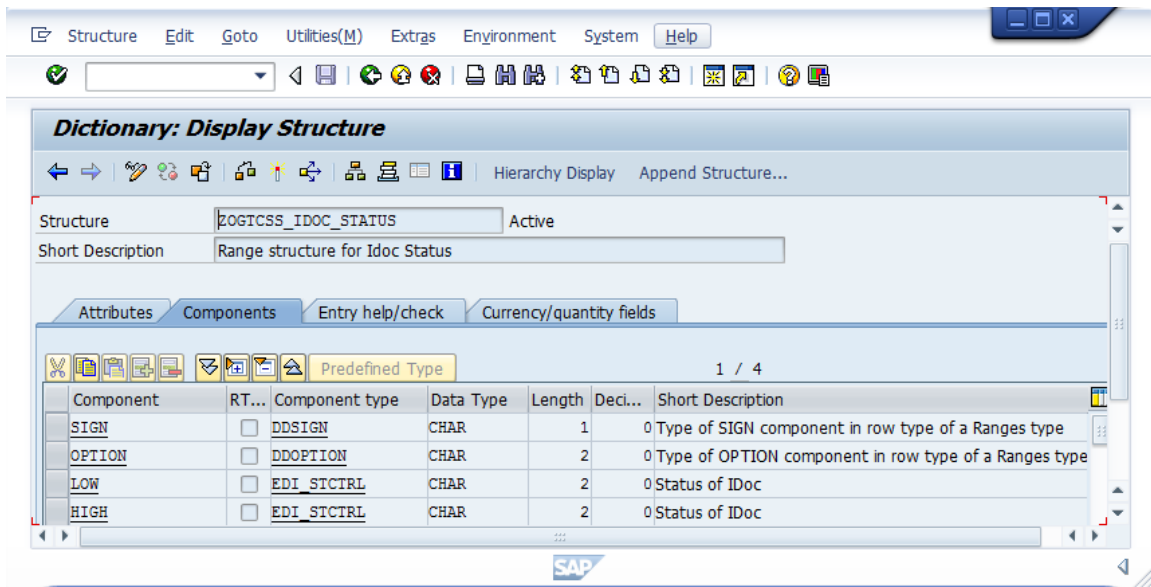
## 2. Create Parameter Structures

In SE11, create the structures below using the files in <RIT Installation root>/tools/SAP/structures.

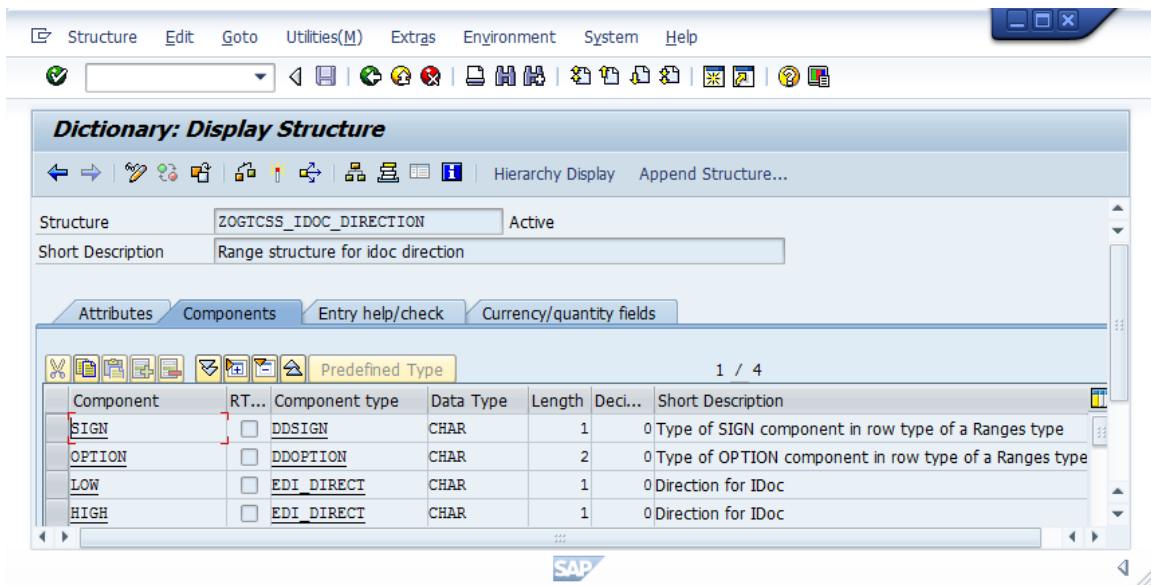
ZRGTPPTS\_RANGE\_DOCNUM



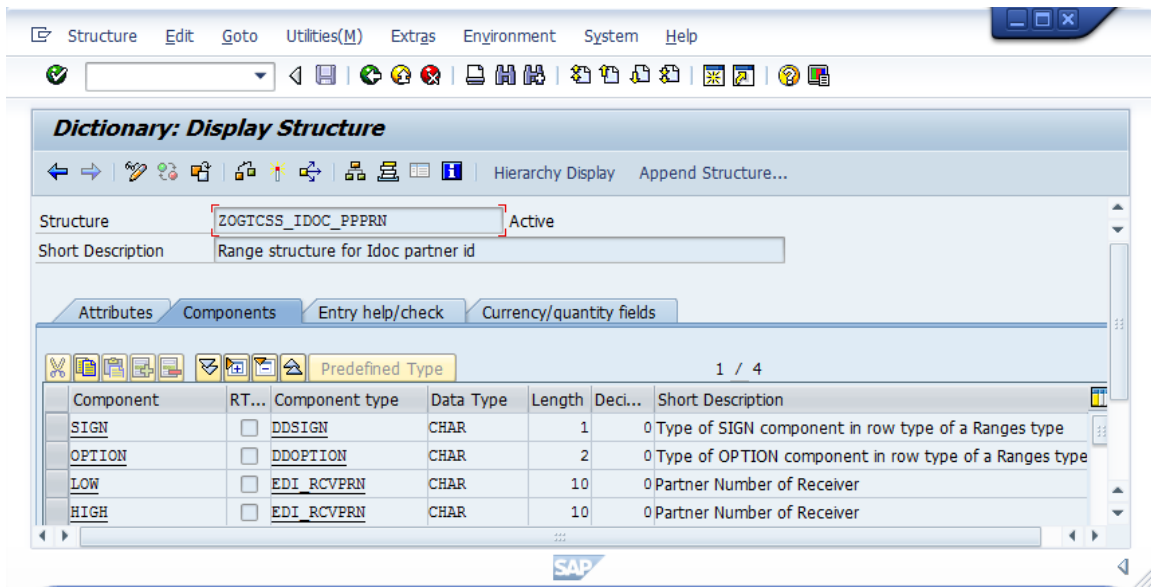
## ZOGTCSS\_IDOC\_STATUS



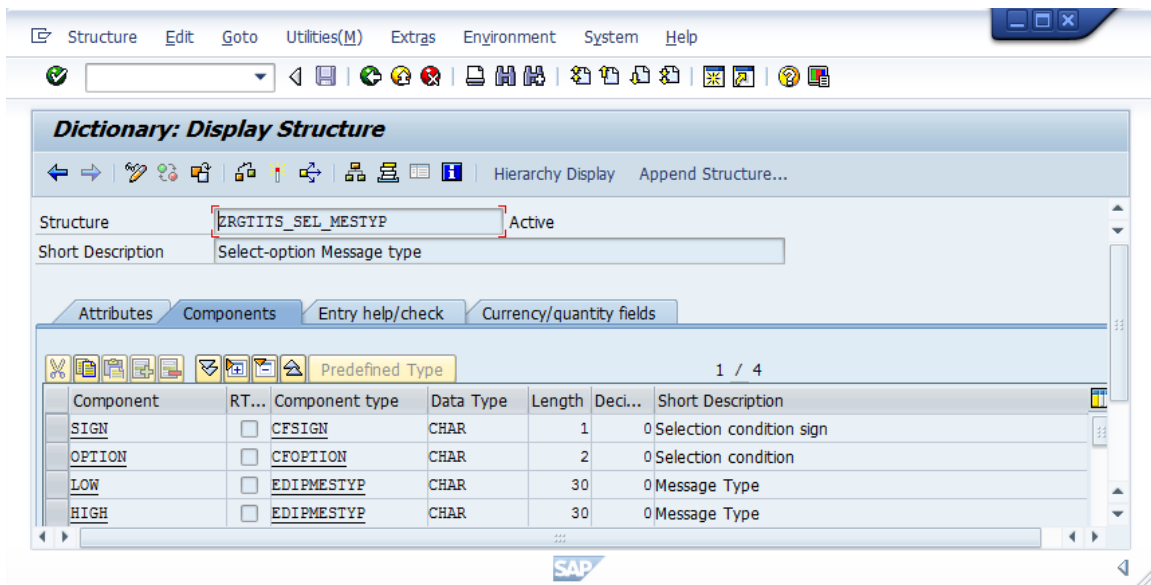
## ZOGTCSS\_IDOC\_DIRECTION



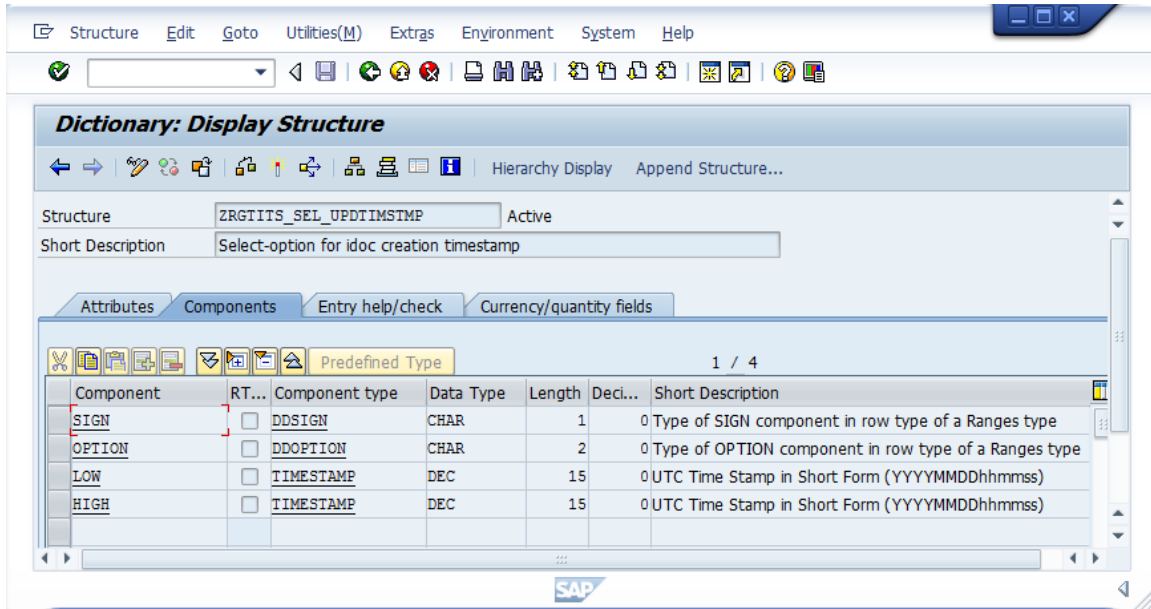
## ZOGTCSS\_IDOC\_PPPRN



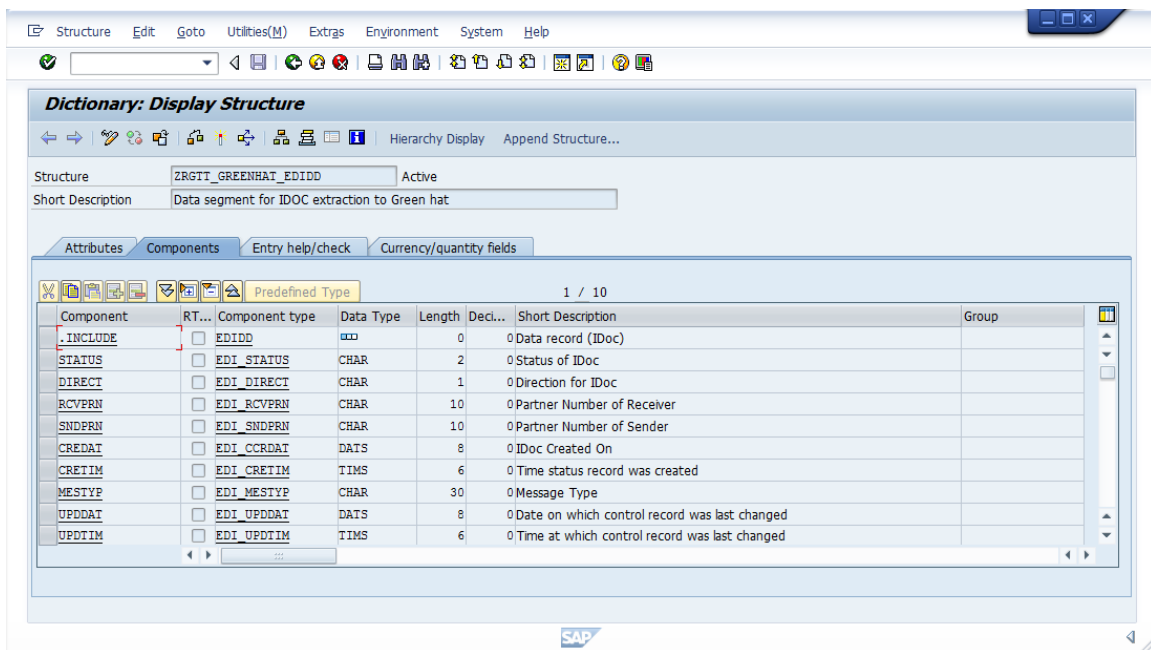
## ZRGITIS\_SEL\_MESTYP



## ZRGTTT\_SEL\_UPDTIMSTMP



## ZRGTT\_GREENHAT\_EDIDD

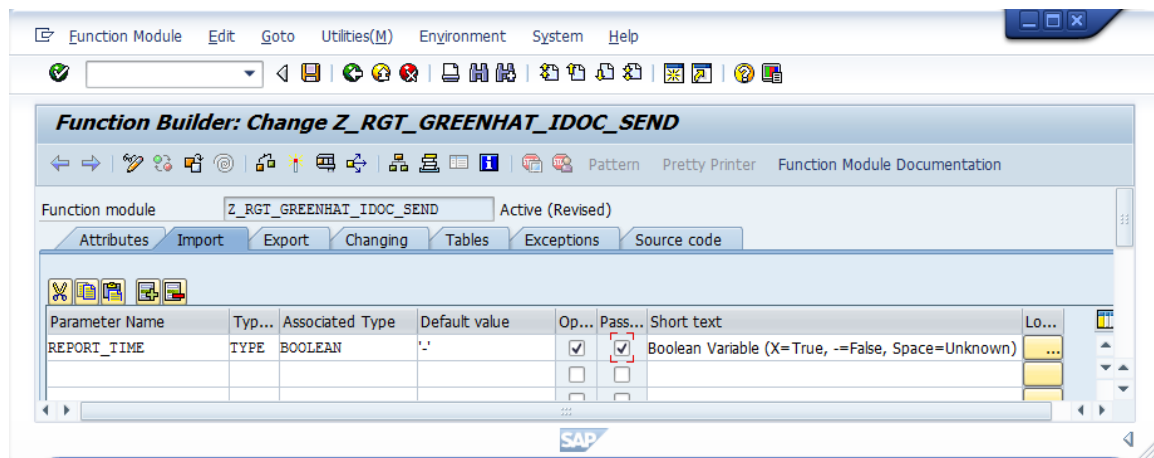


## Function Source

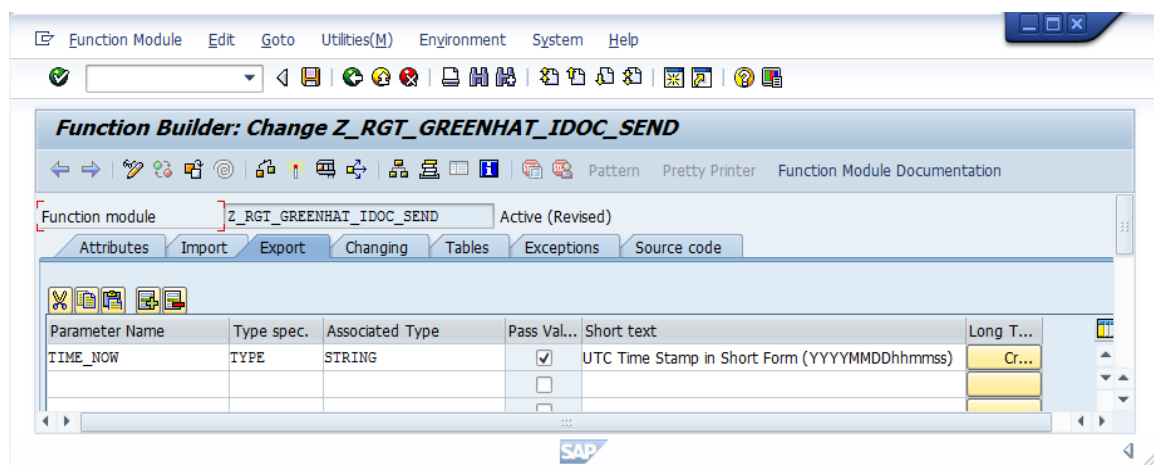
In SE37, create a new function module.

Paste in the source from <RIT Installation root>/tools/SAP/Z\_RGT\_GREENHAT\_IDOC\_SEND.txt.

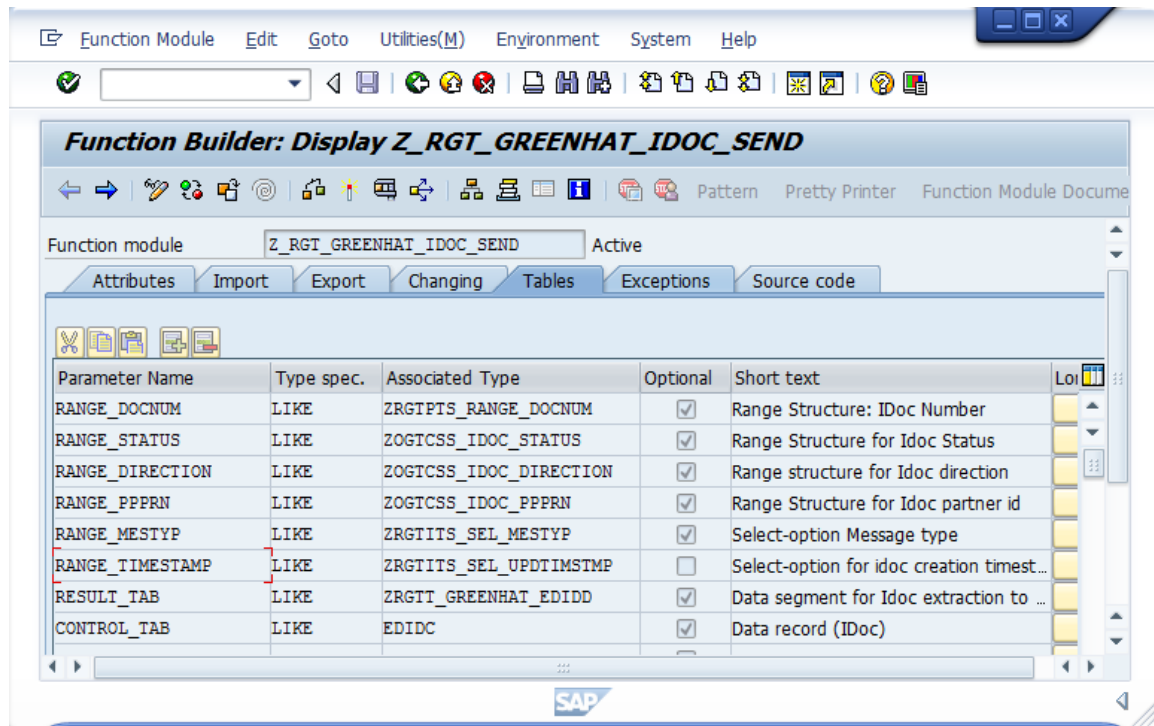
Import parameters should be pasted from 'Import Parameters.txt', and marked as 'Optional' and 'Pass Value', as below:



Export parameters should be pasted from 'Export Parameters.txt' and marked as 'Pass Value' as below:



The ABAP Table Parameters should appear as below:



In order to be accessible by RIT, the function module must be marked as remote enabled:

