

# *IBM Rational Tau*

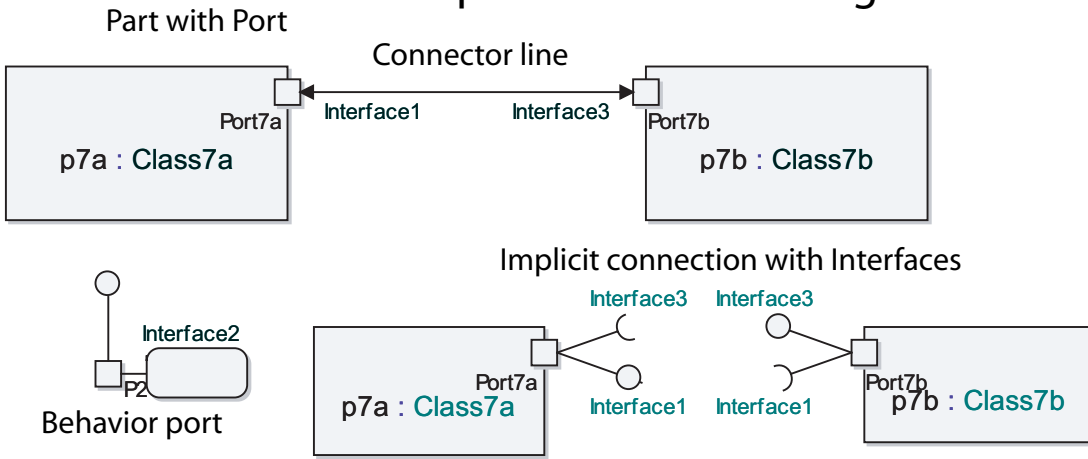
## *UML Quick Reference*

Licensed Materials – Property of IBM

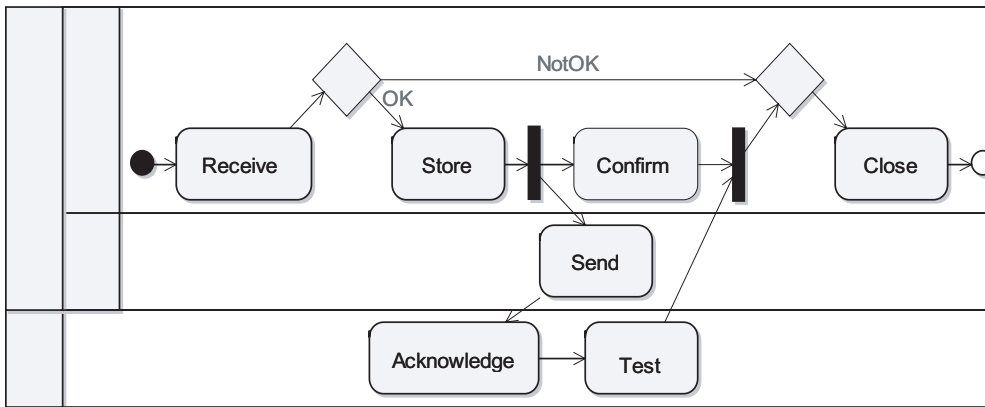
© Copyright IBM Corporation 2002, 2009. All Rights Reserved

U.S. Government Users Restricted Rights: Use, duplication or disclosure restricted by  
GSA ADP Schedule Contract with IBM Corp.

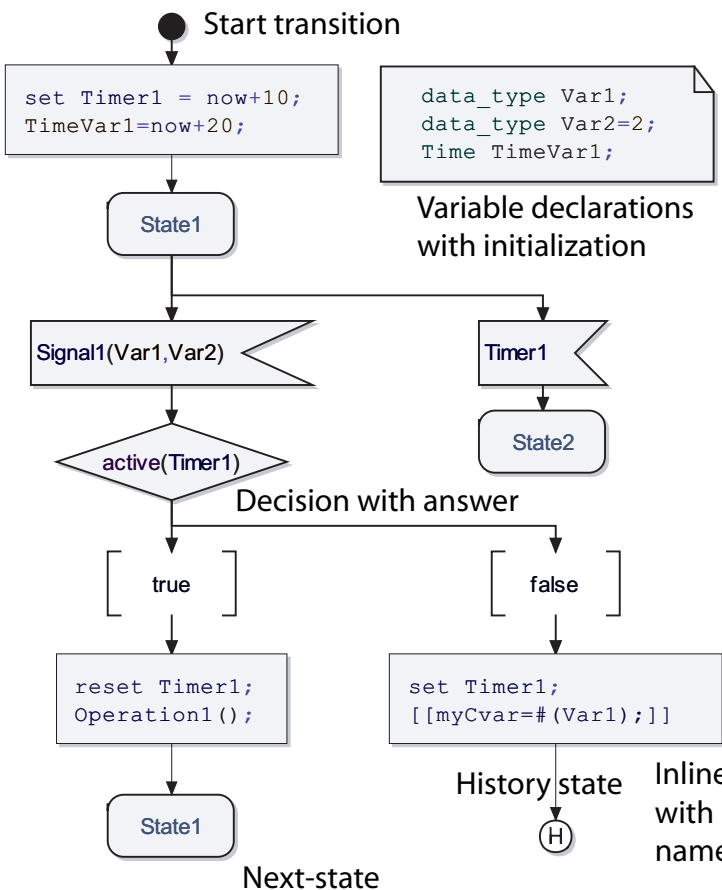
# Composite Structure Diagram



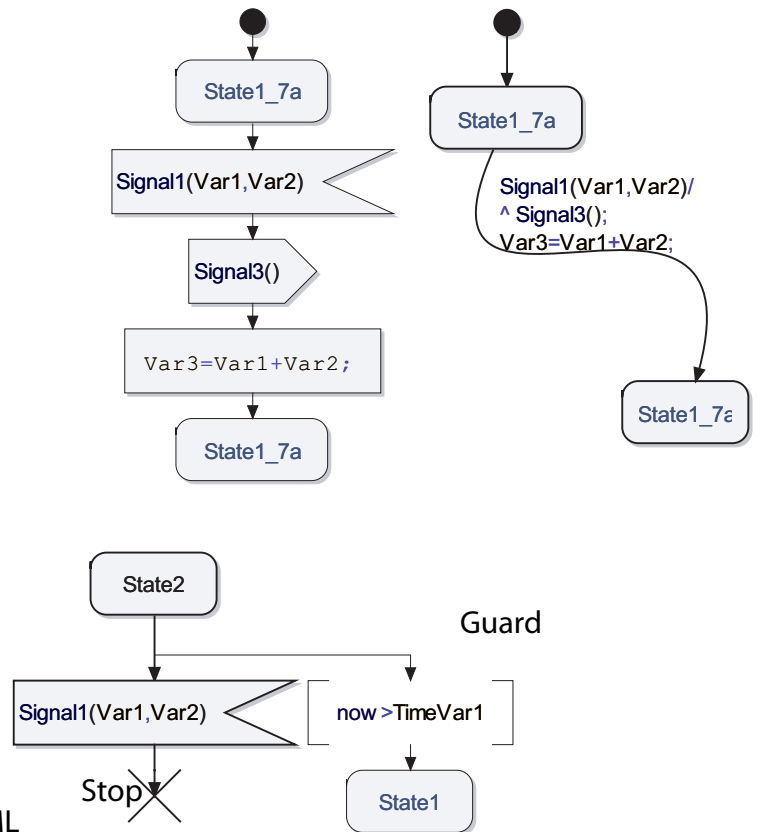
## Activity Diagram



## State Machine Diagram



## Transition-oriented State-oriented

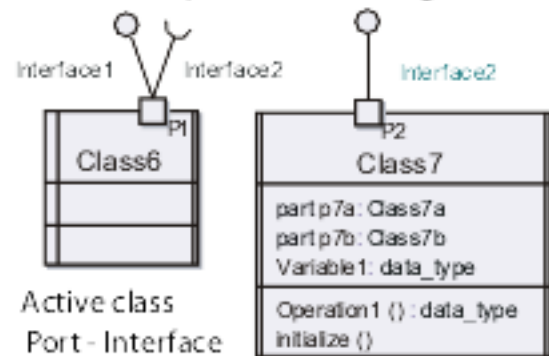


## Package Diagram

Package with import dependency



## Component Diagram



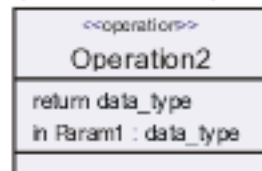
## Deployment Diagram

Configuration build

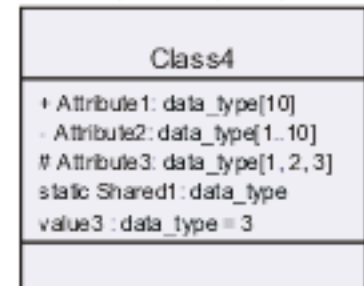


## Class Diagram

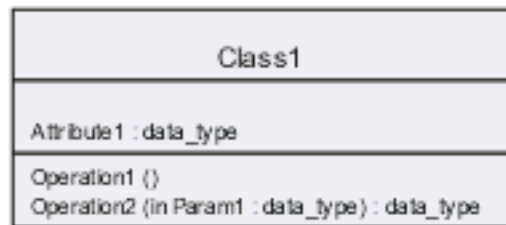
Operation with parameters



Attribute  
Visibility, Multiplicity



Passive class  
with attributes and operations



data\_type Operation2( in data\_type Param1 ) ;

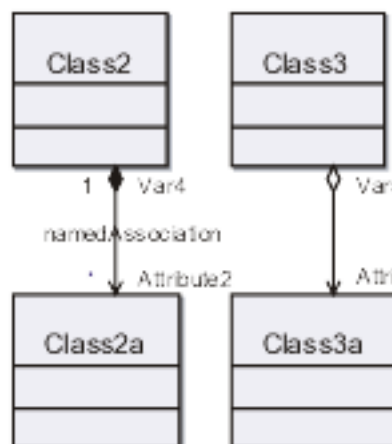
```

/* Local type declarations */
syntype data_type = Integer;
const Integer value1=1;
const data_type value2=2;
class Class1 {
    data_type Attribute1;
    void Operation1();
    data_type Operation2 ( in data_type Param1);
}
  
```

```

class Class4 {
    public data_type [10] Attribute1;
    private data_type [1..10] Attribute2;
    protected data_type [1, 2, 3] Attribute3;
    static data_type Shared1;
    const data_type value3=3;
}
  
```

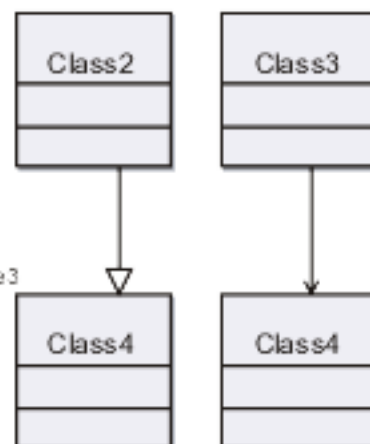
Association - Composition



```

class Class2 {
    part Class2a [*] Attribute2;
}
class Class3 {
    shared Class3a Attribute3;
}
  
```

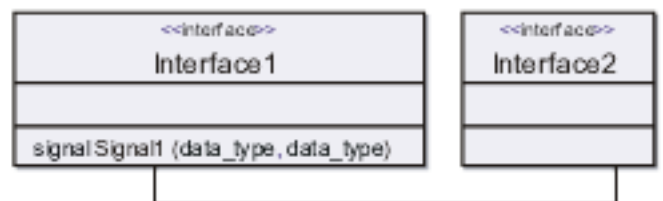
Inheritance - Dependency



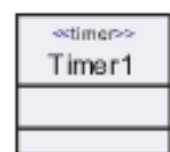
```

class Class2 : Class4 {
}
class Class3 dependency to Class4 {
}
  
```

Interface with signal - Associated interfaces



Timer and default duration



timer Timer1=5;

## Text Diagram

data\_type Operation1()

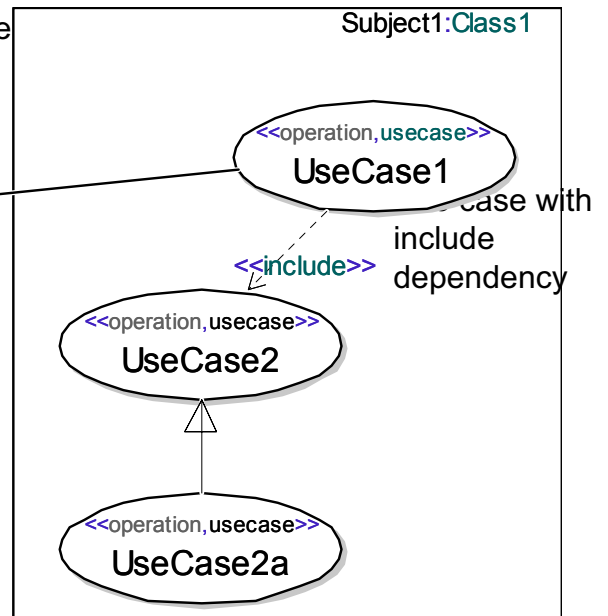
```
{
Integer i;
Integer j=10;
for(i=0;i<j;i=i+1)
    j=j-1;
return j;
}
```

Subject frame with type

Actor - Use case  
(Performance relation)

Generalization  
between Use cases

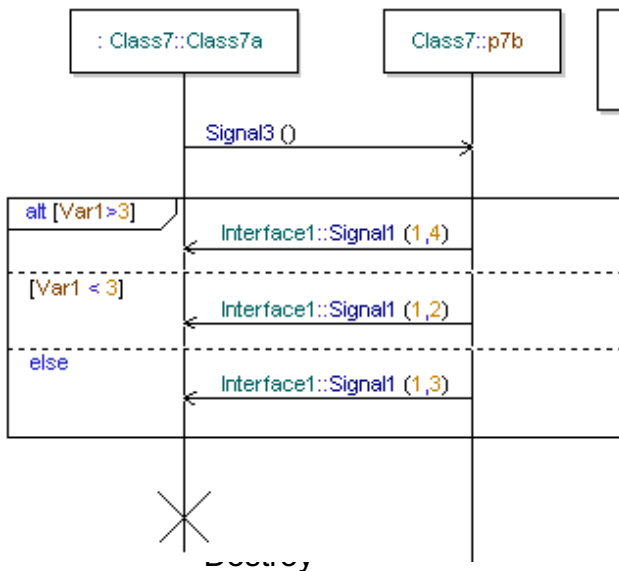
## Use Case Diagram



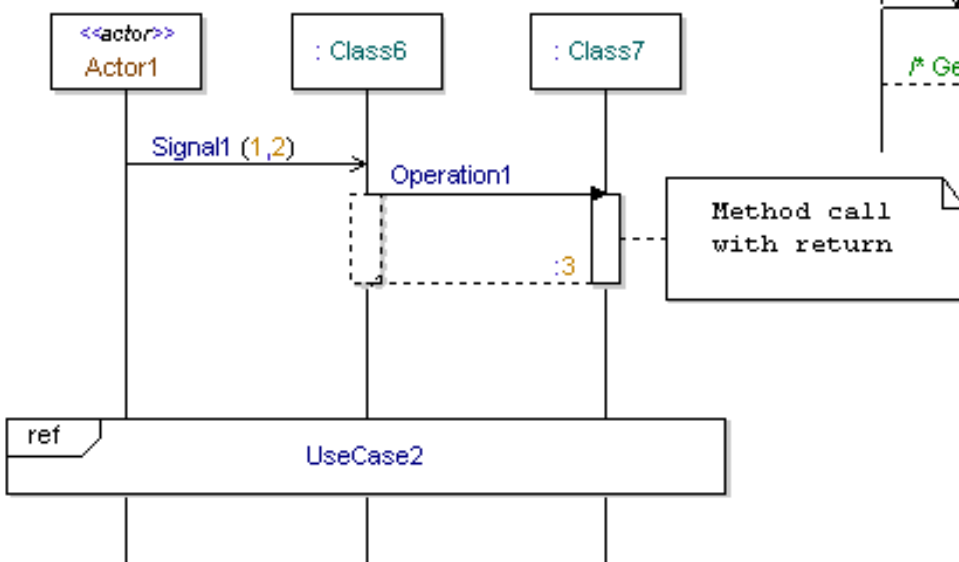
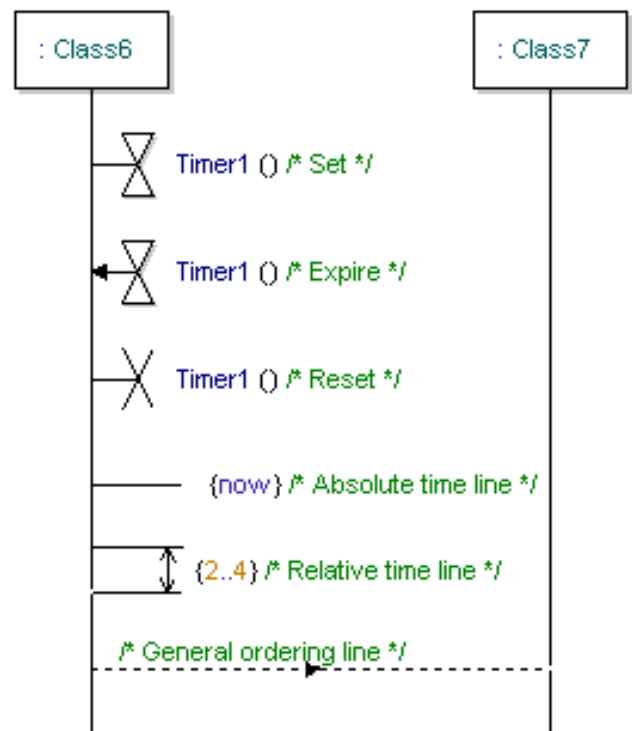
## Sequence Diagram

Lifeline,  
typed

Lifeline,  
named



Timer and time line



Referenced  
Use case