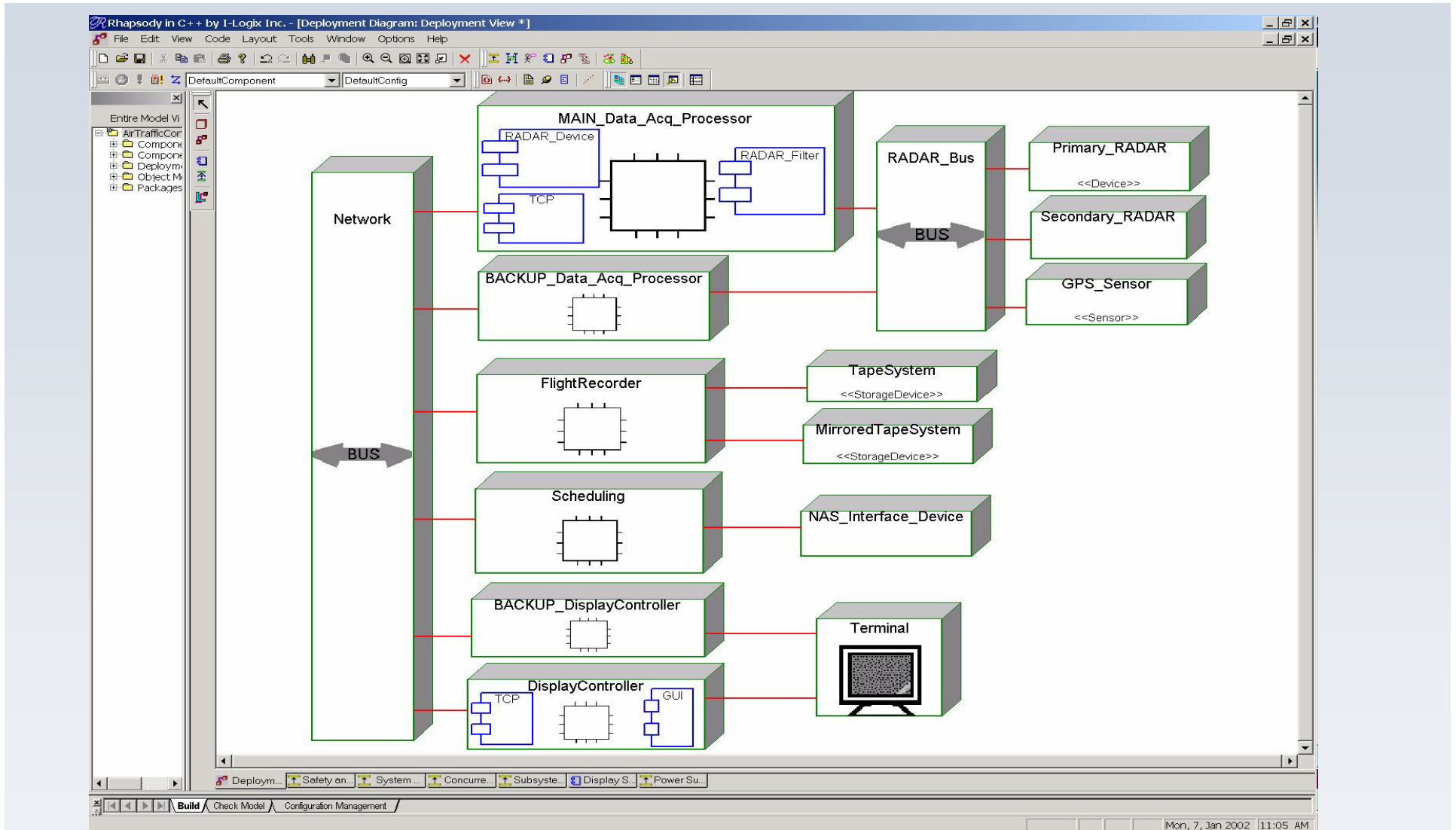
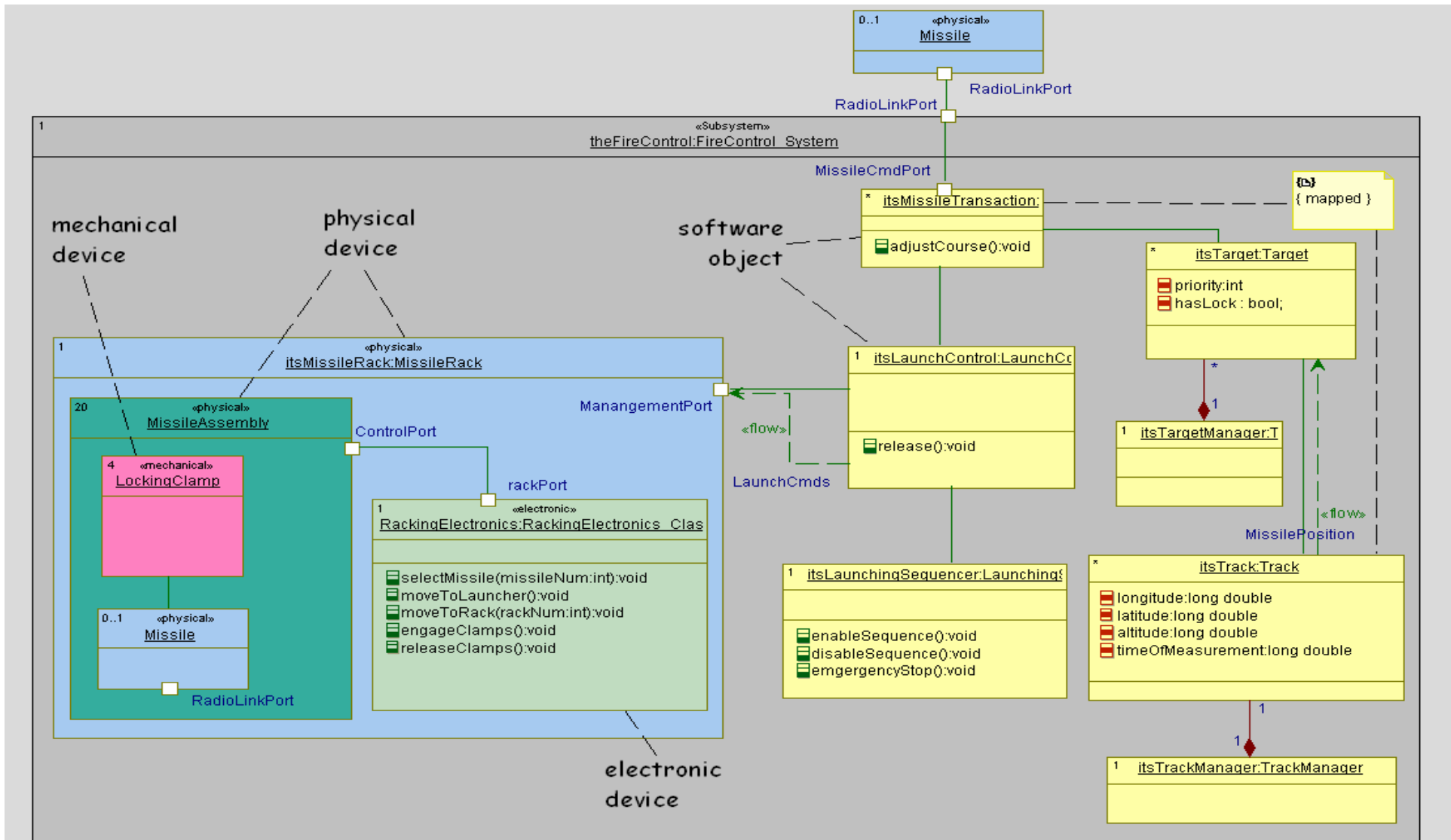


Deployment Architecture



Deployment via Class Diagram



Deployment: Detailing Electronic Interface

Object : RackingElectronics in MissileRack

General | Attributes | Operations | Ports | Relations | Tags | Properties

Name	Visibility	Return Type
selectMissile	Public	void
moveToLauncher	Public	void
moveToRack	Public	void
engageClamps	Public	void
releaseClamps	Public	void

Primitive Operation : moveToRack in RackingElectronics_Class

General | Implementation | Relations | Tags | Properties

Local

InterfaceType	Port Mapped
PortAddress	0010:AF14 - 0010:AF17
ValueType	32-bit Integer

Tags defining details of Electronic interface for moveToRack(rackNum: int) service

Quick Add

Name: Value: Add

Locate OK Apply

Note: Tags are used to specify the interfaces Between the electronic and software elements. We will need to define a standard set of tags To use here.

