

Rational Integration Tester



Reference Guide for Email

Version 8.0.0

Note

Before using this information and the product it supports, read the information in “Notices” on page 12.

This edition applies to version 8.0.0 of Rational Integration Tester and to all subsequent releases and modifications until otherwise indicated in new editions.

© **Copyright IBM Corporation 2001, 2012.**

US Government Users Restricted Rights – Use, duplication or disclosure restricted by GSA ADP Schedule Contract with IBM Corp.

Contents

About this Publication	iv
Intended Audience	v
Scope	v
Typographical Conventions	v
Contacting IBM Support	v
Email Transport	1
Creating the Email Transport	2
Configuring the Email Transport	4
Email Messages	7
Overview	8
Publishing	9
Subscribing	10
Glossary	11
Notices	12
Trademarks and service marks	15

About this Publication

Contents

Intended Audience

Scope

Typographical Conventions

Contacting IBM Support

This guide describes how to configure and use the Email transport in IBM® Rational® Integration Tester, which lets users send (Publish) and receive (Subscribe) email messages within Rational Integration Tester test artefacts.

Intended Audience

This document intended to be read by those with a fair understanding and exposure to the concepts involved in both testing and development and in enterprise integration.

Scope

This document discusses the configuration and use of the Email transport in IBM Rational Integration Tester. Information about other features and functionality in Rational Integration Tester is beyond the scope of this document.

If you wish to familiarize yourself with Rational Integration Tester, please refer to the online help or any of the documentation that is provided with the product.

Typographical Conventions

The following typographical conventions are observed throughout this document:

Type	Usage
Constant Width	Program output, listings of code examples, file names, commands, options, configuration file parameters, and literal programming elements in running text.
<i>Italic</i>	Document title names in statements that refer you to other documents. Also used to highlight concepts when first introduced.
Bold	Menu items in graphical user interface windows (such as Microsoft Windows-based or UNIX X Window applications) from which you select options or execute macros and functions. Submenus and options of a menu item are indicated with a “greater than” sign, such as Menu > Submenu or Menu > Option .

Contacting IBM Support

To contact IBM Support, see: www.ibm.com/contact/us/en/

Email Transport

Contents

Creating the Email Transport

Configuring the Email Transport

Rational Integration Tester enables the configuration of an IMAP-based email server for the purpose of sending and receiving email messages within tests. Using the publish and subscribe actions in Rational Integration Tester, it is possible to send messages to and receive messages from a configured mail box on an existing mail server.

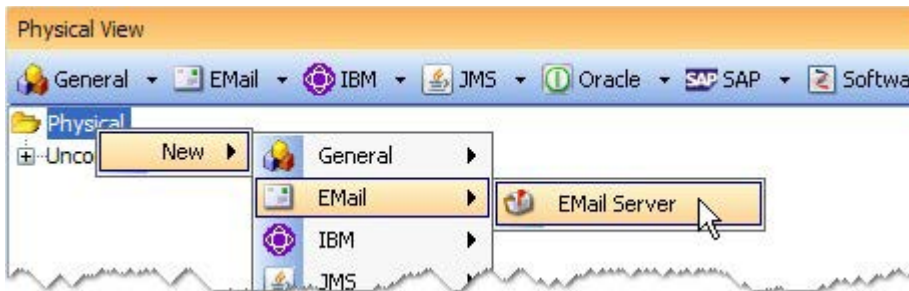
This chapter provides an overview of how the Email transport can be used and how to configure it.

1.1 Creating the Email Transport

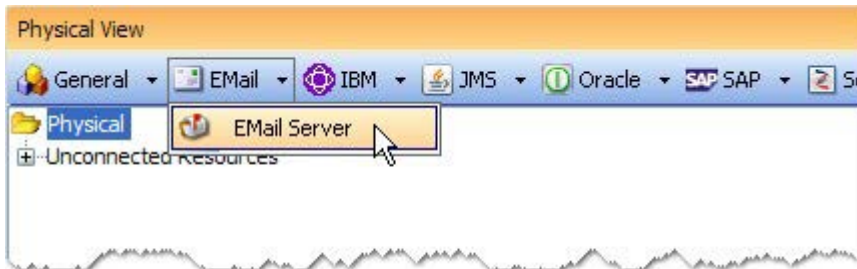
An email transport is created when you create an Email Server resource in the Physical View of Rational Integration Tester's Architecture School.

In Architecture School's Physical View, you can create a new Email Server in two ways:

- Right-click on the **Physical** folder and select **New > EMail > EMail Server** from the context menu.



- Click anywhere within the physical view and select **EMail > EMail Server** from the main component toolbar.

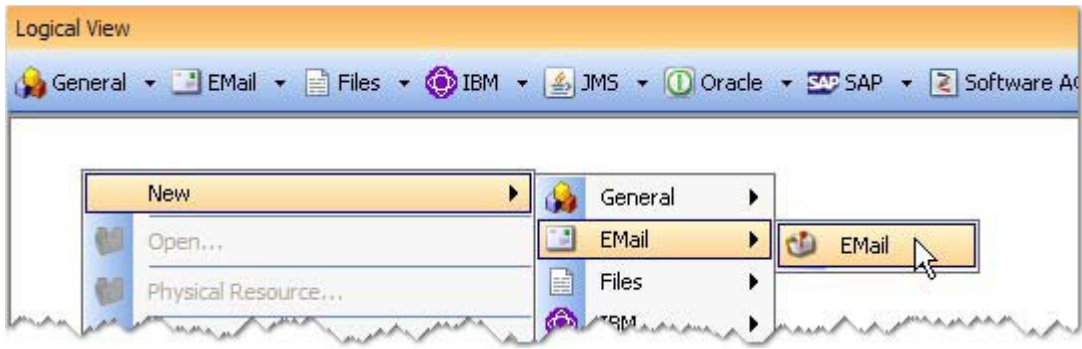


Each Email Server resource represents a unique email transport that can be selected and configured later on.

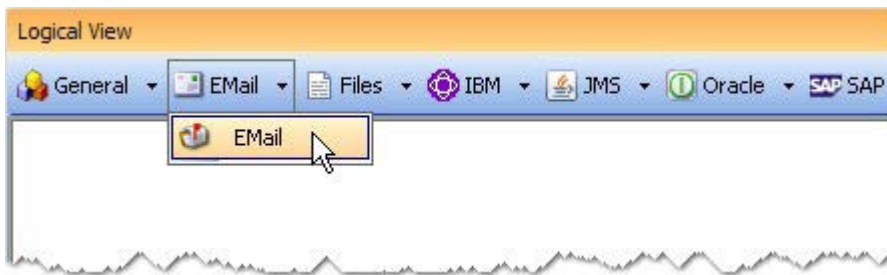
NOTE: Before the email transport can be utilized, it must be bound to a logical Email resource, created in the Logical View of Rational Integration Tester's Architecture School.

In Architecture School's Logical View, you can create a new Email resource in two ways:

- Right-click on an existing service component or on the blank drawing palette and select **New > EMail > EMail** from the context menu.



- Click to select an existing service component or the blank drawing palette and select **EMail > EMail** from the main component toolbar.

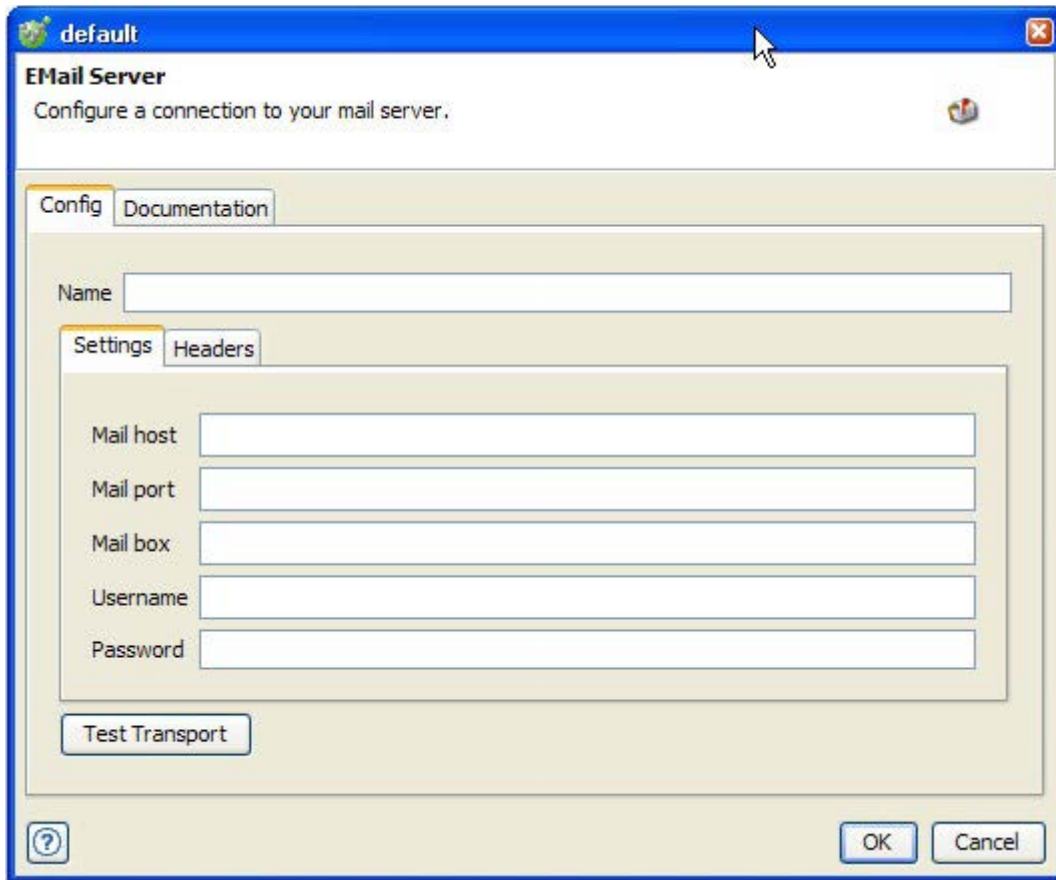


Logical components can be bound to physical resources in the Environment Editor, or you can do so directly from the Logical View by right-clicking the desired component and selecting the desired physical resource from **Set Binding in > [Environment] >...**

See the *IBM Rational Integration Tester Reference Guide* for more information about environments and how to bind logical and physical resources.

1.2 Configuring the Email Transport

The email transport provides the ability to send and receive email messages from within Rational Integration Tester. To configure a transport, double-click the appropriate Email Server resource in Architecture School's Physical View.



To change the name of the transport, simply enter the desired name in the **Name** field.

1.2.1 Email Settings

The options under the **Settings** tab allow the user to define the details of the actual mail server that will be used by the transport.

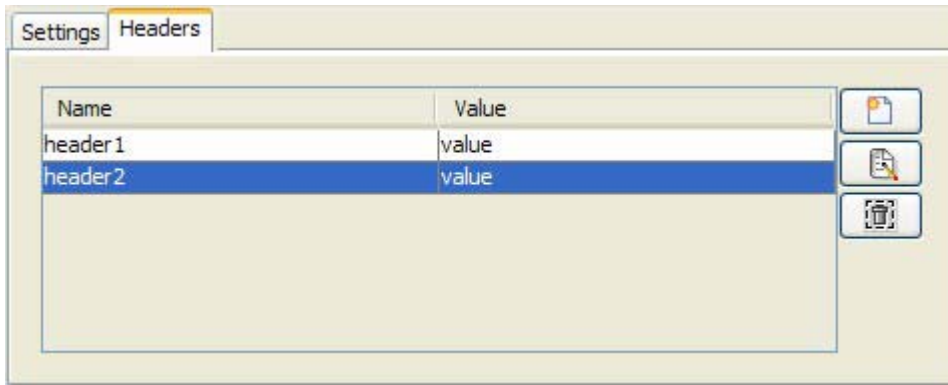
A screenshot of a software interface for email settings. It features a tabbed window with two tabs: 'Settings' (which is active and highlighted) and 'Headers'. Below the tabs, there are five labeled input fields stacked vertically: 'Mail host', 'Mail port', 'Mail box', 'Username', and 'Password'. Each label is to the left of a white rectangular text box with a thin border.




The configuration options for the transport **Settings** tab are described in the following table:

Mail host	The host name or IP address of the IMAP-based mail server.
Mail port	The optional port on which the mail server is listening for requests.
Mail box	The mailbox on the server where new messages should be delivered and from which messages should be received.
Username	The ID of an email user that has already been configured on the selected server.
Password	The password of the selected email user (Username).

1.2.2 Message Headers

The settings under the **Headers** tab let you define custom message headers that can be sent with every message.



- Click  to create a new header, then enter the header property name and value in the **New Message Property** dialog.
- Select an existing property and click  to edit it.
- Select an existing property and click  to delete it.

Email Messages

Contents

Overview

Publishing

Subscribing

This chapter provides information about using the Email transport to send (publish) and receive (subscribe) email messages.

2.1 Overview

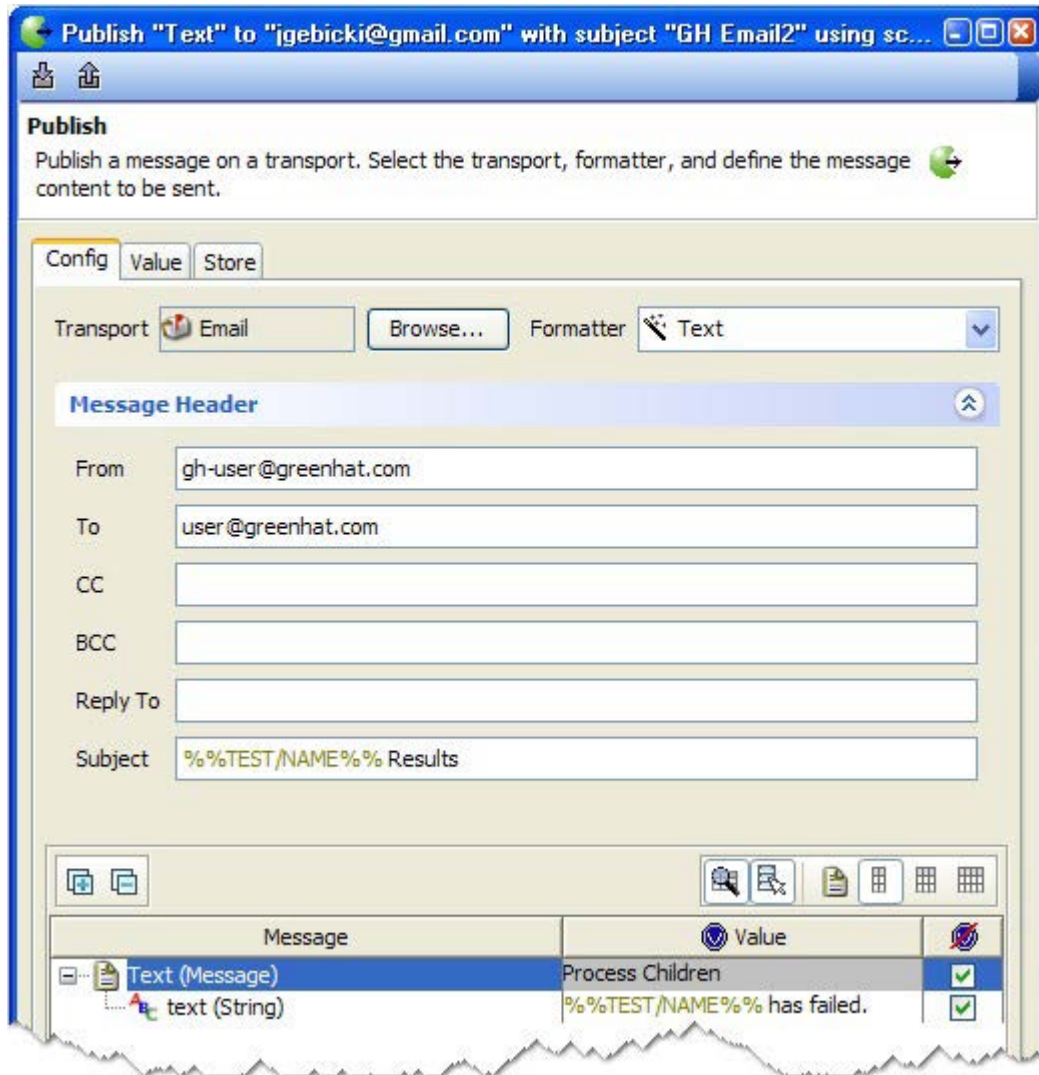
In Rational Integration Tester tests, the email transport can be used like an external notification system, delivering pertinent information (exceptions, test status, and so on) to interested users by means of email.

The standard field options (filtering, validation, tag storage) are available when publishing or subscribing with the email transport. For more information, refer to *IBM Rational Integration Tester Reference Guide*.

- [Publishing](#)
- [Subscribing](#)

2.2 Publishing

You can use the email transport in a publish action to send a message to any valid email address.

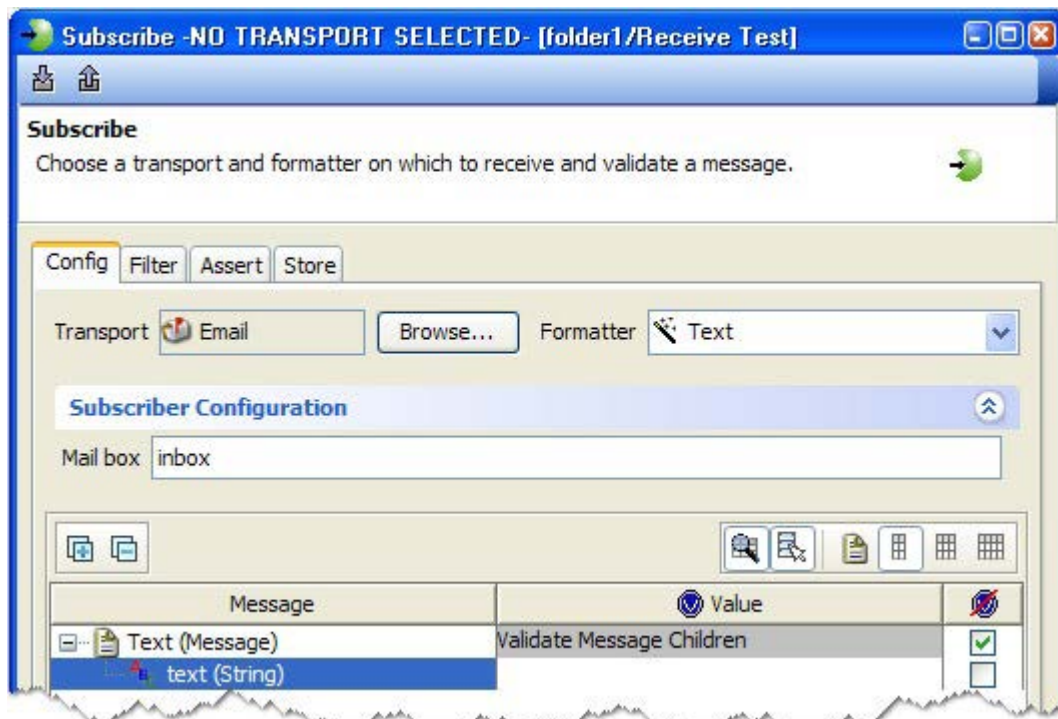


After specifying the transport and message formatter to be used, configure the standard email message options (From, To, and so on), then configure the body of the message contents as desired (for example, using various user-defined or system tags to relay the status of a test).

For more information about working with messages, refer to *IBM Rational Integration Tester Reference Guide*.

2.3 Subscribing

You can use the email transport in a subscribe action to read messages from a specified mail box to which the configured user has access.



After specifying the transport and message formatter, enter the name of the mail box to read in the **Mail box** field.

The filter, validate, and store actions can be used with the email transport in the same way as with other transports.

For more information about working with messages, refer to *IBM Rational Integration Tester Reference Guide*.

Glossary

The following table below lists some of the key terms used in this document, and provides a description of each.

Term	Description
Field	A bit of data constituent to a message. Most fields are scalar and therefore unitary, equivalent to data attributes. Vector fields are an aggregation of fields both scalar and vector, and are usually referred to as Messages. See also Message.
Message	A unit of information made up of a header consisting of meta-information and a body consisting of the message data.
Host	The computer on which a software process runs.
Publisher-Subscriber	A messaging paradigm whereby a messaging network consists of Publishers and Subscribers.
Transport	Informally, the messaging software in use. For instance, TIBCO Rendezvous, TIBCO ActiveEnterprise, IBM WebSphere® MQ (JMS).
Publishing	Making a message (data) available on a message channel.
Subscribing	Receiving a stream of messages (data) on a given message channel.
Server	A host computer on a network shared by more than one user.

Notices

This information was developed for products and services offered in the U.S.A.

IBM may not offer the products, services, or features discussed in this document in other countries. Consult your local IBM representative for information on the products and services currently available in your area. Any reference to an IBM product, program, or service is not intended to state or imply that only that IBM product, program, or service may be used. Any functionally equivalent product, program, or service that does not infringe any IBM intellectual property right may be used instead. However, it is the user's responsibility to evaluate and verify the operation of any non-IBM product, program, or service.

IBM may have patents or pending patent applications covering subject matter described in this document. The furnishing of this document does not grant you any license to these patents. You can send license inquiries, in writing, to:

IBM Director of Licensing
IBM Corporation
North Castle Drive
Armonk, NY 10504-1785
U.S.A.

For license inquiries regarding double-byte (DBCS) information, contact the IBM Intellectual Property Department in your country or send inquiries, in writing, to:

Intellectual Property Licensing
Legal and Intellectual Property Law
IBM Japan, Ltd.
1623-14, Shimotsuruma, Yamato-shi
Kanagawa 242-8502 Japan

The following paragraph does not apply to the United Kingdom or any other country where such provisions are inconsistent with local law:

INTERNATIONAL BUSINESS MACHINES CORPORATION PROVIDES THIS PUBLICATION "AS IS" WITHOUT WARRANTY OF ANY KIND, EITHER EXPRESS OR IMPLIED, INCLUDING, BUT NOT LIMITED TO, THE IMPLIED WARRANTIES OF NON-INFRINGEMENT,

MERCHANTABILITY OR FITNESS FOR A PARTICULAR PURPOSE. Some states do not allow disclaimer of express or implied warranties in certain transactions, therefore, this statement may not apply to you.

This information could include technical inaccuracies or typographical errors. Changes are periodically made to the information herein; these changes will be incorporated in new editions of the publication. IBM may make improvements and/or changes in the product(s) and/or the program(s) described in this publication at any time without notice.

IBM may use or distribute any of the information you supply in any way it believes appropriate without incurring any obligation to you.

Licensees of this program who wish to have information about it for the purpose of enabling: (i) the exchange of information between independently created programs and other programs (including this one) and (ii) the mutual use of the information which has been exchanged, should contact:

IBM United Kingdom Limited
Intellectual Property Law
Hursley Park
Winchester
SO21 2JN
Hampshire
United Kingdom

Such information may be available, subject to appropriate terms and conditions, including in some cases, payment of a fee.

The licensed program described in this document and all licensed material available for it are provided by IBM under terms of the IBM Customer Agreement, IBM International Program License Agreement or any equivalent agreement between us.

Any performance data contained herein was determined in a controlled environment. Therefore, the results obtained in other operating environments may vary significantly. Some measurements may have been made on development-level systems and there is no guarantee that these measurements will be the same on generally available systems. Furthermore, some measurements may have been estimated through extrapolation. Actual results may vary. Users of this document should verify the applicable data for their specific environment.

Information concerning non-IBM products was obtained from the suppliers of those products, their published announcements or other publicly available sources. IBM has not tested those products and cannot confirm the accuracy of performance, compatibility or any other claims related to non-IBM products. Questions on the

capabilities of non-IBM products should be addressed to the suppliers of those products.

All statements regarding IBM's future direction or intent are subject to change or withdrawal without notice, and represent goals and objectives only.

This information contains examples of data and reports used in daily business operations. To illustrate them as completely as possible, the examples include the names of individuals, companies, brands, and products. All of these names are fictitious and any similarity to the names and addresses used by an actual business enterprise is entirely coincidental.

COPYRIGHT LICENSE:

This information contains sample application programs in source language, which illustrate programming techniques on various operating platforms. You may copy, modify, and distribute these sample programs in any form without payment to IBM, for the purposes of developing, using, marketing or distributing application programs conforming to the application programming interface for the operating platform for which the sample programs are written. These examples have not been thoroughly tested under all conditions. IBM, therefore, cannot guarantee or imply reliability, serviceability, or function of these programs.

Each copy or any portion of these sample programs or any derivative work, must include a copyright notice as follows:

© (your company name) (year). Portions of this code are derived from IBM Corp. Sample Programs. © Copyright IBM Corporation 2001, 2012.

If you are viewing this information softcopy, the photographs and color illustrations may not appear.

Trademarks and service marks

IBM, the IBM logo, and ibm.com are trademarks or registered trademarks of International Business Machines Corp., registered in many jurisdictions worldwide. Other product and service names might be trademarks of IBM or other companies. A current list of IBM trademarks is available on the Web at “Copyright and trademark information” at www.ibm.com/legal/copytrade.shtml.

Microsoft and Windows are trademarks of Microsoft Corporation in the United States, other countries, or both.

UNIX is a registered trademark of The Open Group in the United States and other countries.

