

IBM XIV Storage System Management Tools  
Version 4.4.0.1

*Release Notes*





---

# Contents

<b>Figures</b> . . . . .	<b>v</b>	UI-262163 . . . . .	12
<b>Release Notes</b> . . . . .	<b>1</b>	UI-262579 . . . . .	12
What's new in Management Tools version 4.4 . . . . .	1	UI-263146 . . . . .	12
Management Tools documentation set . . . . .	7	Known issues. . . . .	12
Specifications . . . . .	8	General. . . . .	12
GUI specifications . . . . .	8	Virtual Appliance installation . . . . .	13
IBM Hyper-Scale Manager specifications . . . . .	9	XIV GUI - Windows only. . . . .	14
Limitations . . . . .	11	Features we would like you to know of . . . . .	14
UI-247041 . . . . .	11	Multi-system configuration . . . . .	14
UI-253185 . . . . .	11	GUI tips . . . . .	23
UI-261561 . . . . .	11	Statistics . . . . .	27
UI-262890 . . . . .	11	IBM Hyper-Scale Mobility, Mirroring and Data Migration . . . . .	28
UI-263821 . . . . .	11	IBM Hyper-Scale Manager . . . . .	30
UI-263912 . . . . .	11	Copyrights . . . . .	31
UI-264320 . . . . .	11	Contacting IBM Support . . . . .	31
XIV GUI Upgrade Notice . . . . .	11	Documentation format. . . . .	32
UI-262093 . . . . .	11	Notices and trademarks . . . . .	32
Fixed issues . . . . .	12		
UI-261796 . . . . .	12	<b>Index</b> . . . . .	<b>35</b>



---

## Figures

1. New Mirrors view . . . . .	2	17. Paste Support Configuration . . . . .	21
2. Configurable idle timeout . . . . .	3	18. Adding a user to multiple systems. . . . .	22
3. Capacity Planning PDF . . . . .	4	19. Adding a user to multiple systems. . . . .	22
4. Mobile device settings and message bar displays . . . . .	5	20. Editing a user on multiple systems. . . . .	23
5. Cross-system Consistency Groups . . . . .	6	21. Recognizing self-encrypting disks . . . . .	23
6. Threshold configuration window. . . . .	6	22. Tooltip explanation . . . . .	24
7. Manage IP Access Groups window . . . . .	7	23. Regional Settings support. . . . .	24
8. Connecting to the IBM Hyper-Scale Manager	15	24. Searching for objects . . . . .	25
9. Upgrading the IBM Hyper-Scale Manager from the GUI. . . . .	15	25. Disabled items tooltip . . . . .	25
10. System selector . . . . .	16	26. The actions menu . . . . .	26
11. Hiding a system . . . . .	17	27. The system view . . . . .	26
12. Tiles view . . . . .	17	28. System balloons . . . . .	27
13. List view . . . . .	18	29. Export to CSV . . . . .	27
14. Connectivity view . . . . .	18	30. Viewing SSD activity . . . . .	27
15. Viewing multiple storage pools with multiple systems . . . . .	19	31. Capacity consumption trending. . . . .	28
16. Copy System Configuration . . . . .	20	32. The Create IBM Hyper-Scale Mobility screen	29
		33. All IBM Hyper-Scale Mobility commands are easily accessible . . . . .	29
		34. Viewing the phase and status at a glance	29



---

## Release Notes

These release notes are for the IBM® XIV® Storage System Management Tools version 4.4.0.1.

### Release date

25 August 2014

### On IBM Hyper-Scale Manager

IBM Hyper-Scale Manager was previously named IBM XIV Multi-System Manager.

### Working with the IBM Hyper-Scale Manager

IBM XIV recommends using the IBM Hyper-Scale Manager and an XIV GUI in Manager mode if you have more than 10 systems.

### Compatibility

XIV GUI 4.4.x is compatible with IBM Hyper-Scale Manager 1.5.x.

### Supported microcode releases

This version supports IBM XIV release 11.5 and all previous IBM XIV releases.

---

## What's new in Management Tools version 4.4

XIV Management Tools version 4.4 introduces the following new features:

### Multi-tenancy

XIV multi-tenancy brings leading flexibility and simplicity to secure management of the data of multiple tenants within an XIV system.

- Secure division and isolation of XIV resources into logical domains among tenants
  - A **domain** represents a subset of system resources (users, pools, hosts/clusters, targets, etc). The domain restricts the resources a user can manage.
- Simple and quick delegation of storage administration permissions by the cloud provider to the tenant administrators
- Exceptional ease of use and flexibility in securely managing multiple tenants
- Easier tracking and reporting of storage domain operations

See the *IBM XIV Storage System Product Overview* for more information.

### Multi-site mirroring

XIV multi-site mirroring features three copies of data and delivers world-class high-availability and disaster recovery, enabling users to comply with business, government, and industry-driven requirements and regulations. It provides:

- Three concurrent copies of the data
- Simple failover and failback, while keeping data mirrored to ensure business continuity





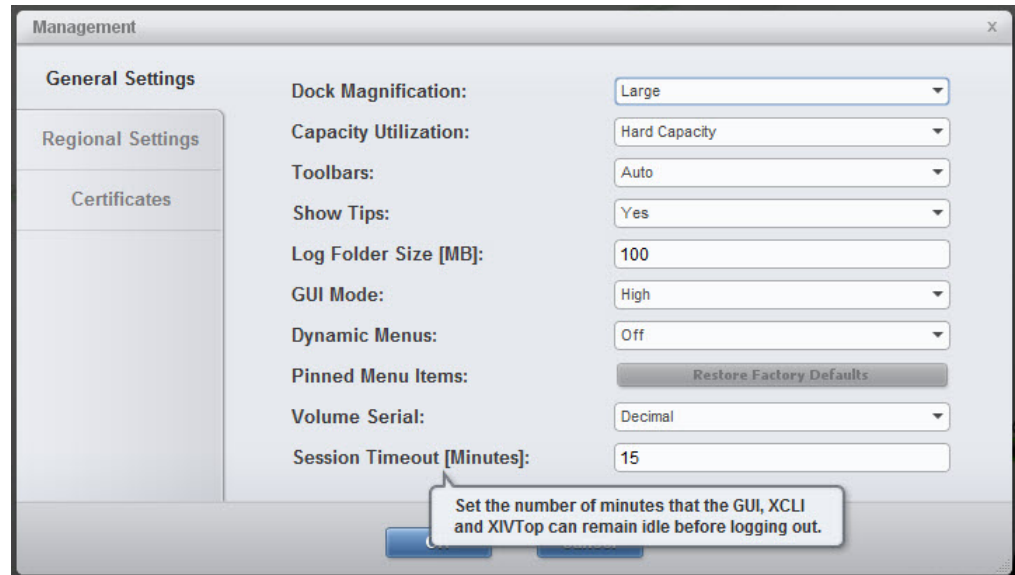


Figure 2. Configurable idle timeout

### Capacity planning - PDF report

The capacity planning PDF report function of the IBM Hyper-Scale Manager provides:

- Capacity utilization report across all XIV systems
- Growth trending and forecasting based on past behavior
- Formatted report with info-graphics and charts

The Capacity planning report helps users to:

- For executives, to assist in evaluating when new storage will be needed
- For storage administrators, to assist in evaluating when current pools and domains will run out of space

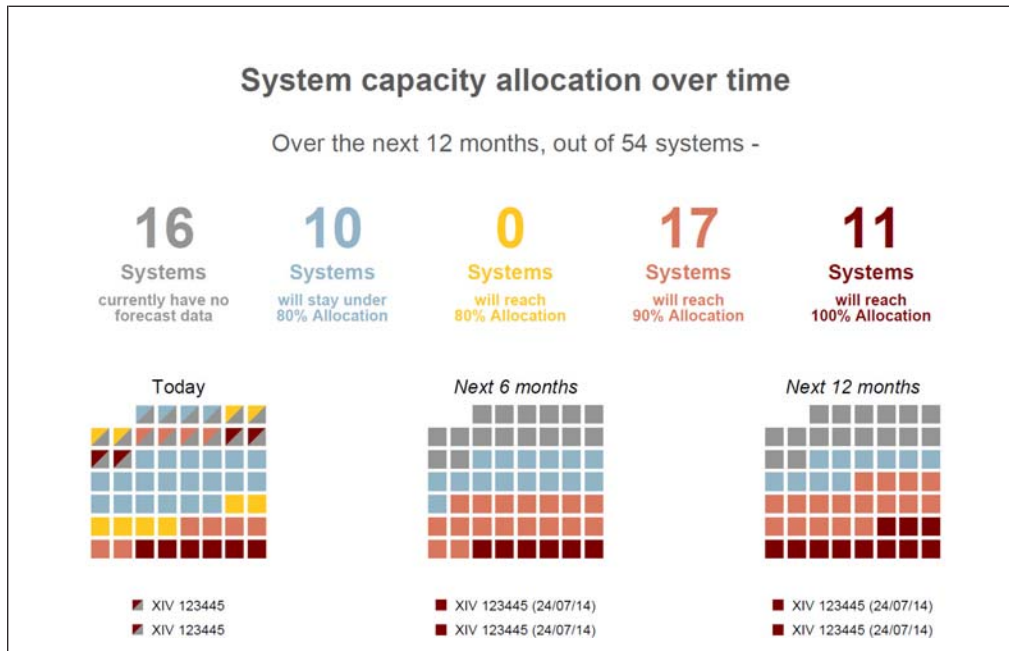


Figure 3. Capacity Planning PDF

#### RESTful API v2.0 Enhancements

RESTful API now offers quick and easy integration of XIV storage management into any cloud management system. Features include:

- Standard and popular integration mechanism in cloud environments
- Automation of standard storage management operations, such as monitoring and provisioning
- Support for multi-tenancy (the scope of commands is according to the given credentials)
- RESTful API V2.0 enhances V1.0 by adding supported objects, as well as adding actions on existing objects. V2.0 supports all of the features supported by V1.0 and extends the V1.0 functionality as follows: Consistency Group (CG)/XCG, Volume snapshot, Snap group, Mirror, and 3-way Mirror.

Refer to the *IBM Hyper-Scale Manager REST API Specifications* for more details.

#### Mobile Push Notifications

The XIV Mobile Notification Service provides real-time alerts anytime, anywhere, enabling Storage Administrators to react rapidly to potential storage issues. From the IBM® XIV® GUI, a mobile user can choose and configure the way notifications are sent to a mobile device.

- Notifications report critical issues to iOS and Android mobile devices
- One-click from notification opens the IBM XIV Mobile Dashboard view for remediation to the specific XIV and can monitor the event
- Works even when not connected to the corporate network

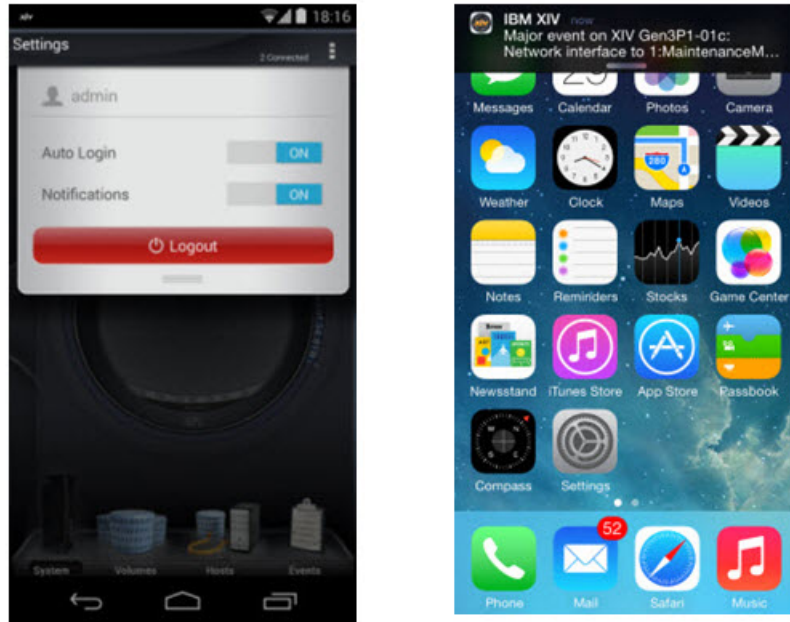


Figure 4. Mobile device settings and message bar displays

### Globalization language support

Chinese Simplified is now supported.

### Cross-system Consistency Groups

Consistency Group (CG) functionality enables consistent snapshots of several volumes at once. Snapshots of a CG require that the volumes belong to the respective CG. With Cross-system Consistency Groups (XCG), group snapshots can be created of multiple Consistency Groups (CGs) across different systems. That is, XCG snapshots can be taken of multiple CGs across multiple XIV systems, that are within the same XCG.

As of this release, all cross-system Consistency Groups functionality is available from the IBM XIV GUI and IBM Hyper-Scale Manager.

**Note:** This feature requires IBM Hyper-Scale Manager. It is not supported in direct mode.

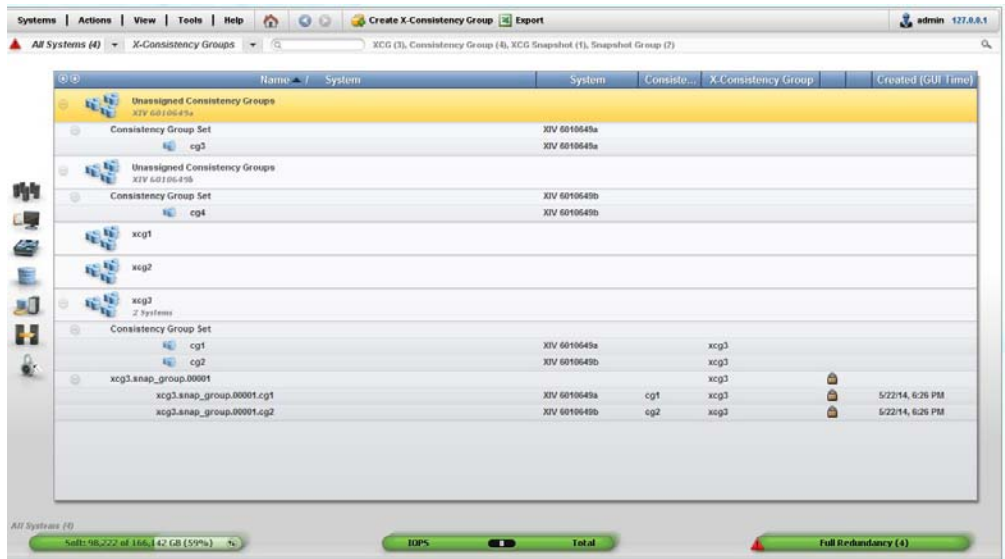


Figure 5. Cross-system Consistency Groups

### Threshold configuration per pool

Setting specific alerting thresholds can be configured for Volume and Snapshot usage on a per pool basis. To set the threshold on a specific pool, right-click on the pool and choose **Configure Pool Threshold** to display the **Threshold Configuration** window:

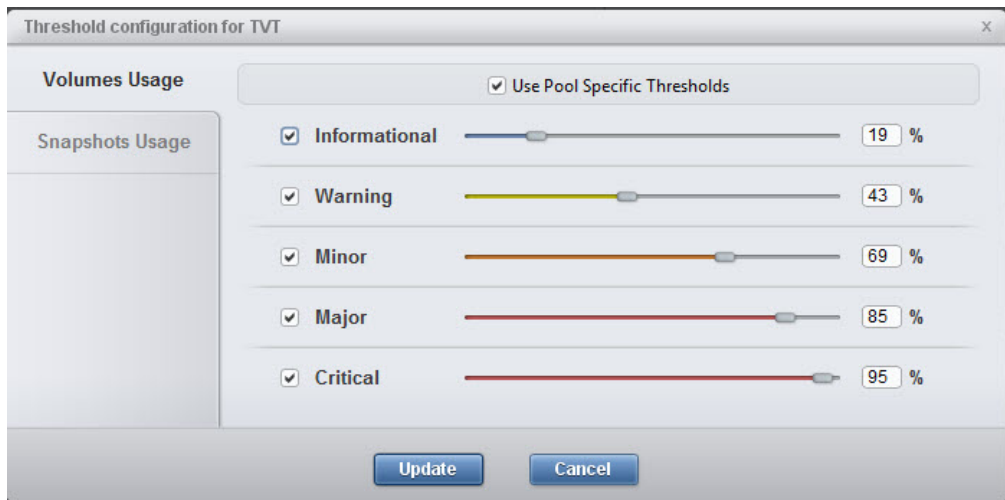


Figure 6. Threshold configuration window

### IP filtering

IP Access Groups lets storage administrators define a list of up to 20 IP addresses that can access the Management and VPN IP interfaces on an XIV system. IP Access Groups can be created, modified, and deleted from the **Manage IP Access Groups** window:

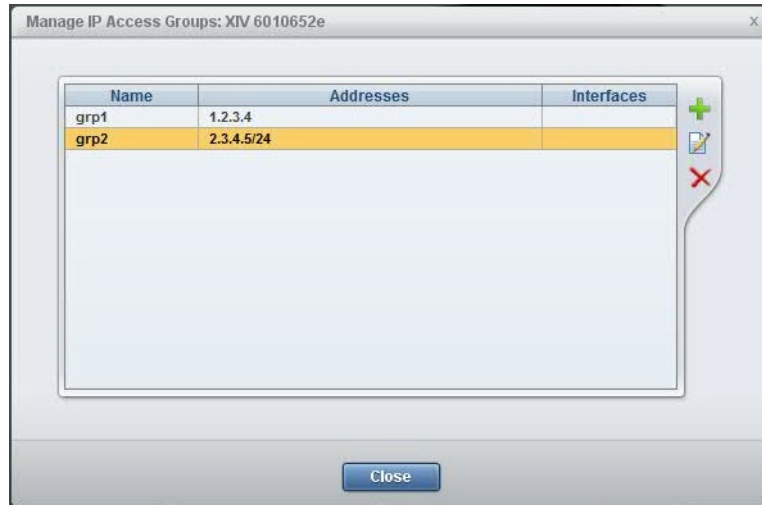


Figure 7. Manage IP Access Groups window

### SNMPv3

XIV now supports SNMPv3 from version 11.5.0, and up, and adds an ability to configure which SNMP version to use. The applicable parameters can be configured using the XIV GUI.

From the XIV GUI, choose **Systems > System settings > System**, and click on the **SNMP** tab in the window.

### QoS Per-pool performance class support

Quality of Service (QoS) by domain enables storage administrators to control the bandwidth of each domain and tenant. Quality of Service by host/pool enables domain administrators to control bandwidth to select applications, freeing up performance for key applications.

In 11.5/4.4, XIV QoS is enhanced to control bandwidth or IOPS to the new Domains, as well as Hosts and Pools.

XIV QoS enables “virtual tiers” without moving data between tiers, minimizing management efforts.

In addition to the existing GUI **QoS Performance Class**, options have been added to the right-click menu:

- Limit Host Traffic
- Limit Pool Traffic
- Limit Domain Traffic

From the XIV GUI, choose **QoS Performance Class** from the **Monitor** menu.

---

## Management Tools documentation set

The documentation for this release contains instructions for each installation type and an operations guide that is common to both.

### IBM Hyper-Scale Manager installation

#### Virtual Appliance installation

- Installation Guide for Virtual Appliance
- Quick Start Guide for Virtual Appliance

### Application installation

- Installation Guide Application
- Quick Start Guide for Application

### Management Tools

These documents are common to both installation types.

- Operations Guide
- Management Tools Release Notes

---

## Specifications

### GUI specifications

The XIV GUI runs on either Direct mode or Manager mode. Additionally, the XIV GUI installed on a 64-bit OS has different specifications than 32-bit OS.

#### Direct mode

CPU Dual core

#### Memory

##### Up to 25 systems

32-bit and 64-bit: 700MB

##### More than 25 systems

32-bit: 1.1GB

64-bit: 1.5GB

**Max number of XIV systems monitored by a single XIV GUI in direct mode is:**

144

**Best practice:** IBM XIV recommends to use the IBM Hyper-Scale Manager and an XIV GUI in Manager mode if you have more than 10 systems.

#### Server mode

CPU Dual core

#### Memory

500MB

**Allowed latency between a single XIV GUI and the IBM Hyper-Scale Manager:**

Max of 50ms

### Supported OS for XIVGUI, XCLI, XIVTOP

#### Windows

- Windows Server 2003 (32 bit)
- Windows Server 2003 (64 bit)
- Windows Server 2008 (32 bit)
- Windows Server 2008 (64 bit)
- Windows Server 2012 (64 bit)
- Windows 7 (32 bit)
- Windows 7 (64 bit)
- Windows Vista (32 bit)
- Windows Vista (64 bit)

- Windows 8 (32 bit)
- Windows 8 (64 bit)
- Windows 8.1 (32 bit)
- Windows 8.1 (64 bit)

Make sure you install the relevant package (64-bit or 32-bit) according to your OS type.

#### **Linux**

- Linux Red Hat Enterprise 5
- Linux Red Hat 6.4 (32 bit)
- Linux Red Hat 6.4 (64 bit)

**Mac** OSx 10.7

OSx 10.8

#### **Additional supported OS for XCLI only**

**AIX** AIX 6

AIX 7

**Oracle** Solaris 11 (SPARC)

Solaris 11 (INTEL)

**HPUX** HPUX 11i v3 (IA64)

## **IBM Hyper-Scale Manager specifications**

The two IBM Hyper-Scale Manager installation types require two sets of specifications. Following these sets there is a third set, for specifications that are common to both installation types.

**Note:** The installation instructions are available on the Installation Guides and Quick-Start Guides.

#### **Standalone application**

1. The installation takes place on a 64-bit RHEL 6 OS
  - For best performance, install the IBM Hyper-Scale on a server of its own.
2. Disk space:
  - At least 1 GB of free space in the /tmp directory
  - 76 GB free space under the installation path (the path is configurable, and does not have the home directory)
3. Memory and processor

##### **Up to 10 systems**

Memory - 4 GB

Processor - Dual core

##### **11-100 systems**

Memory - 6 GB

Processor - Quad core

##### **101-120 systems**

Memory - 6 GB

Processor - Six cores

**121-144 systems**

Memory - 8 GB

Processor - Six cores

**Virtual Appliance memory and CPU**

The Virtual Appliance deployment runs as a virtual application above an ESX server (VMWare Hypervisor only).

- An ESX (VMware) Server that hosts the IBM Hyper-Scale Manager, versions: 4, i4, 4.1, i4.1, i5
- VM disk size - 76 GB

This deployment comes with 4 GB memory and dual core vCPU by default. Immediately after the deployment, revise the specifications according to the number of XIV systems you will manage by the IBM Hyper-Scale Manager:

**Up to 40 systems**

Memory - 4 GB.

vCPU - Dual core.

**41-100 systems**

Memory - 6 GB.

vCPU - Quad core.

**101-120 systems**

Memory - 6 GB.

vCPU - Six cores.

**121-144 systems**

Memory - 8 GB.

vCPU - Six cores.

**Other specifications**

**Ports**

- Outbound/Inbound: RMI - 1199-1209
- Inbound only: SSH/SCP - 22
- Outbound only: SMTP - 25
  - Communication with XIV systems - 7778
  - RESTful API port - 8443

**Latency**

Allowed latency between the IBM Hyper-Scale Manager and the XIV systems it monitors: maximum of 200 ms.

**Concurrently connected GUI clients to an XIV system**

Maximum number of GUI clients connected to an XIV system that can concurrently send requests to the IBM Hyper-Scale Manager is 15.

**Administered XIV systems**

Maximum XIV Systems that are administered by one server is 144 (up to 12 groups with 12 systems each).



---

## Limitations

### UI-247041

Changing the PC local time when the GUI is open, may also change the system time.

**Workaround:**

Restart the GUI.

### UI-253185

The GUI must be installed on a dedicated directory, as the uninstallation erases it completely.

### UI-261561

An untrusted XIV system (a system that is not authenticated via a certificate) is displayed as trusted. Removing an XIV system's certificate with the `xcli -C remove` XCLI command and then trying to connect to this system succeeds. This case happens as long as the XCLI server is up.

**Workaround:**

Log out of the XCLI server and log in again.

### UI-262890

Unable to create or edit domain with size 0 through the GUI.

### UI-263821

The XIV GUI does not launch when Single Sign-On (SSO) software is running on the client.

### UI-263912

After upgrading the Hyper-Scale Manager, the time of the Schedule Daily Backup is not saved and reverts to the default value. The default value is 11:30 p.m.

### UI-264320

The XIV GUI 4.4 generates a `USER_LOGIN_HAS_SUCCEEDED` event every minute.

From release 4.4.0.1, in Direct mode, change of a user's role in LDAP is not reflected immediately in the GUI. This change is only reflected after automatic LDAP authentication, which is performed every 6 hours.

**Workaround:**

If you want to see this user role change immediately, you must re-login to the XIV GUI after the **Session Cache Period** previously defined in the LDAP configuration.

---

## XIV GUI Upgrade Notice

### UI-262093

When upgrading the XIV GUI from release 4.2 to 4.3 (or higher) on MS-Windows 8, export the systems list prior to the upgrade and import the list immediately after the upgrade.

---

## Fixed issues

### UI-261796

In certain cases, running an XCLI batch file script returns "0" (successful), when the command result actually failed.

### UI-262163

Modifications have been made for application administrator roles. In systems running 11.4.1.a and up, application administrators can list mirrors through the XIV GUI. If the **Application Administrator Capabilities** field is set to **Advanced**, application administrators can also activate or deactivate mirrors, and change/switch roles.

Choose the **Parameters** tab on the System window from the **Systems > System Settings > System** menu, and set the **Application Administrator Capabilities** field to **Advanced**.

### UI-262579

When the IBM Hyper-Scale Manager connects to an XIV system for the first time and the connection results with an *Authentication Error* message, this error message remains in the cache and is not cleared.

If SMTP notifications are enabled, a daily email is sent regarding the error, even when the problem is already resolved.

### UI-263146

In some cases, calling the XCLI from a script may cause some of the scripts to fail.

---

## Known issues

### General

#### MSM-261090

The IBM Hyper-Scale Manager can't monitor a pre-11.2.0 XIV system that is configured with LDAP, with an *xiv\_msms* user that is configured both internally and in the LDAP.

#### Workaround

1. Disable LDAP on the specific XIV system.

```
ldap_mode_set mode=inactive
```

2. Delete the *xiv\_msms* user which is defined internally.

```
user_delete user=xiv_msms
```

3. Re-enable LDAP.

```
ldap_mode_set mode=active
```

#### Severity

Moderate

### Affected versions:

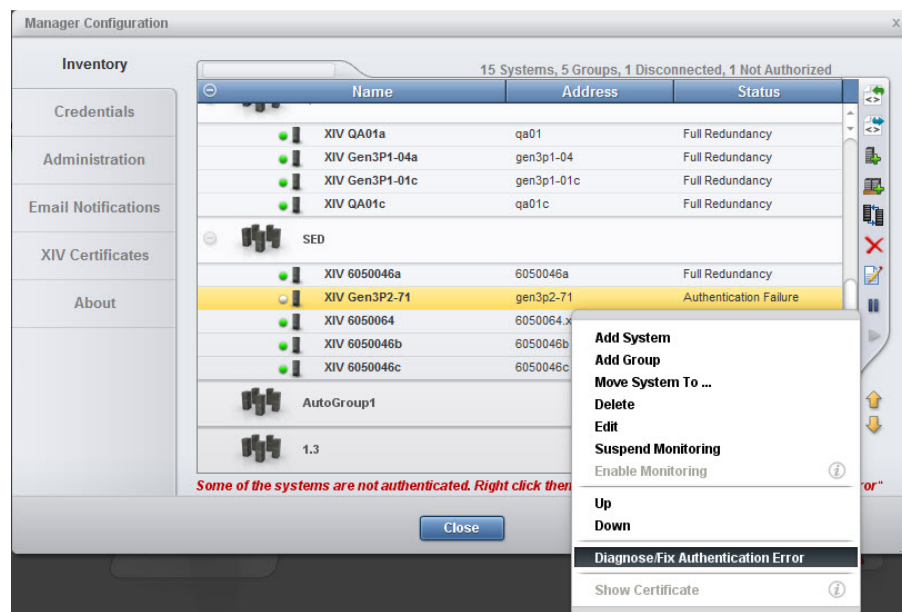
Version 1.1 and up

### MSM-261538

Disabling LDAP on an XIV system may cause an authentication failure on all of the systems that are configured to this LDAP.

#### Workaround

1. Select **Systems > Manager Configuration** from the XIV GUI menu.
2. Type the **Manager Access Code**.
3. Select the **Inventory** tab.
4. Select and right-click the systems whose status is **Authentication Failure** and click **Diagnose/Fix Authentication Error** on the menu.



### Severity

Moderate

### Affected versions:

Version 1.5

## Virtual Appliance installation

### MSM-256723

After upgrading the IBM Hyper-Scale Manager, a logged-in vSphere client (using 'root' user) does not see the updated menu and version.

#### Workaround

Select option 17) Exit on the root menu to logoff. When you log in again, the IBM Hyper-Scale Manager main menu and version are updated correctly.

### Severity

Moderate

### Affected versions:

Version 1.1 onward

## XIV GUI - Windows only

### UI-243418

The XIV GUI does not launch if the following **env** variables are defined:

- IBM\_JAVA\_OPTIONS
- JAVA\_TOOL\_OPTIONS

**Workaround:**

Delete the definition.

### UI-261999

The option to determine where an imported certificate will be stored does not work. The certificate will be stored on: "C:\Users\{UserName}\AppData\Roaming\XIV\GUI12\properties" regardless of the address that is stated by the -h parameter.

**Workaround:**

Import the certificate using the IBM Hyper-Scale Manager.

### UI-263084

When an XIVTop session is open and the session idle timeout is changed, it will only take affect the next time the XIVTop is opened.

**Workaround:**

Close and reopen a new XIVTop session.

### UI-264141

When a target is not correctly configured on the destination in a mirroring relation, and there are two identical rows for the same mirror, the cursor will jump to the first mirror when you try to select the bottom mirror.

**Workaround:**

Verify your target configuration is correct. If you have problems doing so, contact IBM Support.

### UI-264145

The XIV GUI truncates (rounding down) the Latency values in the Statistics view.

**Workaround:**

No workaround is available.

---

## Features we would like you to know of

### Multi-system configuration

Multi-system configuration is available for:

- LDAP configuration
- Support parameters
- Pool alert thresholds
- Event rules configuration
- Key server configuration (for SED enabled XIV systems)
- Adding and editing users and user groups
- Adding and editing hosts, clusters and host ports

## Connecting to the IBM Hyper-Scale Manager

The IBM Hyper-Scale Manager enhances and improves the way to manage multiple XIV systems. The GUI allows to connect to a IBM Hyper-Scale Manager using an access code.



Figure 8. Connecting to the IBM Hyper-Scale Manager

## Upgrading the IBM Hyper-Scale Manager from the GUI

The IBM Hyper-Scale Manager can be upgraded from the GUI. Whenever it is opened in Manager mode, the XIV GUI checks the version of the IBM Hyper-Scale Manager. If the version is not the latest, the user is asked to approve upgrading it.



Figure 9. Upgrading the IBM Hyper-Scale Manager from the GUI

## System Selector

The multi system component allows to easily browse for a system or search it, immediately viewing whether it is connected as well as its status.

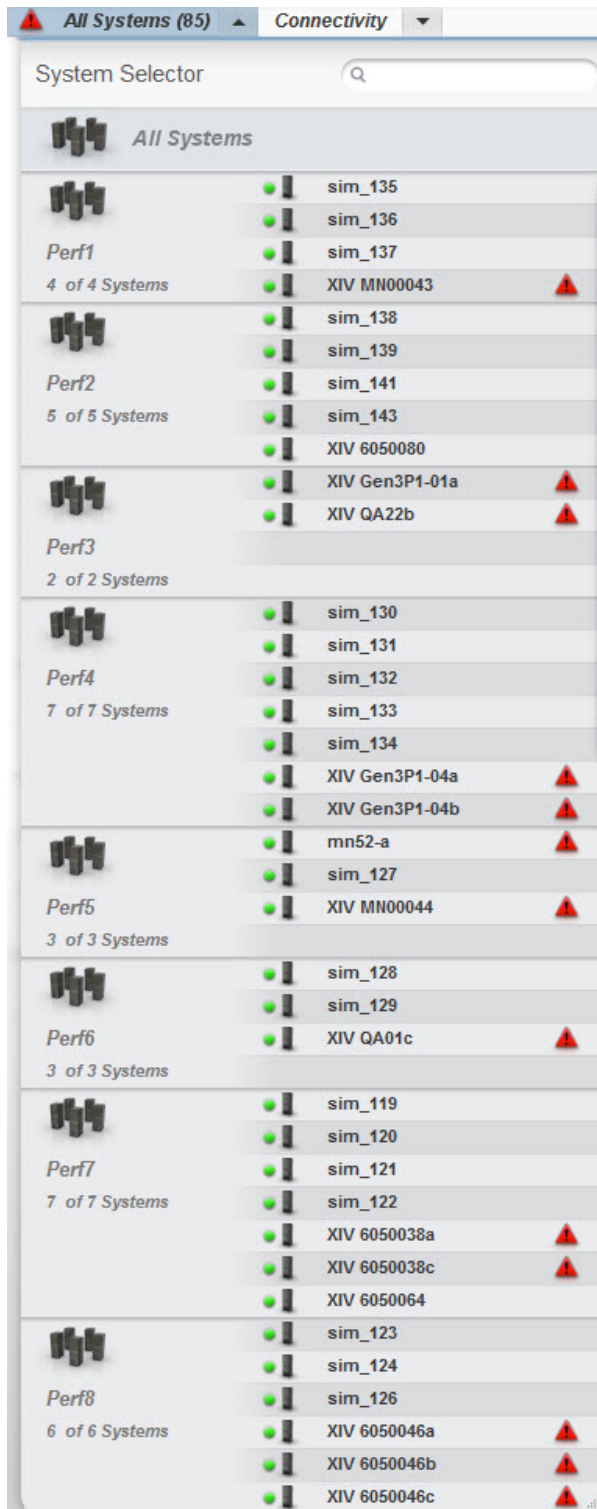


Figure 10. System selector

Enabled by using the IBM Hyper-Scale Manager, multiple system selection is also available from each view, providing the ability to select a sub-set of XIV systems to narrow any view.

## Hiding systems

The GUI allows to focus on XIV systems of interest through determining which of the systems will be seen on screen.

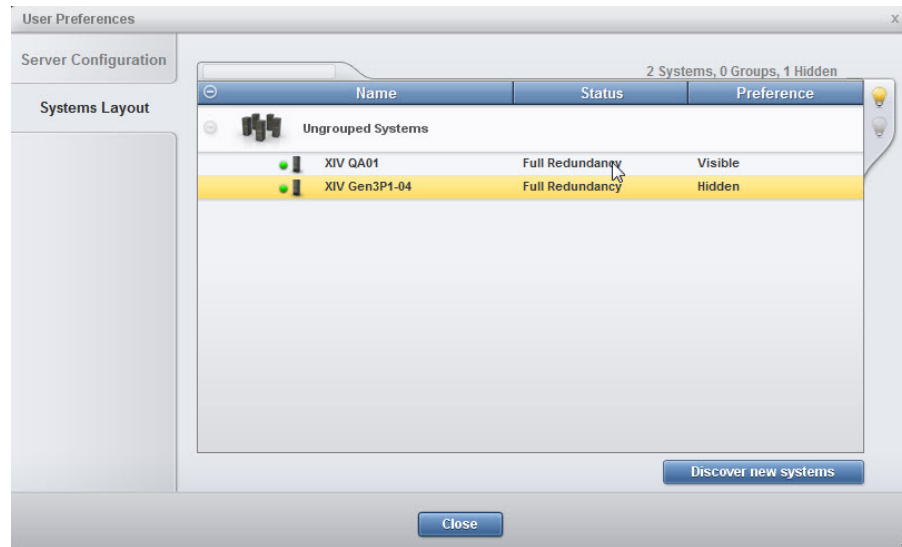


Figure 11. Hiding a system

## Tiles, List and connectivity views

The GUI allows for viewing XIV systems in multiple formats for enhanced ease of use.

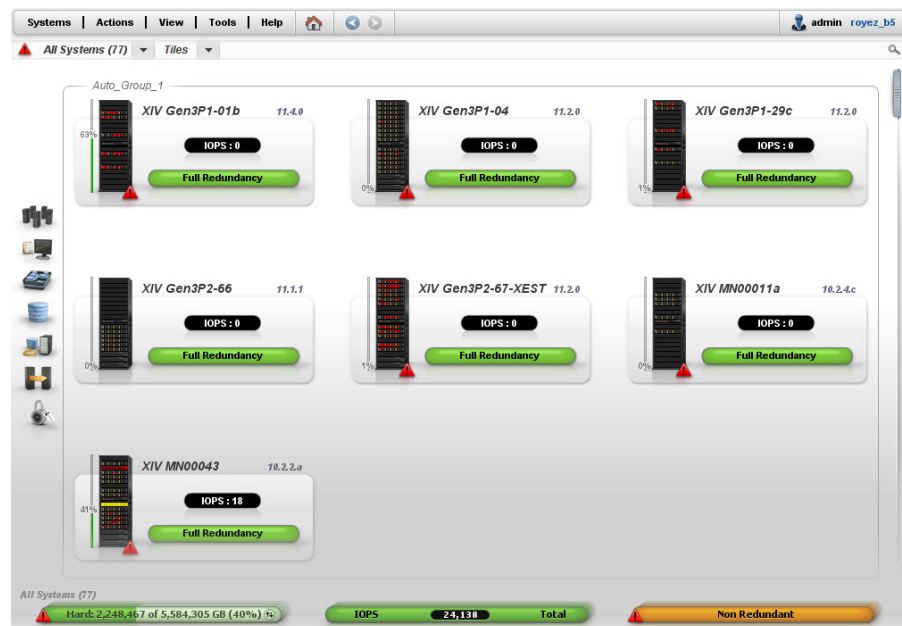


Figure 12. Tiles view

Name	Group	Status	Hard ...	Hard ...	Soft Size	Soft U...	IOPS
XIV Gen3P1-04	Auto_Group_1	Full Redundancy	120.3 TB	189 GB	120.3 TB	189 GB	13,271
XIV MN00011a	Auto_Group_1	Full Redundancy	20 TB	0 GB	20 TB	0 GB	0
XIV Gen3P1-01c	Auto_Group_1	Full Redundancy	19.3 TB	13 TB	19.3 TB	13 TB	427
XIV Gen3P2-86b	Auto_Group_10	Full Redundancy	26.2 TB	17 GB	26.2 TB	17 GB	0
XIV Gen3P1-10	Auto_Group_10	Full Redundancy	241 TB	240.9 ...	241 TB	240.9 ...	0
XIV Gen3P3-131	Auto_Group_10	Full Redundancy	135.5 TB	44.8 TB	135.5 TB	44.8 TB	87,552
XIV Gen3G-06	Auto_Group_10	Full Redundancy	152.2 TB	0 GB	152.2 TB	0 GB	0
XIV Gen3P2-56 - Offline for 59 seconds	Auto_Group_10	Communication Loss	71.8 TB	59.1 TB	414.5 TB	59.1 TB	0
XIV Gen3P1-19a	Auto_Group_11	Full Redundancy	27.2 TB	1.6 TB	27.2 TB	1.6 TB	17
XIV hostdev32a	Auto_Group_11	Full Redundancy	15.4 TB	15.4 TB	15.4 TB	15.4 TB	469
XIV Gen3P1-11b	Auto_Group_11	Full Redundancy	15.4 TB	2.6 TB	15.4 TB	2.6 TB	23
XIV Gen3P1-11c	Auto_Group_11	Full Redundancy	15.4 TB	34 GB	15.4 TB	34 GB	0
XIV Gen3P2-72a	Auto_Group_11	Full Redundancy	19.4 TB	86 GB	19.4 TB	86 GB	0
XIV MN00052	Auto_Group_11	Full Redundancy	78.7 TB	60.2 TB	78.7 TB	60.2 TB	7
XIV nas7a	Auto_Group_11	Full Redundancy	55.7 TB	0 GB	55.7 TB	0 GB	0
XIV QA01	Auto_Group_11	Full Redundancy	77.6 TB	69 TB	77.6 TB	69 TB	0
XIV Gen3P2-36b	Auto_Group_2	Full Redundancy	11.5 TB	1 TB	11.5 TB	1 TB	0
XIV Gen3p2-95	Auto_Group_2	Full Redundancy	317.5 TB	317.5 ...	317.5 TB	317.5 ...	0
XIV Gen3P2-54a	Auto_Group_2	Full Redundancy	1.8 TB	17 GB	1.8 TB	17 GB	0
XIV MN00007	Auto_Group_3 -	Maintenance	66.2 TB	11 TB	66.2 TB	11 TB	0
XIV Gen3P1-22c	Auto_Group_3 -	Full Redundancy	28.2 TB	69 GB	28.2 TB	69 GB	0
XIV 6030108	Auto_Group_3 -	Full Redundancy	161.3 TB	0 GB	161.3 TB	0 GB	0
XIV Gen3P2-48	Auto_Group_4	Full Redundancy	159 TB	0 GB	159 TB	0 GB	0
XIV Gen3P2-51	Auto_Group_4	Full Redundancy	161.3 TB	104.8 ...	161.3 TB	104.8 ...	78
XIV mn00010	Auto_Group_4	Maintenance	54.6 TB	5.4 TB	54.6 TB	5.4 TB	0

Figure 13. List view

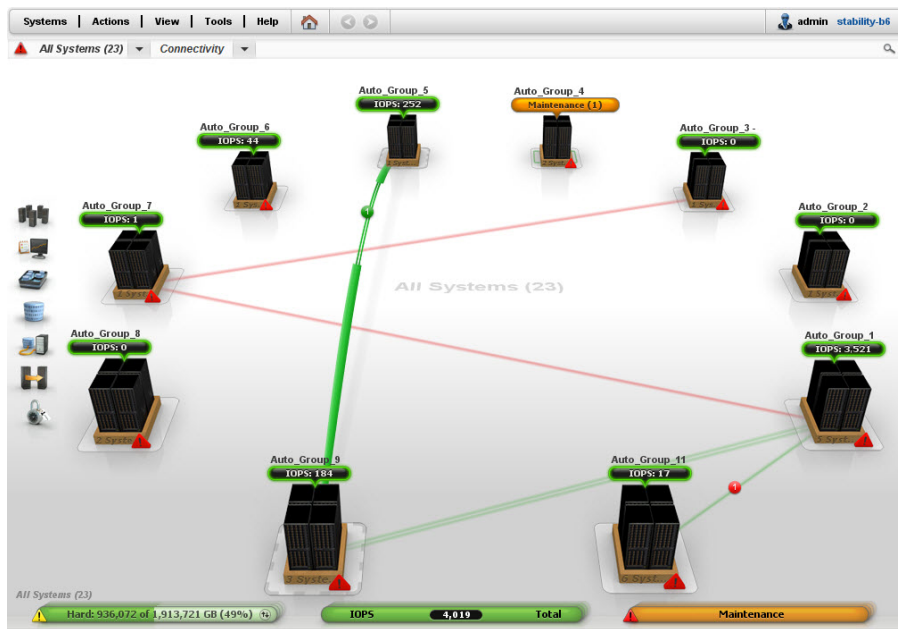


Figure 14. Connectivity view

## Consolidated views

Enabled by using the IBM Hyper-Scale Manager, every GUI view displays objects from a multiple number systems, depending on the systems selection, providing the ability to sort and filter from the entire XIV systems in the organization.



Name / System	Usage	Snapshots (GB)	Lock Beha...
TLIB_AUTO_POOL XIV MN00001	206 GB Used Volumes 1.1 TB Volumes allocated 1.5 TB Hard+ 1.5 TB Soft+	Snapshots reserved 377 GB+	Read only
ramir_pool XIV Gen3P1-1B-Dev	1.8 TB Used Volumes 2.9 TB Volumes allocated 30 TB Hard+ 30 TB Soft+	Snapshots reserved 1 TB+	Read only
Jira-Verification-Pool XIV Gen3P2-64a	17 GB Used Volumes 103 GB Volumes allocated 3 TB Hard+ 3 TB Soft+	Snapshots reserved 309 GB+	Read only
Eiliran_Pool XIV Gen3P2-64a	24.4 TB Hard+ 103 GB Volumes allocated 24.4 TB Soft+	Snapshots reserved 2.4 TB+	Read only
XIV-37 XIV Gen3P2-55	42 TB Hard+ 9 TB Volumes allocated 42 TB Soft+	Snapshots reserved 4.2 TB+	Read only
XIV-65 XIV Gen3P2-55	42.1 TB Hard+ 4.2 TB Volumes allocated 42.1 TB Soft+	Snapshots reserved 4.2 TB+	Read only
TLIB_AUTO_POOL XIV MN00007	11 TB Hard+ 11 TB Volumes allocated of 11 TB Soft (100%)	Snapshots reserved 0 GB+	Read only
pool-1203107-0004 XIV mn00010	2.7 TB Hard+ 1.1 TB Volumes allocated 1.1 TB 2.7 TB Soft+	Snapshots reserved 1.1 TB+	Read only

Figure 15. Viewing multiple storage pools with multiple systems

## Switching between systems in any view

You may switch between systems using *ALT+S*.

## Multi-system configuration

The GUI allows to copy system configuration from one system and paste it onto multiple XIV systems.

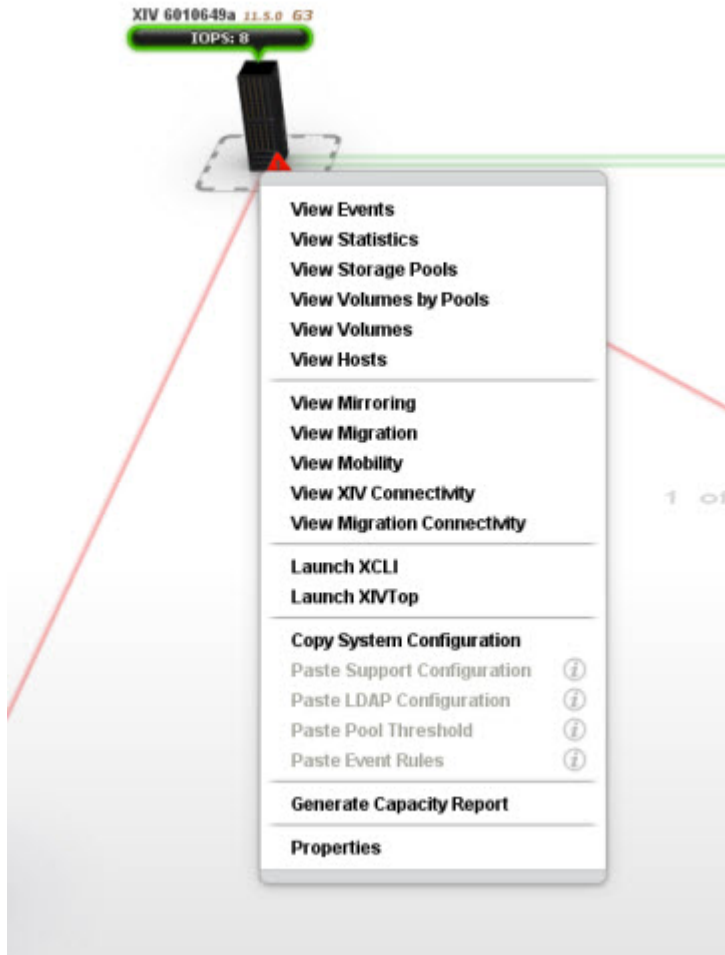


Figure 16. Copy System Configuration

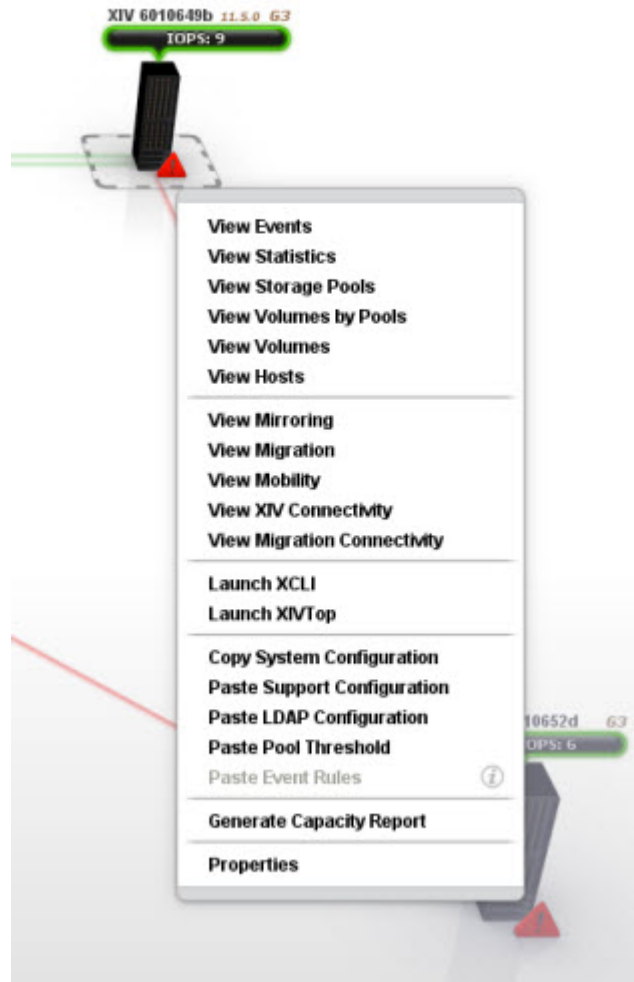


Figure 17. Paste Support Configuration

## Multi-system users management

### Adding a user on multiple systems

The Add User screen allows for user management operations on some or all the systems that are managed by the IBM Hyper-Scale Manager.

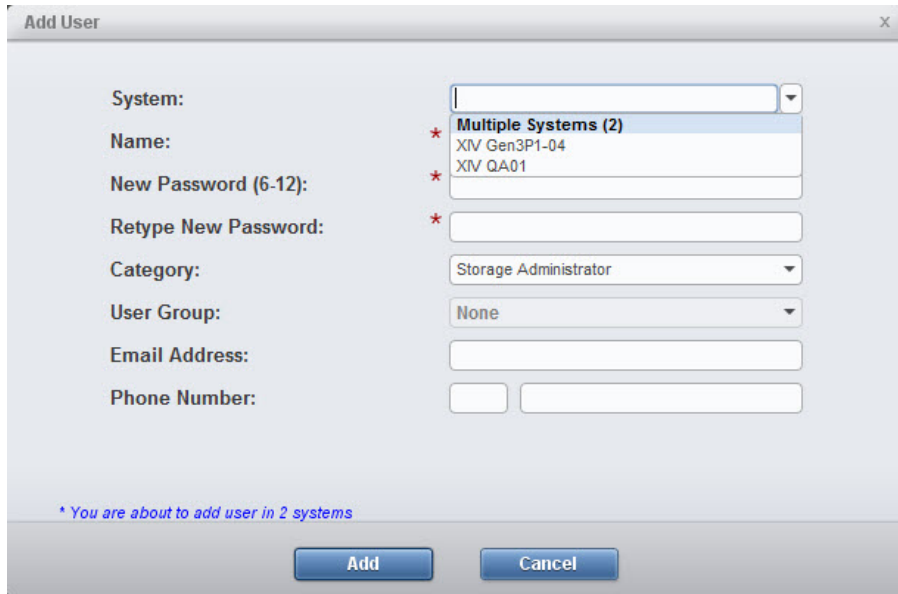


Figure 18. Adding a user to multiple systems

Furthermore, we can select which of the XIV systems we add the user to. Then, the GUI notifies us on the systems the user was added to.

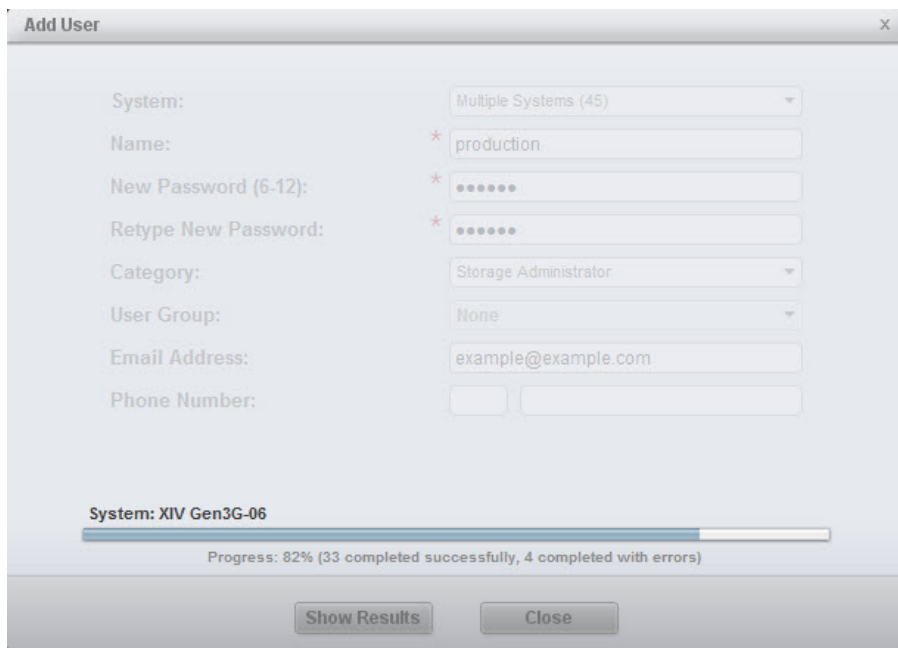


Figure 19. Adding a user to multiple systems

### Editing a user on multiple systems at once

Enabled by using the IBM Hyper-Scale Manager, the **Users** screen allows for editing a user across multiple XIV systems at once.

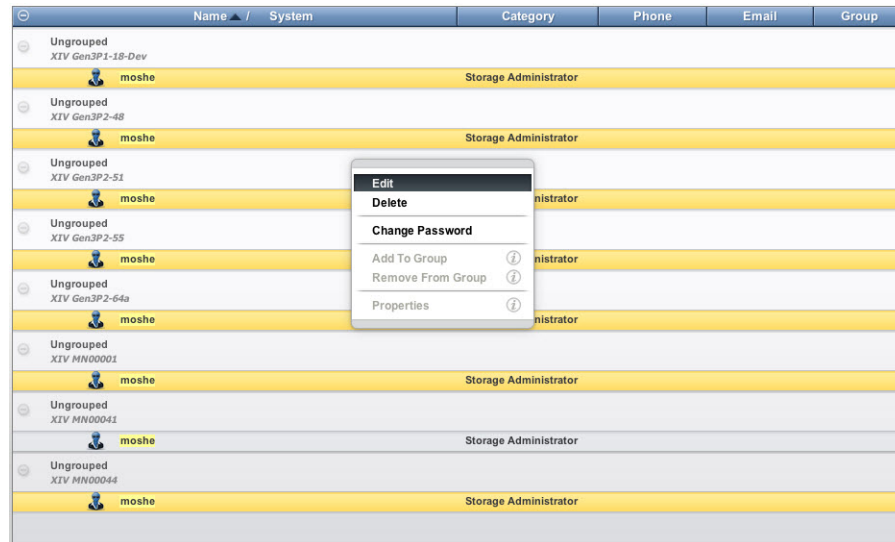


Figure 20. Editing a user on multiple systems

## GUI tips

### Recognizing self-encrypting disks

The GUI is now recognizing self-encrypting disks installed on the storage system. The machine name is marked with *SED*.

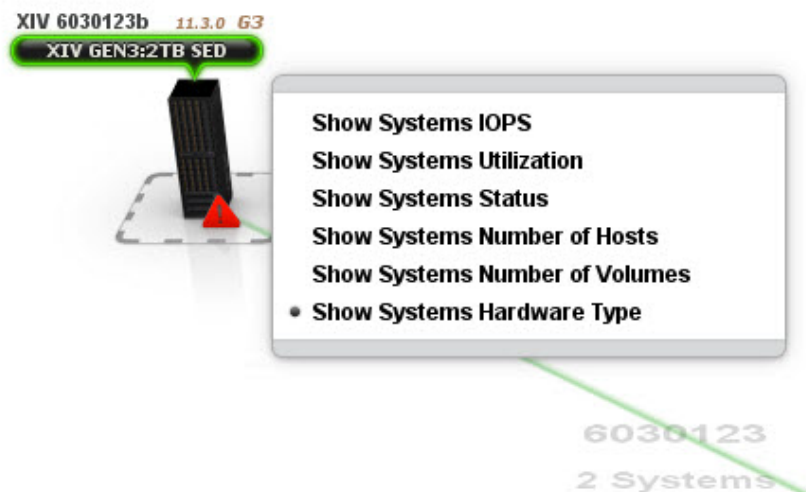


Figure 21. Recognizing self-encrypting disks

### Tooltips for dialog fields

On some of the dialog property names there are tooltips to better explain them. In the following example, there is a tooltip explaining what a destination system is when hovering it with the mouse.

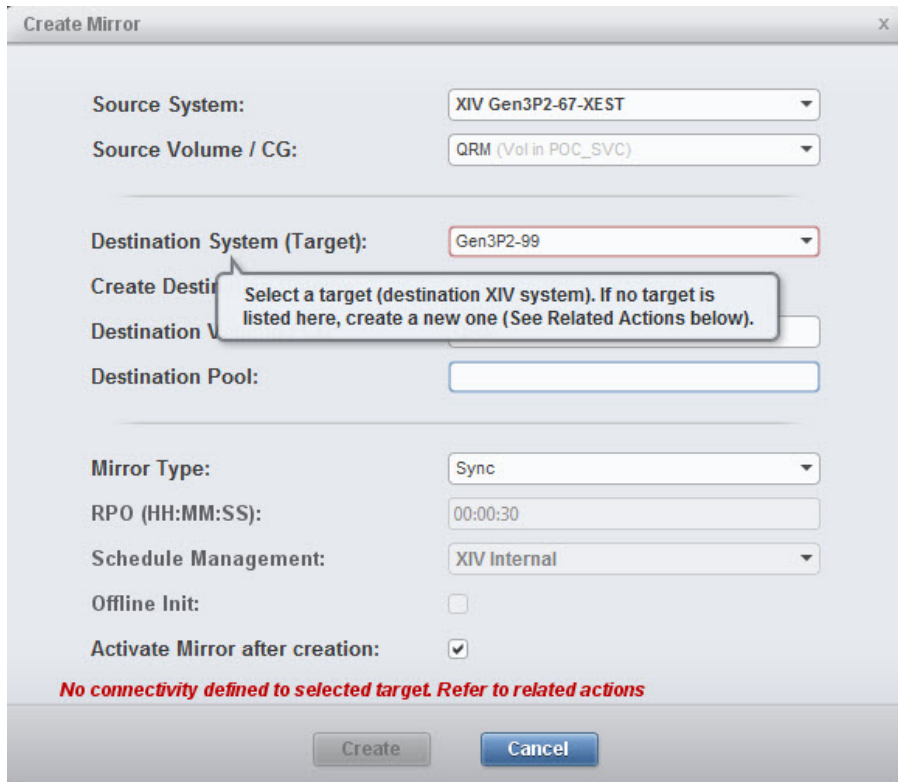


Figure 22. Tooltip explanation

## Regional Settings support

For enhanced ease of use, the GUI allow to determine its regional setting.



Figure 23. Regional Settings support

## Search (Ctrl+F)

The GUI allows for a textual search of just about everything.

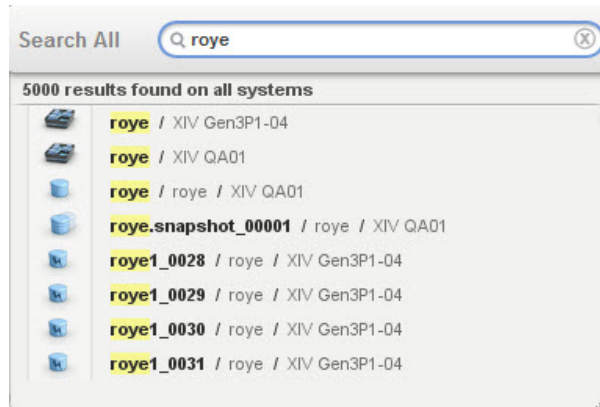


Figure 24. Searching for objects

## Disabled items tooltip

For every disabled option on the GUI, a tooltip explains the logic behind it. For example, the *Remove from consistency group* is disabled for a volume that is not part of any consistency group.

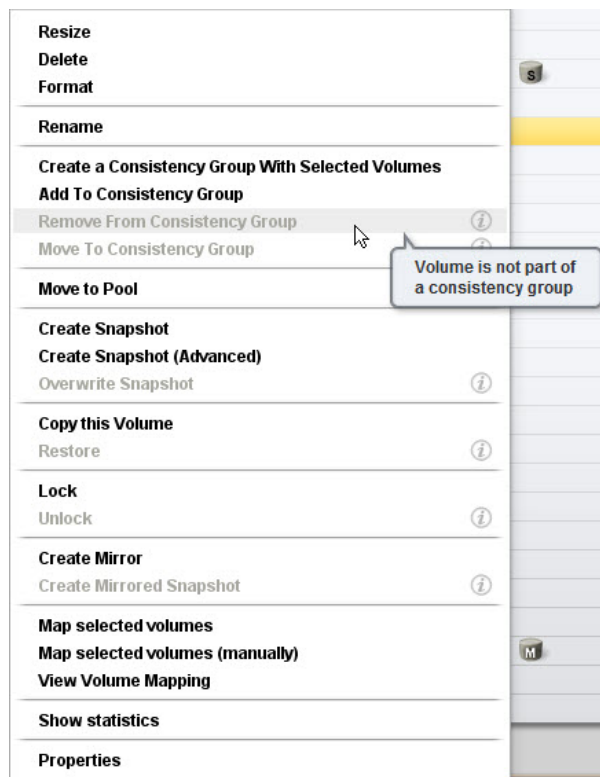


Figure 25. Disabled items tooltip

## Actions menu

The Actions menu provides an easy to access way to perform operations on any object on any of the XIV systems that are managed by the GUI, in any context.



Figure 26. The actions menu

## System view

The System View provide a quick access to all of the system's hardware. Clicking any of the system's components will open it on screen. Clicking the arrow to the right of the system will reveal its patch panel.



Figure 27. The system view

## System balloons

The system balloons in the Connectivity view provide a quick access to the system's state key indicators.



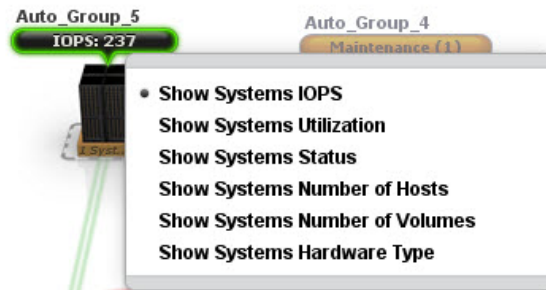


Figure 28. System balloons

## Export to CSV

In addition to the previously supported events and statistics frames, the GUI now supports exporting to CSV for all GUI tabular views. The new **Export** icon is available for all these views.



Figure 29. Export to CSV

## Statistics

### SSD hit in statistics

The Statistics screen displays both RAM and SSD cache hits for the relevant systems.

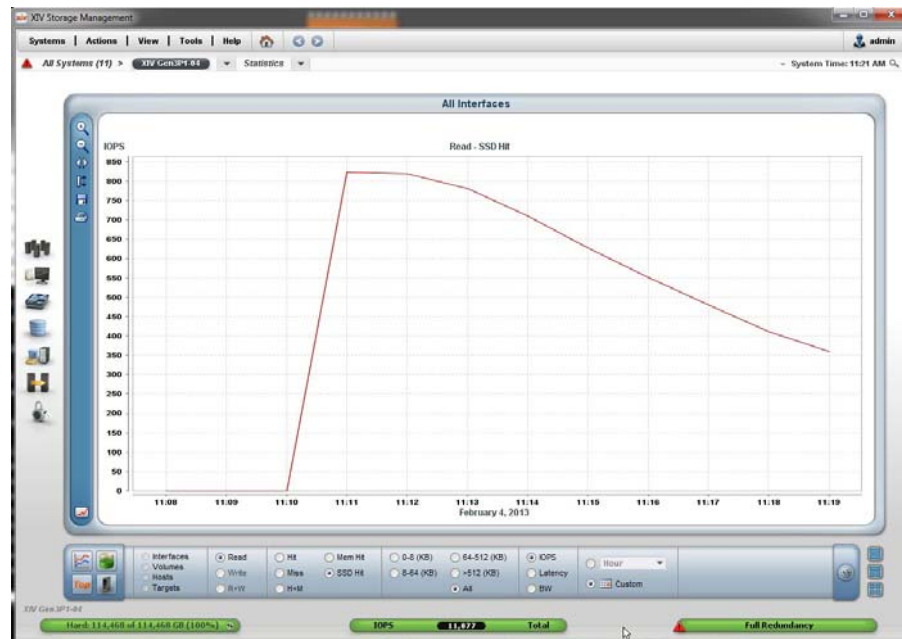


Figure 30. Viewing SSD activity

## Capacity consumption trending

Capacity history at a glance.

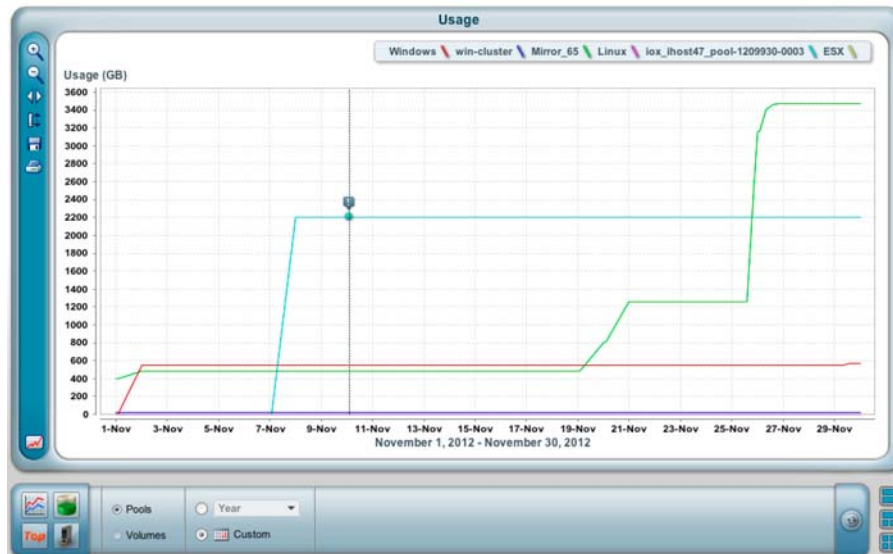


Figure 31. Capacity consumption trending

## IBM Hyper-Scale Mobility, Mirroring and Data Migration

### IBM Hyper-Scale Mobility

The GUI simplifies the IBM Hyper-Scale Mobility task. The source and target volumes are displayed on screen, as well as the Mobility progress, providing the following views and controllers:

#### The Create IBM Hyper-Scale Mobility screen

This screen allows to create an IBM Hyper-Scale Mobility by providing the required information: source and destination systems, source volume and destination pool.

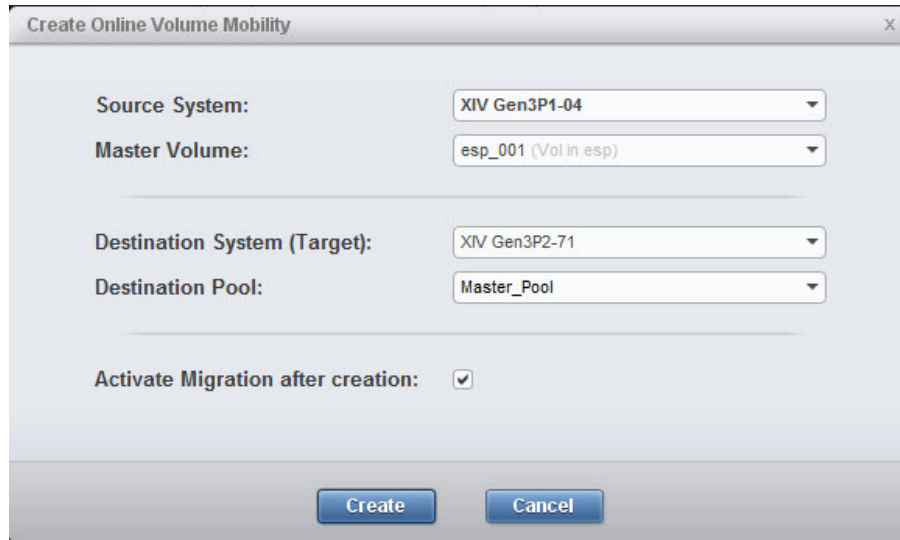


Figure 32. The Create IBM Hyper-Scale Mobility screen

**All IBM Hyper-Scale Mobility commands are easily accessible**

Following the creation of the IBM Hyper-Scale Mobility relation, all of the relevant commands (activating the Mobility or aborting it, etc.) are available through right-clicking the either of the source or destination volumes under the IBM Hyper-Scale Mobility view that shows all IBM Hyper-Scale Mobility activities and their states.



Figure 33. All IBM Hyper-Scale Mobility commands are easily accessible

**Viewing the IBM Hyper-Scale Mobility phase and status at a glance**

IBM Hyper-Scale Mobility statuses are color coded:

Name	System	Phase	State	Remote System
MS2	XIV Gen3P1-04	Proxy	Proxy-Destination	XIV Gen3P2-71

Figure 34. Viewing the phase and status at a glance

**Name** The name of the volume in the IBM Hyper-Scale Mobility relation, either source or destination.

**Phase of the IBM Hyper-Scale Mobility**  
Migration, Proxy-Ready or Proxy.

**Operational Status**  
Link is up or Link is disrupted.

**State**

- On the source: Initializing, Synchronized, Unsynchronized or Proxy.
- On the destination: Consistent, Inconsistent or Proxied.

## IBM Hyper-Scale Manager Upgrade from the GUI

The IBM Hyper-Scale Manager can be upgraded from the GUI. Whenever you upgrade the GUI and launch it for the first time, you will be asked to upgrade the IBM Hyper-Scale Manager as well.

### Manager configuration

In order to manage the IBM Hyper-Scale Manager configuration from the GUI, go to **Systems > Manager Configuration**. There you can change the Manager Access Code and the System Machine Account (see related chapters on the user guide, available on the IBM XIV Information Center <http://publib.boulder.ibm.com/infocenter/ibmxiv/r2/index.jsp>).

### Lightweight, fast installation

Minimal number of steps from the Installer, rest of the steps from the GUI. A detailed description of the installation process can be found in the user guide.

```
-----  
----- IBM Hyper-Scale Manager v1.x.x.x -----  
-----
```

Welcome to the IBM Hyper-Scale Manager installation procedure.

This setup will guide you through the installation process.

Required Steps

-----

Step 1: License Agreement  
Step 2: Password Change  
Step 3: Networking  
Step 4: NTP & Regional Settings  
Step 5: SMTP

Proceed? [Y/N] >

### Central inventory for all GUI users

The IBM Hyper-Scale Manager provides a central inventory for all GUI users with a smart permissions engine.

```

Manager Inventory Configuration
-----
IBM Hyper-Scale Manager is running

```

- 1) System Inventory List
  - 2) Add System
  - 3) Modify System
  - 4) Remove System
  - 5) System Monitoring Suspend
  - 6) System Monitoring Resume
  - 7) Re-authenticate All Users
  - 8) Change System Machine Account
  - 9) Manage System Certificates
  - 10) Exit
- Your Selection>1

```

-----
Name           Addresses           Status           Id
-----
Gen3P3-127     Gen3P3-127,,        Invalid configuration Gen3P3-127::null:null
Gen3p2-95      Gen3p2-95,,         Full Redundancy   Gen3p2-95::null:null
Gen3P2-93c     Gen3P2-93c,,        Full Redundancy   Gen3P2-93c::null:null
XIV Gen3p2-99 Gen3p2-99b,,        Full Redundancy   XIV Gen3p2-99:1310099:2810:114
Gen3P2-38c     Gen3P2-38c,,        Authentication Failure Gen3P2-38c::null:null
XIV Gen3P3-132 Gen3P3-132b,,       Full Redundancy   XIV Gen3P3-132:1310132:2810:214
XIV Gen3P2-69 Gen3P2-69,,         Full Redundancy   XIV Gen3P2-69:1310069:2810:114
Gen3G-07a     Gen3G-07a,,         Redistributing    Gen3G-07a::null:null
XIV MN00011c  MN00011c,,          Connection Error   XIV MN00011c:MN00011:2810:A14
XIV MN00041   MN00041,,           Full Redundancy   XIV MN00041:MN00041:2810:A14
Gen3P2-66     Gen3P2-66,,         Communication Loss Gen3P2-66::null:null
Gen3G-09      Gen3G-09,,          Loading...         Gen3G-09::null:null
Gen3P3-131    Gen3P3-131,,        Full Redundancy   Gen3P3-131::null:null
XIV Gen3P2-83 Gen3P2-83,,         Full Redundancy   XIV Gen3P2-83:1310083:2810:214

```

---

## Copyrights

© Copyright IBM Corporation 2014. US Government Users Restricted Rights - Use, duplication or disclosure restricted by GSA ADP Schedule Contract with IBM Corp.

References in this documentation to IBM products, programs, or services do not imply that IBM intends to make these available in all countries in which IBM operates. Any reference to an IBM product, program or service is not intended to state or imply that only IBM's product, program or service may be used. Any functionally equivalent product, program or service that does not infringe any of IBM's intellectual property rights may be used instead of the IBM product, program or service. Evaluation and verification of operation in conjunction with other products, except those expressly designated by IBM, are the user's responsibility.

---

## Contacting IBM Support

The release is supported via:

### Voice calls

Will come into Level 1 or Front Line Support as they do for the current product.

Customers will use the appropriate support phone number for their respective countries; refer to the World Wide Directory for the support numbers by country. <http://www.ibm.com/planetwide>

---

## Documentation format

The publications for this product are in Adobe Portable Document Format (PDF) and should be compliant with accessibility standards.

If you experience difficulties when you use the PDF files and want to request a web-based format or accessible PDF document for a publications, send a request by email to [starpubs@us.ibm.com](mailto:starpubs@us.ibm.com). In the request, be sure to include the IBM publication number and title.

When you sent information to IBM, you grant IBM a nonexclusive right to use to distribute the information in any way it believes appropriate without incurring any obligation to you.

---

## Notices and trademarks

### Notices

INTERNATIONAL BUSINESS MACHINES CORPORATION PROVIDES THIS PUBLICATION "AS IS" WITHOUT WARRANTY OF ANY KIND, EITHER EXPRESS OR IMPLIED, INCLUDING, BUT NOT LIMITED TO, THE IMPLIED WARRANTIES OF NON-INFRINGEMENT, MERCHANTABILITY OR FITNESS FOR A PARTICULAR PURPOSE. Some jurisdictions do not allow disclaimer of express or implied warranties in certain transactions, therefore, this statement may not apply to you. This information could include technical inaccuracies or typographical errors. Changes are periodically made to the information herein; these changes will be incorporated in new editions of the publication. IBM may make improvements and/or changes in the product(s) and/or the program(s) described in this publication at any time without notice.

### Trademarks

Linux is a trademark of Linus Torvalds in the United States, other countries, or both. Microsoft, Windows, and Windows Server are trademarks of Microsoft Corporation in the United States, other countries, or both. Intel, Intel logo, Intel Inside, Intel Inside logo, Intel Centrino, Intel Centrino logo, Celeron, Intel Xeon, Intel SpeedStep, Itanium, and Pentium are trademarks or registered trademarks of Intel Corporation or its subsidiaries in the United States and other countries. Other company, product, or service names may be trademarks or service marks of others.

### **THIRD-PARTY LICENSE TERMS AND CONDITIONS, NOTICES AND INFORMATION**

The license agreement for this product refers you to this file for details concerning terms and conditions applicable to third party software code included in this product, and for certain notices and other information IBM must provide to you under its license to certain software code. The relevant terms and conditions, notices and other information are provided or referenced below. Please note that any non-English version of the licenses below is unofficial and is provided to you for your convenience only. The English version of the licenses below, provided as part of the English version of this file, is the official version. Notwithstanding the terms and conditions of any other agreement you may have with IBM or any of its related or affiliated entities (collectively "IBM"), the third party software code identified below are "Excluded Components" and are subject to the following terms and conditions:

- the Excluded Components are provided on an "AS IS" basis

- IBM DISCLAIMS ANY AND ALL EXPRESS AND IMPLIED WARRANTIES AND CONDITIONS WITH RESPECT TO THE EXCLUDED COMPONENTS, INCLUDING, BUT NOT LIMITED TO, THE WARRANTY OF NON-INFRINGEMENT OR INTERFERENCE AND THE IMPLIED WARRANTIES AND CONDITIONS OF MERCHANTABILITY AND FITNESS FOR A PARTICULAR PURPOSE
- IBM will not be liable to you or indemnify you for any claims related to the Excluded Components
- IBM will not be liable for any direct, indirect, incidental, special, exemplary, punitive or consequential damages with respect to the Excluded Components.





---

## Index

### A

- Actions menu 23
- Adding a user on multiple systems 14

### C

- Capacity consumption trending 27
- Connecting to the IBM Hyper-Scale Manager 14

### D

- Data Migration 28
- Disabled items tooltip 23
- Displaying disk temperature 23

### E

- Editing a user on multiple systems at once 14
- Explanation about disk health colors 23
- Export to CSV 23

### G

- GUI 8

### H

- Hiding systems 14

### I

- IBM Hyper-Scale Mobility 28

### M

- Mirroring 28
- Multi-System configuration 14
- Multi-System views 14

### P

- prerequisites 8

### R

- Regional Settings support 23

### S

- Search (Ctrl+F) 23
- Simplifying the IBM Hyper-Scale Manager manageability from the GUI 14
- specifications 8

- SSD hit in statistics 27
- Switching between systems in any view 14
- System balloons 23
- System Selector 14
- System view 23

### T

- Tiles, List and connectivity views 14

### W

- What's new for version 4.4
  - Capacity planning - PDF report 1
  - Configurable idle timeout 1
  - Cross-system Consistency Groups 1
  - IP filtering 1
  - Mobile Push Notifications 1
  - Multi-site mirroring 1
  - Multi-tenancy 1
  - Quality of Service (QoS) 1
  - RESTful API v2.0 Enhancements 1
  - Threshold configuration per pool 1



---

## Readers' Comments — We'd Like to Hear from You

IBM XIV Storage System Management Tools  
Version 4.4.0.1  
Release Notes

We appreciate your comments about this publication. Please comment on specific errors or omissions, accuracy, organization, subject matter, or completeness of this book. The comments you send should pertain to only the information in this manual or product and the way in which the information is presented.

For technical questions and information about products and prices, please contact your IBM branch office, your IBM business partner, or your authorized remarketer.

When you send comments to IBM, you grant IBM a nonexclusive right to use or distribute your comments in any way it believes appropriate without incurring any obligation to you. IBM or any other organizations will only use the personal information that you supply to contact you about the issues that you state on this form.

Comments:

Thank you for your support.

Send your comments to the address on the reverse side of this form.

If you would like a response from IBM, please fill in the following information:

\_\_\_\_\_  
Name

\_\_\_\_\_  
Address

\_\_\_\_\_  
Company or Organization

\_\_\_\_\_  
Phone No.

\_\_\_\_\_  
Email address

# Readers' Comments — We'd Like to Hear from You



Cut or Fold  
Along Line

Fold and Tape

**Please do not staple**

Fold and Tape

PLACE  
POSTAGE  
STAMP  
HERE

International  
Business Machines

Fold and Tape

**Please do not staple**

Fold and Tape

Cut or Fold  
Along Line





Printed in USA